

Kincardine – from Charrette to Action

International Making Place Conference, Glasgow

10th June 2019



go forth!
Kincardine



Forgotten to First

Before the Charrette

- A community optimistic about the potential for change and improvement
- Despite the perception that the local authority had forgotten about them, it is peripheral to the Council's thinking
- Explore how a new positive mindset changed the community outlook to be 'First in Fife'...

'Kincardine is a
forgotten village'

The Charrette

June 2017

- Well advertised
- Focused sessions
- Structured flowing process with clear objectives
- An engaged client...

Events, discussions and
focused on the future of
Come along and tell us how
this village can be improved

7th - 11th June 2017
Kincardine Community Centre,
Kincardine, FK10 4SF

Wednesday 7th June

- 10am GoForthKincardine launch & Primary School presentations
- 11.45am 'Walkabout' - join us for walking conversations around Kincardine
- 1.15pm Lunch
- 2 - 5pm 'Walkabout' - focused workshops in the community centre
- 6 - 8pm 'Pecha Kucha' event - rapid fire ideas and conversation

Thursday 8th June

- 10am Community visions & goals workshop
- 12pm Themed workshop: Heritage & identity
- 1pm Lunch
- 2 - 4pm Themed technical workshops:
 - Connectivity
 - Retail & enterprise
 - Nature & recreation
- 4pm Presentations & discussion
- 6 - 8pm Can't make daytime events?
Try this evening community workshop

Friday 9th June

- 1 - 3pm Drop-in session

Sunday 11th June

- 11.30am - 3pm Exhibition of work
- 2pm Presentation

Client

Coalfields Regeneration Trust

- Dedicated to supporting the UKs former coal mining communities.
- Making an Impact, a track record of delivering targeted programmes that have helped thousands of people secure a job, increase their skills and take part in activities that have improved their health.
- The Trust in Scotland is predominately funded by the Scottish Government.
- The Scottish base is in Kincardine on Kirk Street in the heart of the village.



the coalfields
regeneration trust

The Charrette

June 2017

- Well advertised
- Focused sessions
- Structured flowing process with clear objectives
- An engaged client
- An exceptional team...

Events, discussions and
focused on the future of
Come along and tell us how
this village can be improved

7th - 11th June 2017
Kincardine Community Centre,
Kincardine, FK10 4SF

Wednesday 7th June

- 10am GoForthKincardine launch & Primary School presentations
- 11.45am 'Walkabout' - join us for walking conversations around Kincardine
- 1.15pm Lunch
- 2 - 5pm 'Walkabout' - focused workshops in the community centre
- 6 - 8pm 'Pecha Kucha' event - rapid fire ideas and conversation

Thursday 8th June

- 10am Community visions & goals workshop
- 12pm Themed workshop: Heritage & identity
- 1pm Lunch
- 2 - 4pm Themed technical workshops:
 - Connectivity
 - Retail & enterprise
 - Nature & recreation
- 4pm Presentations & discussion
- 6 - 8pm Can't make daytime events?
Try this evening community workshop

Friday 9th June

- 1 - 3pm Drop-in session

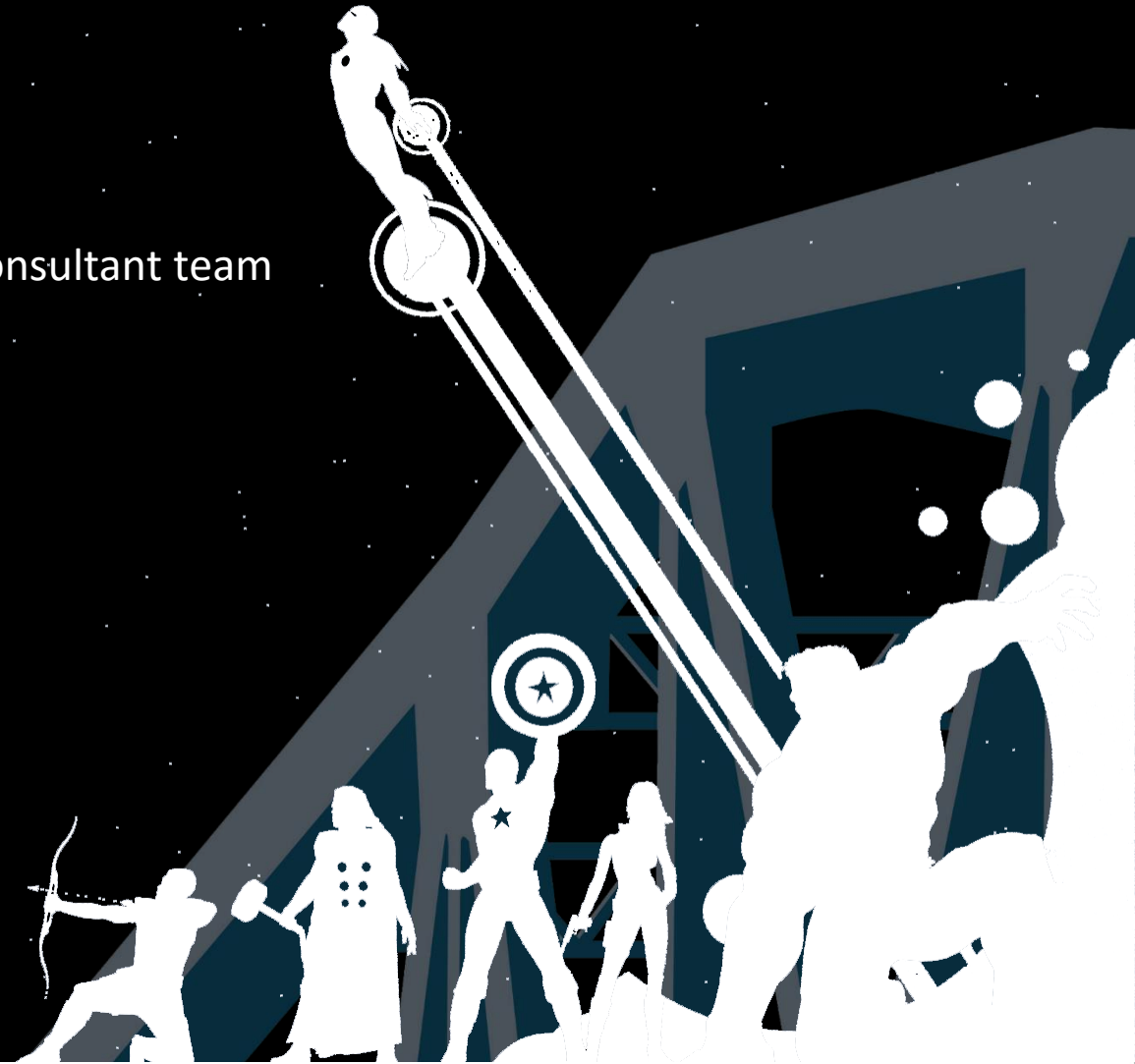
Sunday 11th June

- 11.30am - 3pm Exhibition of work
- 2pm Presentation

The Team

A comprehensive consultant team

- Architecture
- Facilitation
- Planning
- Arts and Engagement
- Transport Planning
- Economists
- Landscape Architect
- Cost Consultant
- Illustration
- Urban Design



Schools – pre charrette



Placing stickers on the Big Map



'Postcards from the Future'

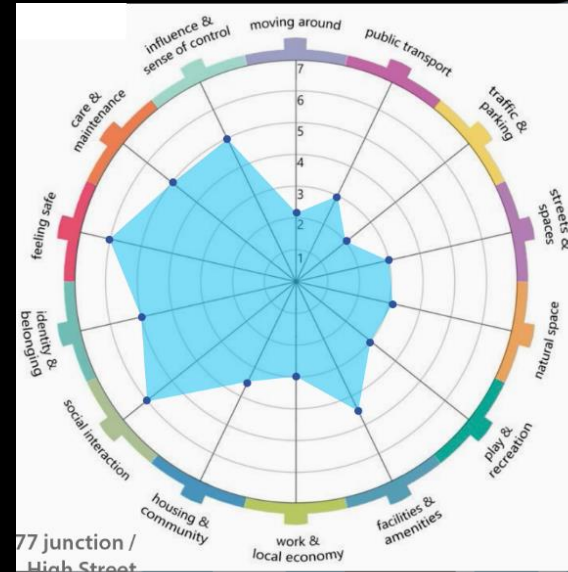
Day 1 – Study and Baseline



Groups of participants explored and examined different areas of Kincardine using the Place Standard toolkit.



Place Standard Toolkit



Area-based Place Standard group discussions

Kincardine - opportunities



Kincardine has wonderful natural resources, but would benefit from improved facilities and connections to these.



Kincardine is an historic Fife coastal settlement with Burgh status signified by its 15th century Mercat Cross - but there is virtually no interpretation of its heritage.



Devilla Forest has an extensive network of paths linking archaeological sites, leading to views of the Forth valley - there is lots of opportunity to extend access and facilities.



The High Street is at the heart of the town but it is dominated by buses and cars looking to park.

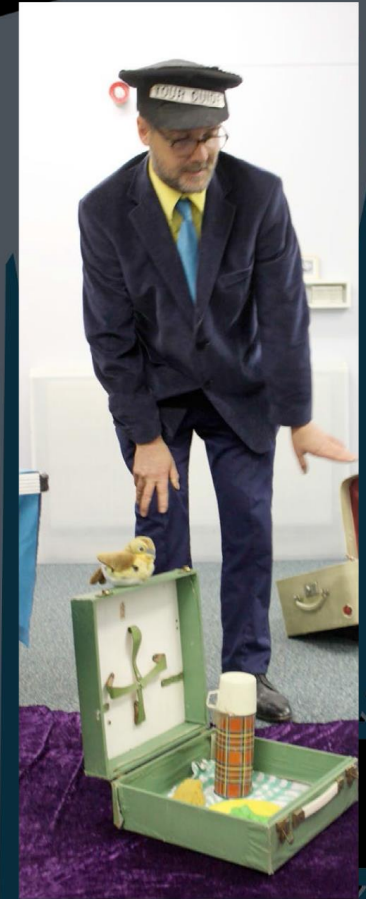


Trunk roads through the town centre are no longer as busy due to the construction of additional bridges.



Kincardine has a railway line ... but no station.

Pecha Kucha



Day 2 – Themes and Scenarios

A Creative Town and A Resilient Town

- Heritage and Identity
- Connectivity
- Retail and Enterprise
- Nature and Recreation
- Health and Wellbeing

What People Said:

“Develop the stopping point - chip shop, public WCs etc”

“Support local - local enterprise skills map for the area”

“Locals and visitors don't know what's going on in the town - increase signage & awareness”

“Encourage returning visitors - build a long-term offer”

“the North Approach Road is a fantastic public realm opportunity”

“Occasional closure of the High Street to vehicles - Gala Day, street festivals, Christmas”

Day 3 – Drawing and Conversation



The ideas to open up the waterfront are good, but this would have to work with the calls for a new station which would reinforce the railway barrier

Better drainage at the playing fields near the school would enhance this amenity
- poor drainage is obstructing events such as the Gala Day.

A quick and low-cost way to improve the waterfront would be the planting of wildflowers along the coastal area

It would be great to have a station at Kincardine, but would require parking provision and new access routes

Reinforce Kincardine's heritage - eg. statue to Sir James Wylie like the one to Admiral Cochrane in Culross

Day 4 – Outcomes and Presentation



1. Connectivity

Improving connections between existing focal points within and around the town was identified by a large proportion of participants as a key requirement in enhancing Kincardine for its local population.

- Establish greater priority for pedestrians at key streets and junctions
- Reconsider bus routes within the town centre
- Re-establish Dunfermline-Alloa rail connection with a station at Kincardine
- Extend Fife Coastal Path to the town centre - provide new facilities for users



Waterfront

Discussion focused on creating better connections to the waterfront area, and improving the visual impact of this key amenity.

- Creation of a looped walk from the centre to the waterfront
- Establish a new and safer crossing at the railway line
- Encourage a range of activities maximising the use of the space for locals and visitors



2. Heritage & Identity

Capitalise on Kincardine's rich cultural, physical and economic heritage

- Establish a clearer gateway / arrival point
- Improve signage and interpretation
- Creation / extension of further Heritage Trail



High Street / Town Centre

Comments showed a strong desire to enhance commercial activity in the High Street and make this a more community-friendly space.

- Improve physical appearance of the street & shop fronts
- Redirect bus routes to the North Approach Road
- Addition of attractive seating / cycle racks / paving



3. Enterprise

Creation of new enterprises within and around the town following decline in traditional industries.

- Strengthen links with Tulliallan Police College
- Draw on the resource of Devilla Forest
- Examination of vacant space for use as enterprise sites

4. Health & Well Being

Address the underprovision of facilities for sport and recreation.

- Place facilities in central village location that are accessible and inclusive and can be used by all members of the community.



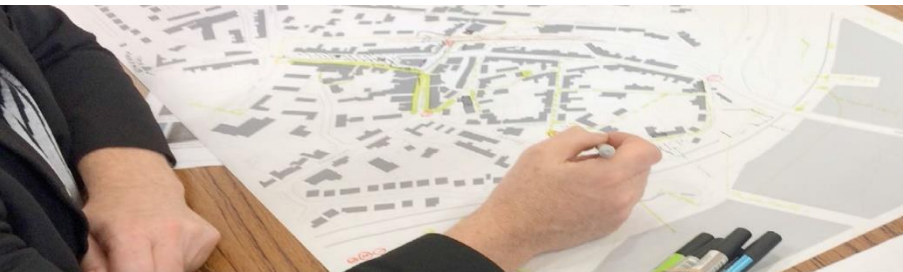
A977 junction / North Approach Road

The reorganisation of this route was seen as a vital step in improving and re-linking the town centre.

- 'De-trunk' N. Approach Road - narrow carriageway
- Re-instate roundabout or simple T-junction
- Visual improvements
- Improved pedestrian crossings at A977

Themes

Focus Areas



Activities and Actions

Where is Kincardine going to?

- Community Links and Active Travel Project
- Devilla Forest Access and Interpretation Projects
- Rejuvenated Community Group – GoForth
- Lanes Projects
- Positive Mindset

Observations

underlying
Themes

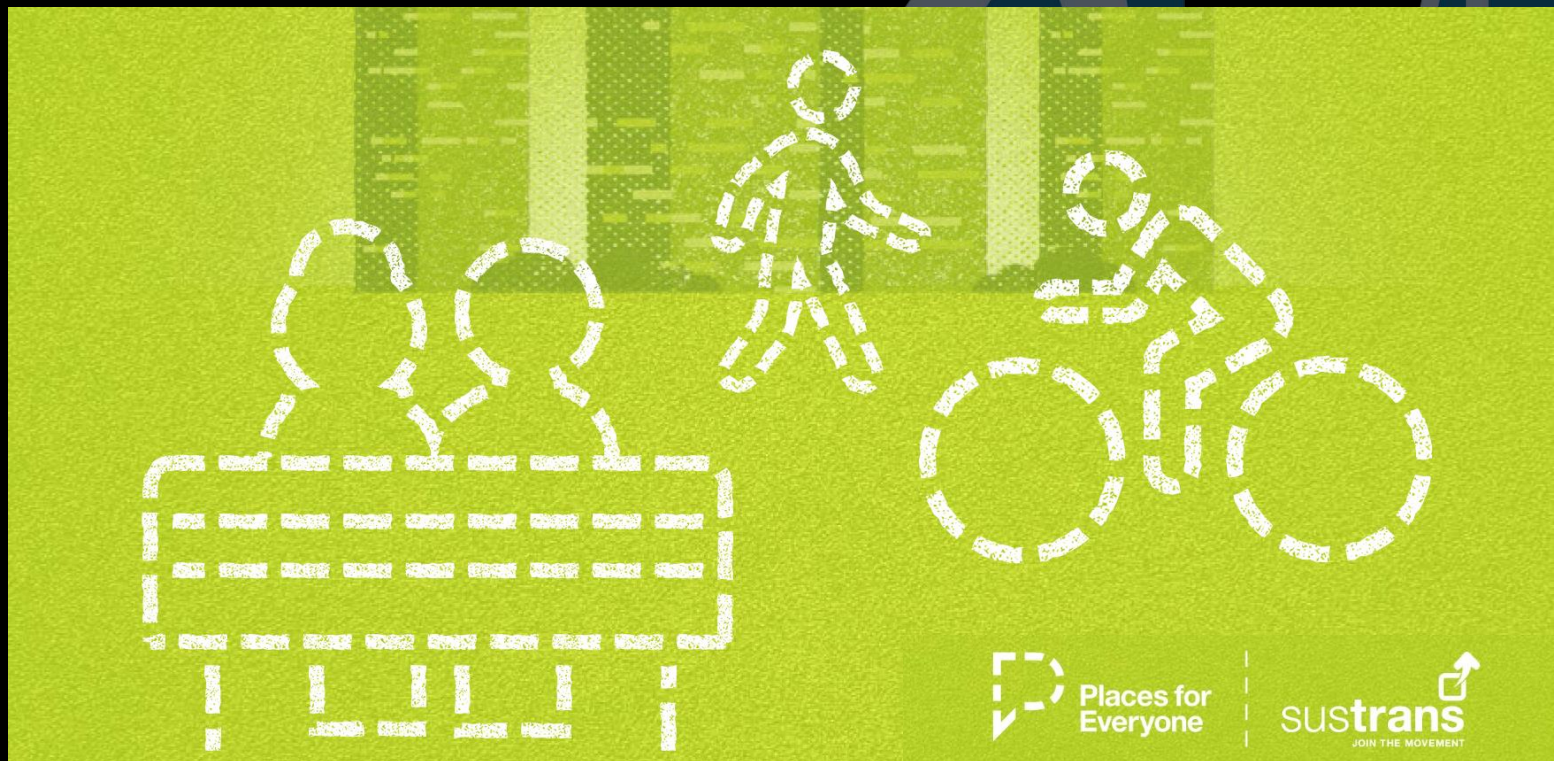
deliverable
Actions



Active Travel

Places for Everyone

- Community Links Funding
- New cycle network and provision
- Improved links across the village
- Behavioural change in cycle use to local Primary School



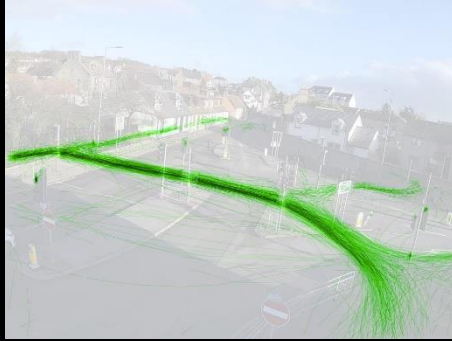
Re-engaged

New Opportunity to Work with the Community



Movement Survey

Streets Systems survey – tracking movement



Active Travel Outcomes

Improvements to five key aspects of Kincardine

- Significant reduction in Road Space
- New Cycle and Pedestrian Routes
- Improved High Street, Junction and North Approach Road
- Evolving 'People First' Design Principles
- Community making decisions about the future of Kincardine



Success

'Success is not in what you have, but who you are.' Bo Bennett

Who is Kincardine?

- Strong direction and guidance – Coalfields Regeneration Trust
- Deliverable Phased Action Plan
- Strong structure to the outcomes – easily identified and delegated
- A healthy mindset
- Empowered Community

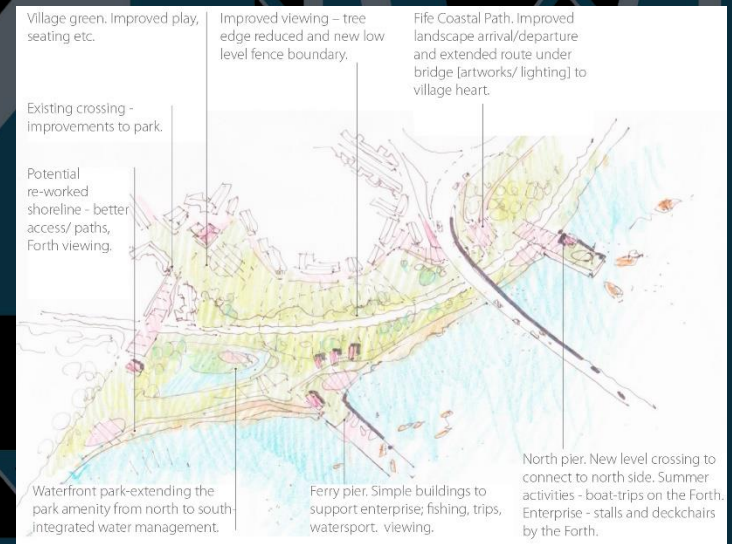
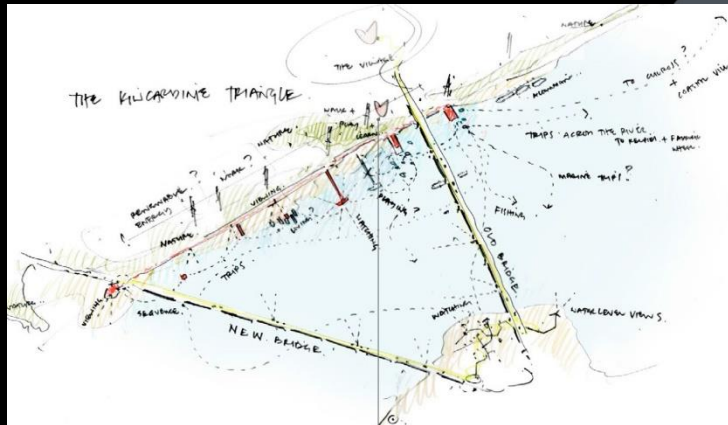


Community Focus

Reflections from Members of the Kincardine Community

- What were your expectations of the Charrette Event?
- What were the most successful aspects of the Charrette?
- Place Standard Toolkit – how did this help?
- What was the most significant outcome of the Charrette?
- How has your perception of Kincardine changed?
- How have recent activities had a positive impact of health, wellbeing and mindset?

Sketch ideas for improving physical and visual access to the waterfront.



Summary of this session

- Strong Leadership
- Community Empowerment
- Change of Mindset
- Health and Behavioural Change Goals
- Clear outcomes
- Deliverable Action Plans

'Kincardine is a
forgotten village'

KINCARDINE IS
NOT PERIPHERAL
KINCARDINE IS
THE
CENTRE
go forth!
Kincardine

'Kincardine is
first in life'