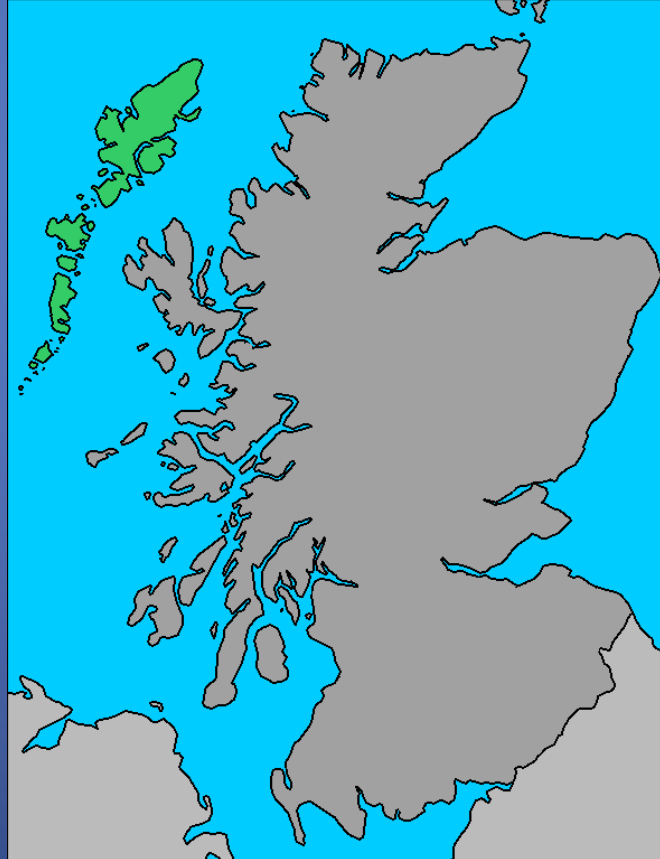


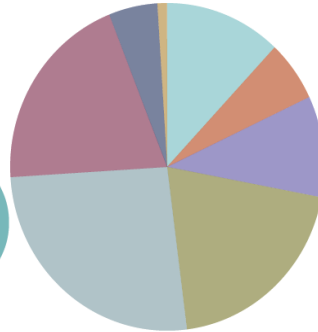
The Outer Hebrides



How good is our place?

Results from the Place Standard Survey in the Outer Hebrides

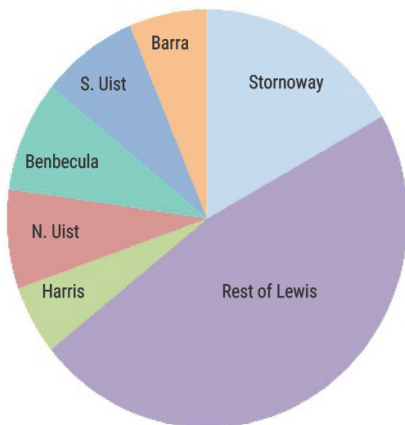
1174 responses
6778 comments



Age of respondents

- Under 16
- 16-24
- 25-34
- 35-44
- 45-54
- 55-64
- 65-74
- 75+

Proportion of respondents from different areas

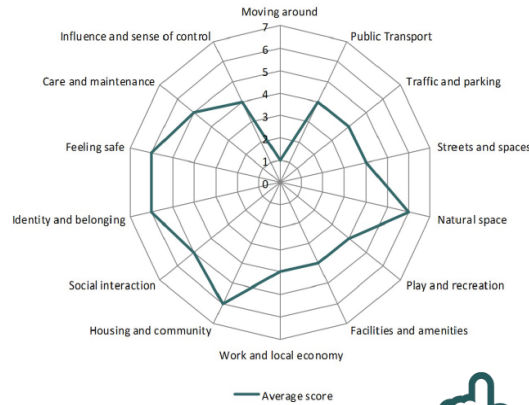


However this bar chart shows which areas you felt the CPP should prioritise



Average Rating for the Outer Hebrides

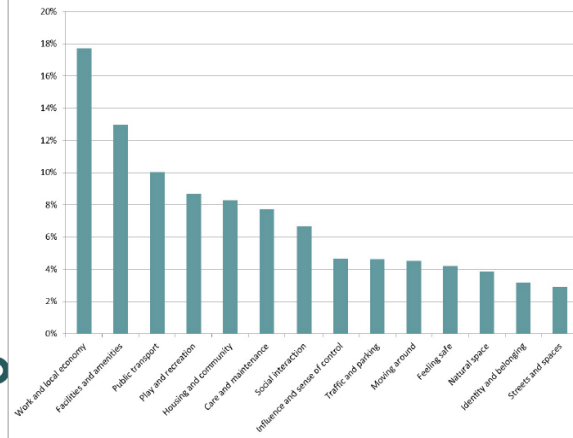
1: A lot of room for improvement
7: No room for improvement



The diagram shows how you scored each theme area in relation to room for improvement



Your chosen priorities



What happens next:

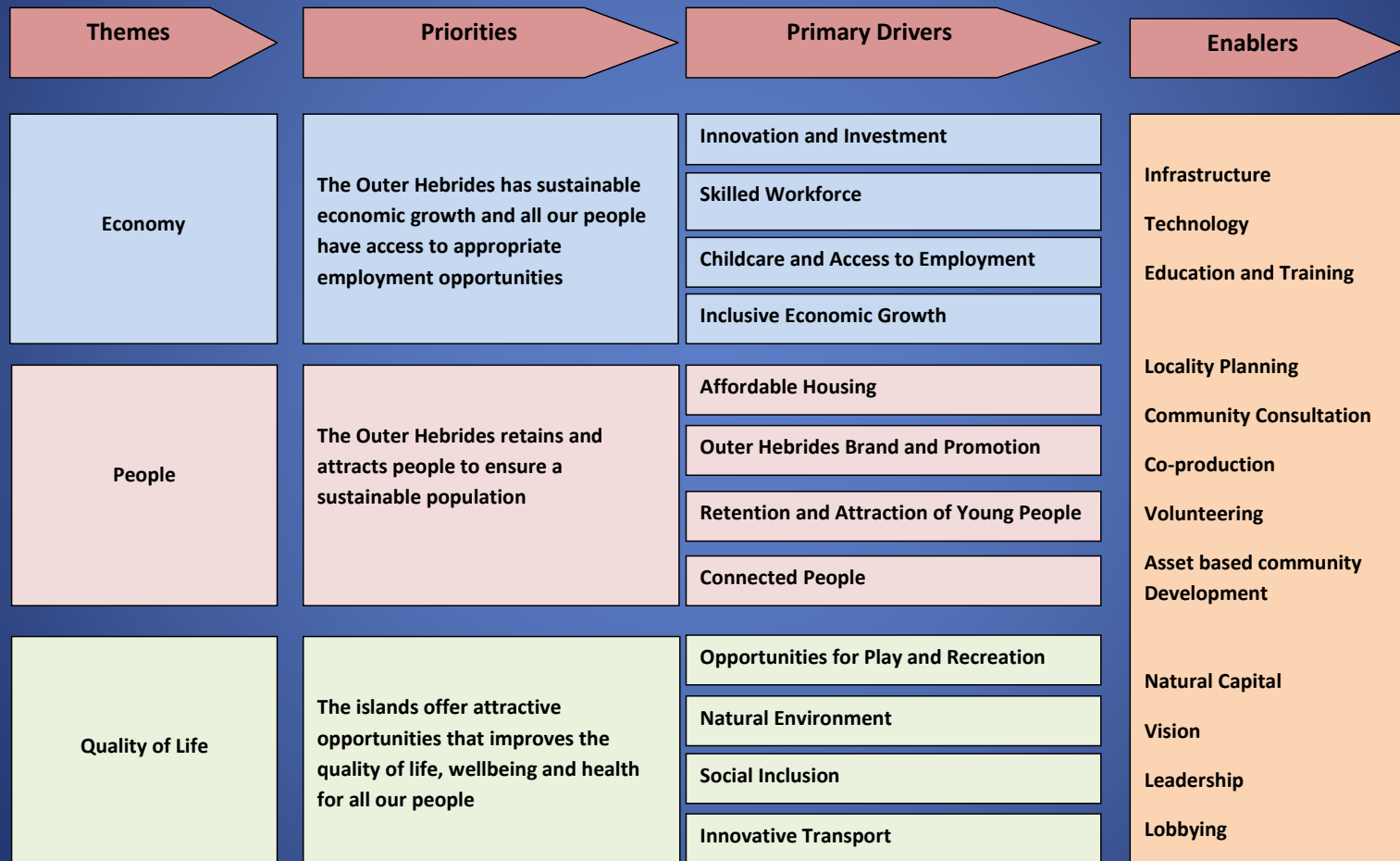
The Community Planning Partnerships looks at all the information you gave us, data from other sources (such as the Health Board and Scottish Government) and they will then decide on the priorities it will focus on trying to improve for the next few years.

We will also meet with residents in two locality areas to look at the information from the survey in more detail and develop plans.

More detail on the survey will be issued in due course. For any queries please contact info@ohcpp.org.uk

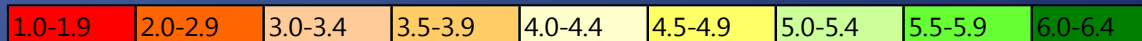


How did it inform the LOIP?



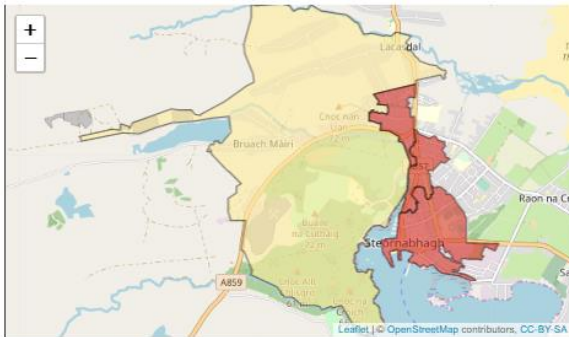
Local and island variations

	Stornoway	Rural Lewis	Harris	North Uist	Benbecula	South Uist	Barra	Outer Hebrides Average
Moving Around	4.12	3.30	3.53	3.16	3.35	2.97	3.06	3.40
Public Transport	3.77	3.79	3.98	3.21	3.49	3.17	2.96	3.62
Traffic and Parking	3.69	3.99	4.19	4.63	4.30	4.28	4.17	4.06
Streets and Spaces	4.17	4.03	4.62	4.25	3.71	4.00	3.73	4.05
Natural Space	5.30	5.12	5.33	4.98	4.53	5.17	5.05	5.10
Play and Recreation	3.91	3.98	4.47	3.54	3.81	3.47	3.87	3.89
Facilities and Amenities	3.90	3.95	4.18	3.75	3.93	3.45	3.93	3.89
Work and Economy	3.32	3.20	3.04	2.98	3.54	3.40	3.54	3.27
Identity and Belonging	4.45	4.54	5.02	5.05	4.44	4.89	5.29	4.66
Social Interaction	4.03	4.05	4.56	3.94	3.62	3.70	4.27	4.01
Influence and control	3.93	3.79	4.65	3.98	4.22	3.77	4.00	3.93
Feeling Safe	5.46	5.19	5.81	5.33	5.27	5.62	5.57	5.35
Care and Maintenance	4.33	4.32	4.54	4.29	4.03	4.31	3.70	4.26
Housing and Community	4.53	4.69	4.92	4.84	4.89	4.74	4.61	4.71

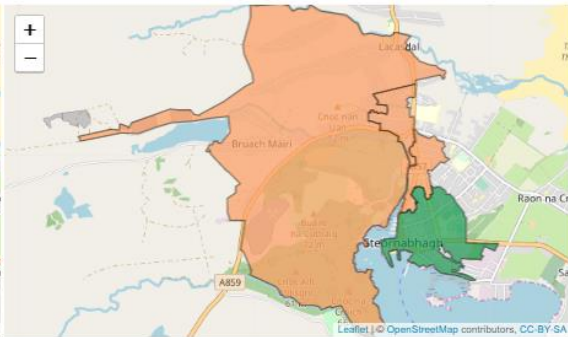


Stornoway West

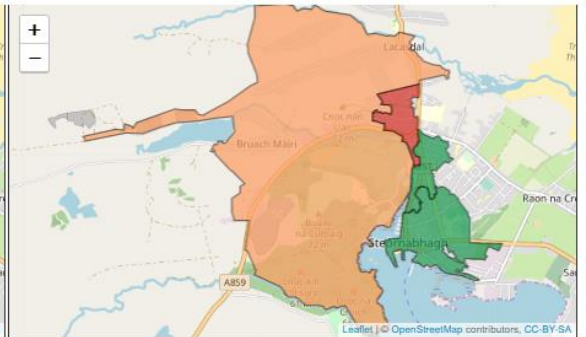
Percentage of Children in Poverty



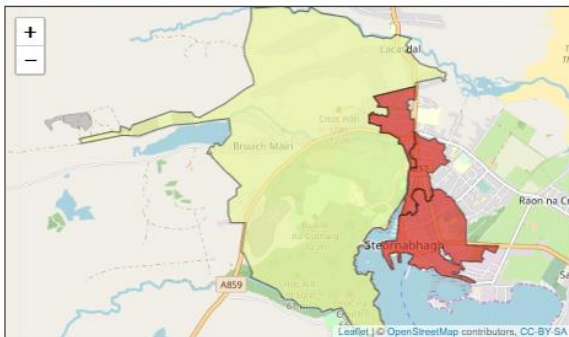
Average Highest Attainment



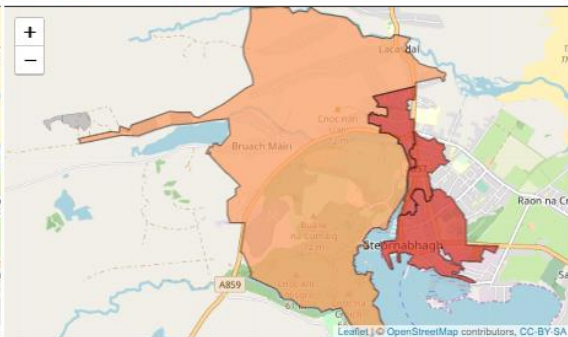
% School Leavers Entering Positive Destinations



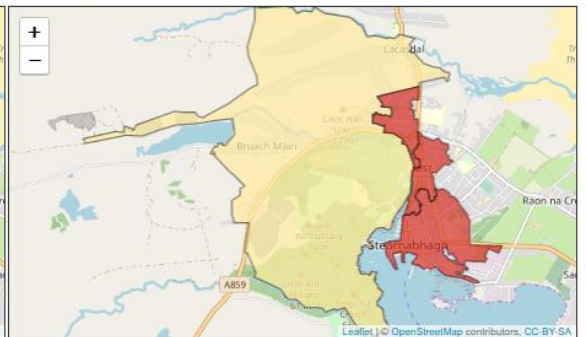
% Aged 16-64 Receiving Out of Work Benefits



Number of SIMD Crimes per 10,000 People

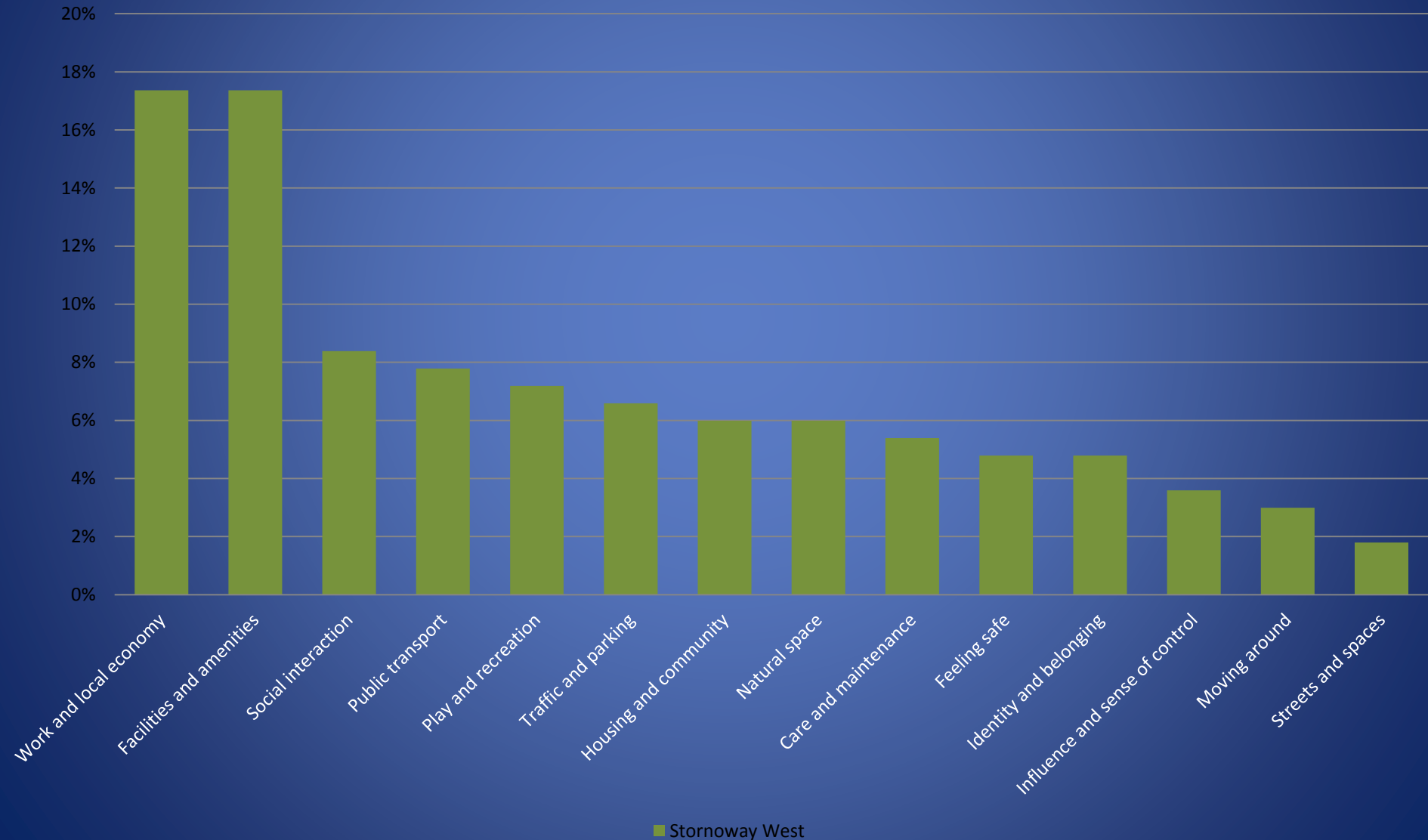


Emergency Admissions (65+) per 100,000 People



Priorities for Stornoway West

Stornoway West Priorities









CEARN SHEIL
Shillay Court


**NO BALL
GAMES**



What people told us

Work and Local Economy

Is there an active local economy and the opportunity to access good quality work?

Good quality work can offer important benefits through the income, activity, social networks and sense of identity and satisfaction that it can bring. A thriving local economy can provide work opportunities and help create lively and attractive places where people want to spend time.

Is there an active local economy and the opportunity to access good quality work?



Summary of Key issues

- Lack of job opportunities and potential for career development. Job availability not good outside public sector.
- Lack of availability of childcare and the costs of childcare restrict opportunity.
- Training, education and skills are perceived as requiring strengthening, access limited for variety of reasons.
- More support/incentives required for Business start-up and reduction of associated costs. Local facilities not available
- Lots of comments concerned about retention of young people and opportunities for career development.
- Improvements required in connections through transport/ITC and Broadband.



Engaging with the community of Stornoway West around their views of place

Rebecca Campbell
Specialty Registrar in Public
Health

Findings

- **Influence and sense of control**

Frustration from all ages re not feeling listened to, participating but never receiving feedback

- **Employment**

Low unemployment but limited job type. A 'low wage' economy; limited progression opportunities

Zero hours contracts common/ seasonal work: reduce job security & impact on health

- **Facilities and Amenities**

Shops: limited, out of date, expensive. Turn to online

Childcare: limited, expensive, people putting names down before the child is born

- **Public Transport**

Reliability/ cost/ value tickets

Employed on a Sunday

Acknowledged an issue with no easy solution.

What are we doing?

- Partnership with local Community Association
- CPP partners based in area
- Developed local Taigh Ceilidh
- Community events
- Successful funding bid, Development Worker
- **Development Plan** (includes career/employment/financial advice, age specific groups, internet access, environmental project, youth work, playpark development, toddler group, horticulture project, community newsletter, transported walks, energy advice, range of evening classes)

Any Questions?

