

Practicing Place Standard Tool In Macedonia

Dragan Gjorgjev/Mirjana Dimovska
IPH Skopje, Republic of North Macedonia





INHERIT

Health | Equity | Environment

- **INter-sectoral Health and Environment Research for InnovaTion**
- **4-year (2016-2019) Horizon 2020 research project**
- **Consortium of 18 partners around Europe, coordinated by EuroHealthNet**



The INHERIT project (2016-2019), coordinated by EuroHealthNet, has received funding from the European Union's Horizon 2020 research and innovation programme under grant agreement No 657364

Making Place Conference
10 June 2019
Old Fruitmarket, Glasgow

What can we do today to ensure a sustainable future?

What will motivate and enable us to live and behave in ways that are better for us, the environment and society at large?

INHERIT Objectives

To define effective policies, interventions and innovations that promote environmental sustainability as well as the health and well-being of *all* European citizens, across the socio-economic gradient.

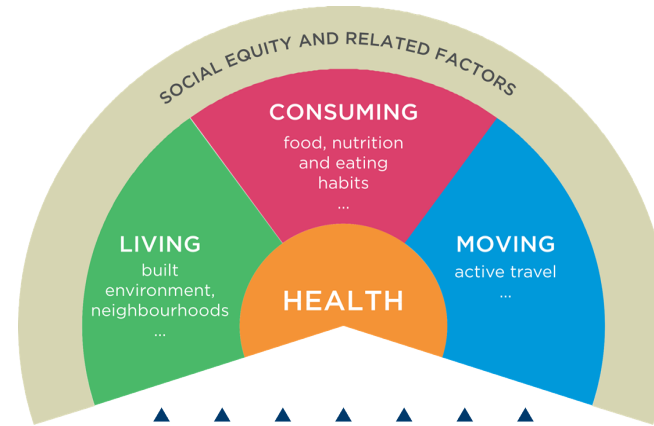
Specific focus on:

- Encouraging lifestyle and behavior change across Europe;
- Promoting more holistic approaches (interdisciplinary work and inter-sectoral collaboration);
- Equality in access and exposure to conditions that enable good health;
- Contributing to the evidence of what is effective and could be transferred and scaled-up to have an impact.



INHERIT Context

➔ INTERSECTORAL POLICIES, INTERVENTIONS & INNOVATIONS



➔ **MODIFYING**

- Lifestyles
- Behaviours

➔ **AIMING FOR A 'TRIPLE-WIN'**

Environment



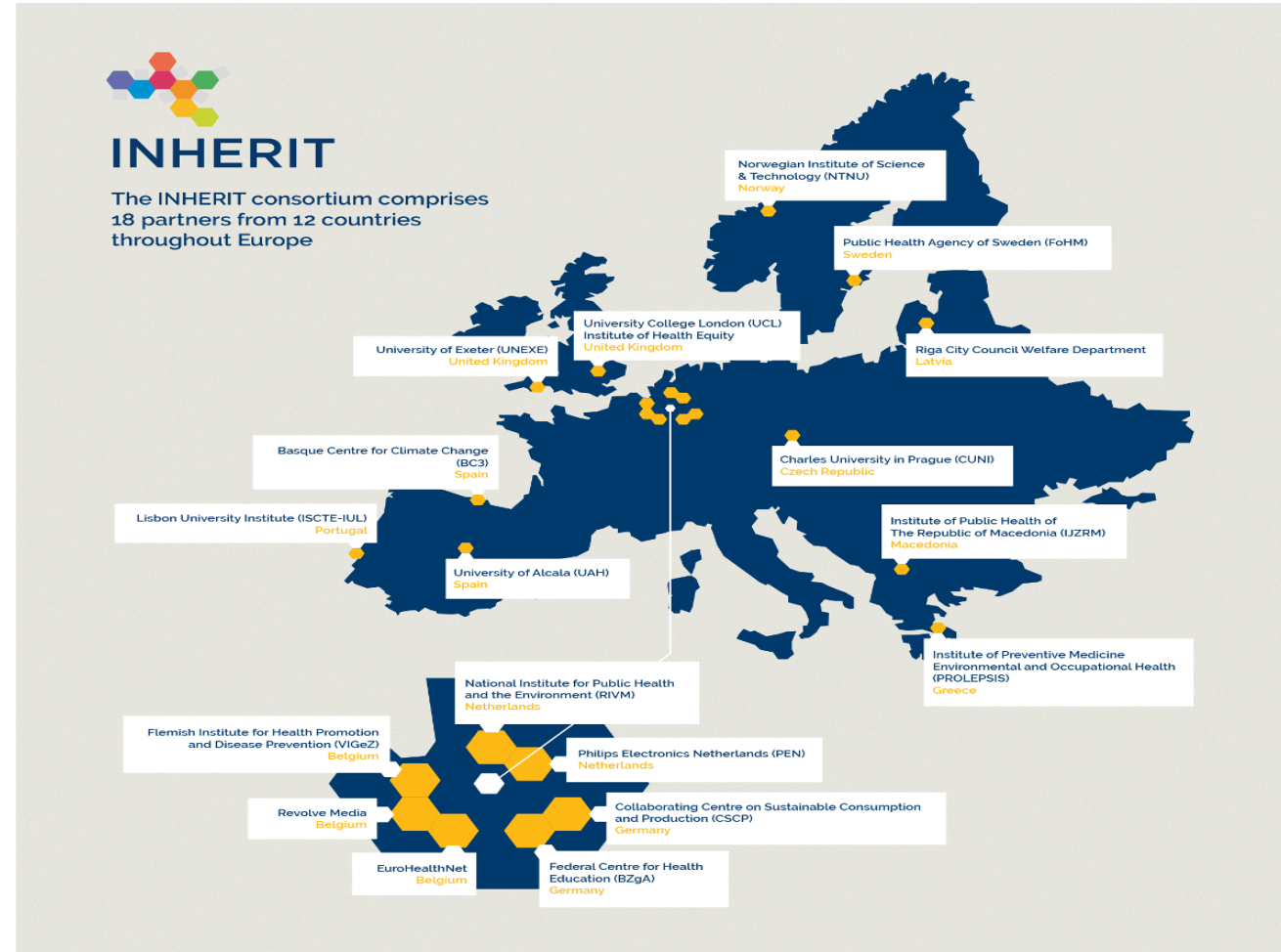
Health



Equity



INHERIT countries involved

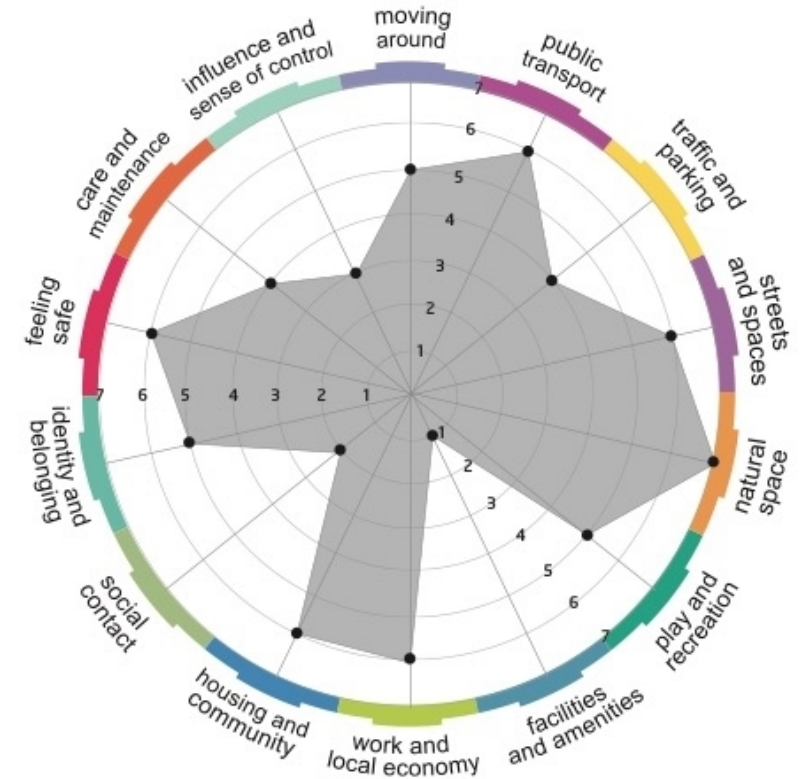


The INHERIT project (2016-2019), coordinated by EuroHealthNet, has received funding from the European Union's Horizon 2020 research and innovation programme under grant agreement No 667364

Making Place Conference
10 June 2019
Old Fruitmarket, Glasgow

PST&INHERIT – Main point

Introducing inclusive approach in planning the urban places and implementing the healthy living approaches – by intensive and open discussion among different stakeholders in one common direction and goal - better place for living for all.



PST&INHERIT – addressing need for change

Start changing behaviour and perception about healthy living through **enriching the knowledge and skills** among stakeholders for maximizing the potential of the physical and social environment in understanding and supporting the health, wellbeing and high quality of life.



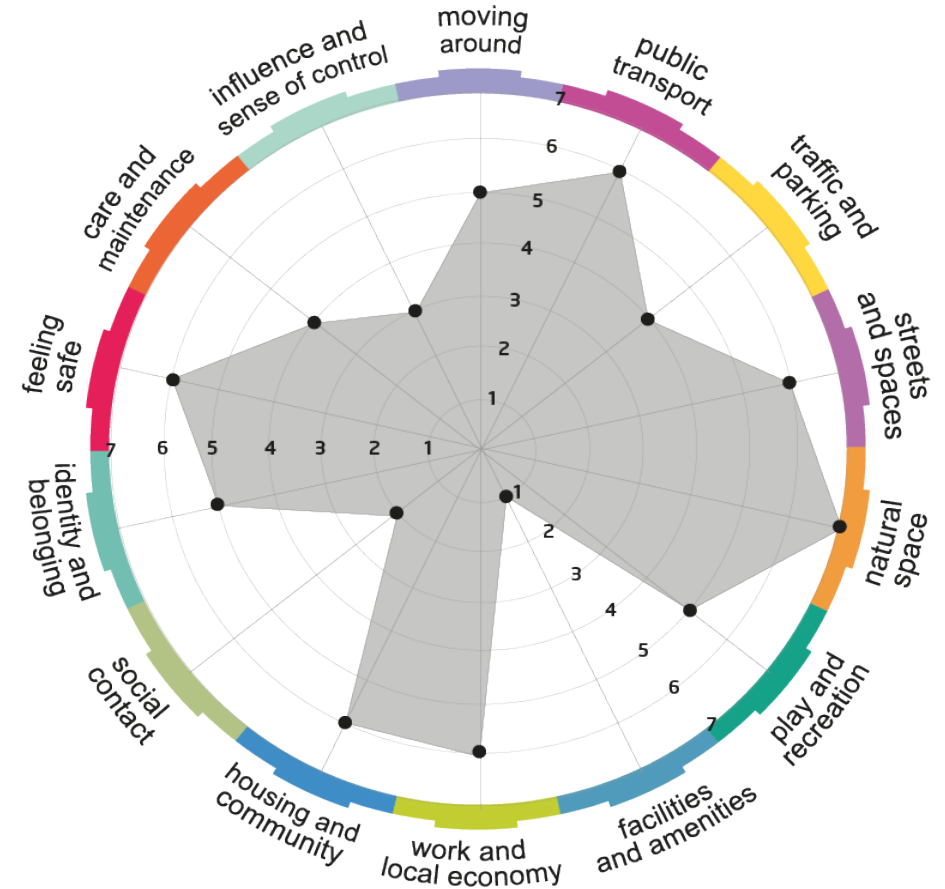
PST – WHAT

simple framework
to structure
conversation about
place

<https://www.placestandard.scot>

PST – WHEN

April-October 2018



PST – Introductory hook – addressing need for change

Key objectives

- To understand how the Place Standard can be implemented across local settings in Macedonia and share learning for future use of the tool
- Using the tool to analyze current level and efficiency of inter-sector cooperation, success factors and barriers



PST – Introductory hook – addressing need for change

WHO?

IPH Project team - Prof. Dragan Gjorgjev – Project Coordinator in the Institute of public team involved in INHERIT – **Partner Karpos municipality** - Mr. Stefan Bogoev, Mayor

WHY PST?

The healthy and wellbeing perspective of our settlements are at most critical level? We must do (change) something;

PST as a leading example in the future – project results and level of cooperation and enthusiasm will be an excellent starting point in changing behavior and policies in our living places;

Meeting by meeting the level of awareness and willingness for participation and changes evolved.

PST – WHERE

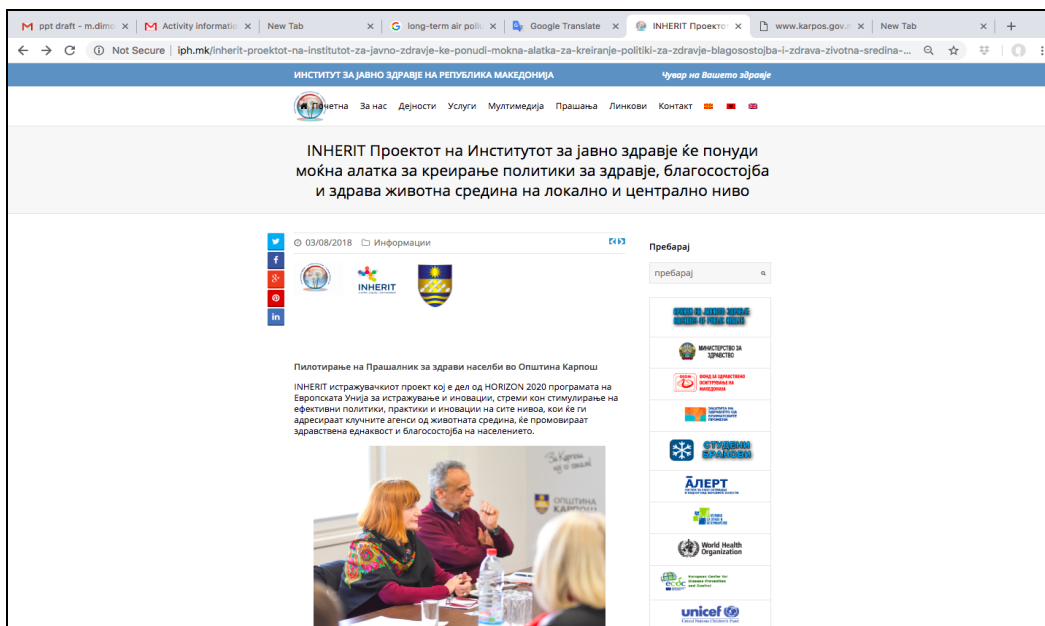


Karpos Municipality

1-st step / Memorandum of understanding and cooperation signed and project team established



Promotion campaign – web platform IPH



Promotion campaign – web platform Karpos municipality



Piloting PST Tool

June – October 2018

- Seminars with **focus groups** (citizens selected by different criteria, pensioners, parents of school children)
- **Interviews (disabled persons)**
- **On-line Questionnaire**



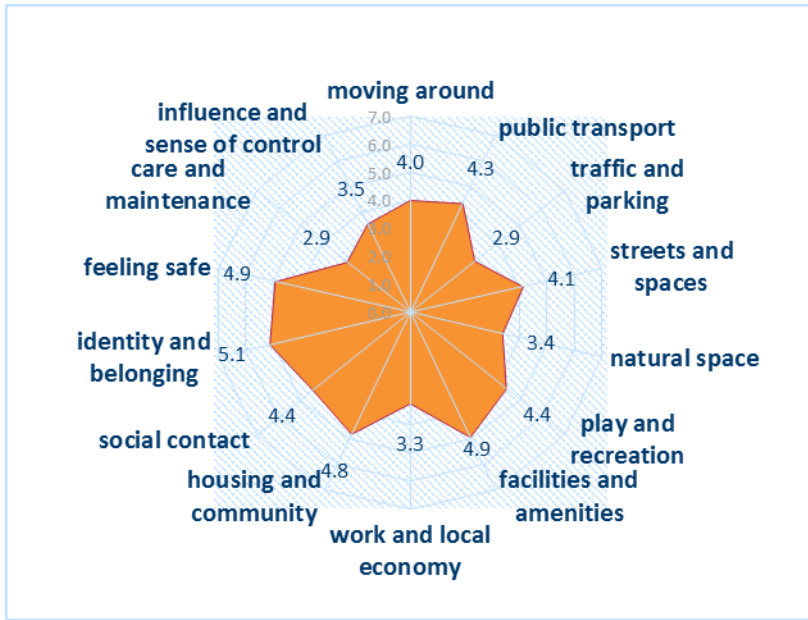
PST - Evaluating intersectoral work

Focus group with

- Public administration
- Policy makers (councilors)
- Citizens
- NGO
- Business sector



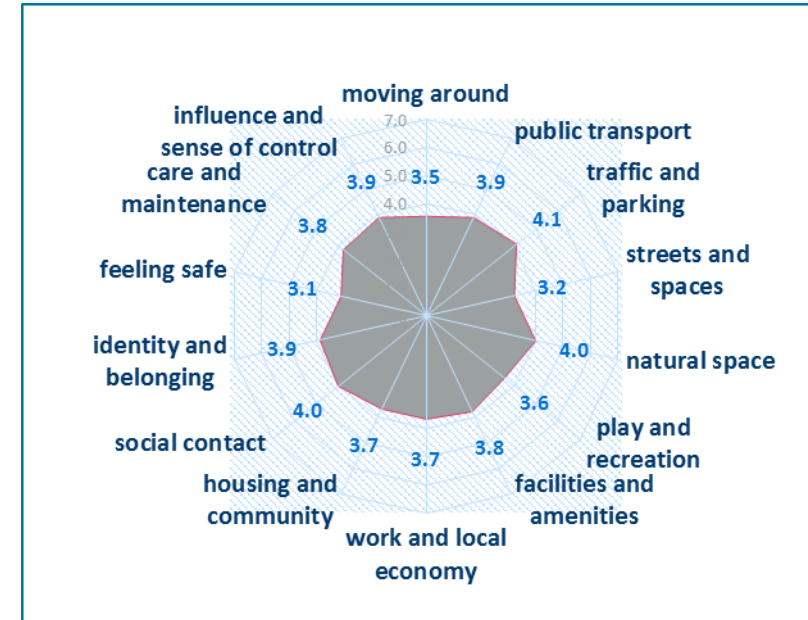
Main findings – comparison focus groups and on line Interviews



Citizens FG, average score 4.1



On-line questionnaire, average score 3.4



Administration, average score 3.7

Main findings - less and most (graph.) 7 (traffic and parking) and 3 (identity and belonging)

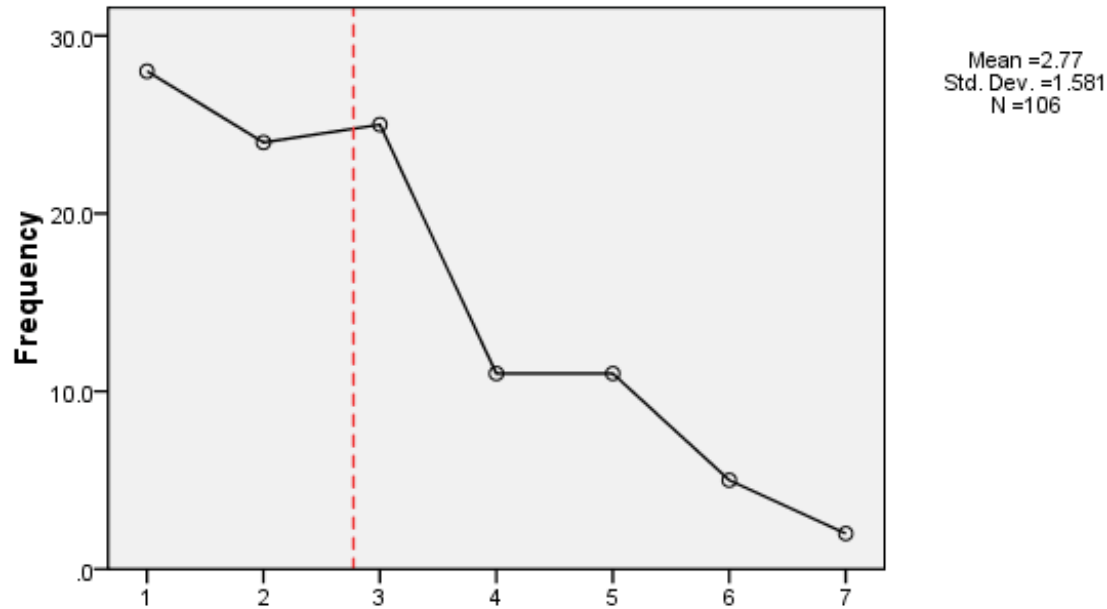


Figure 1. Attitudes and perceptions of the citizens about the organization of traffic and parking in the municipality

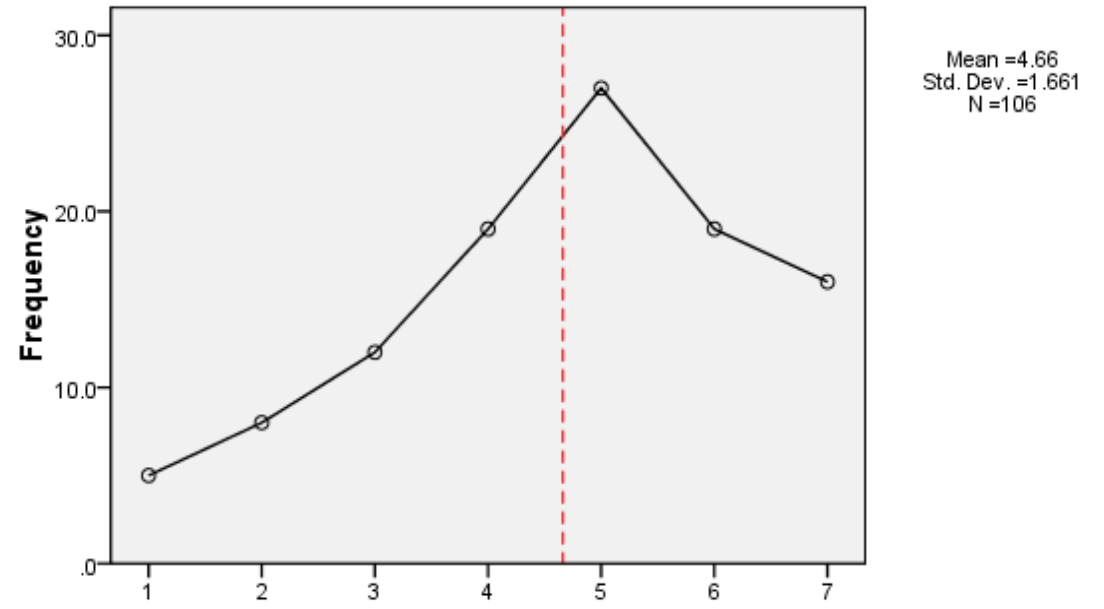
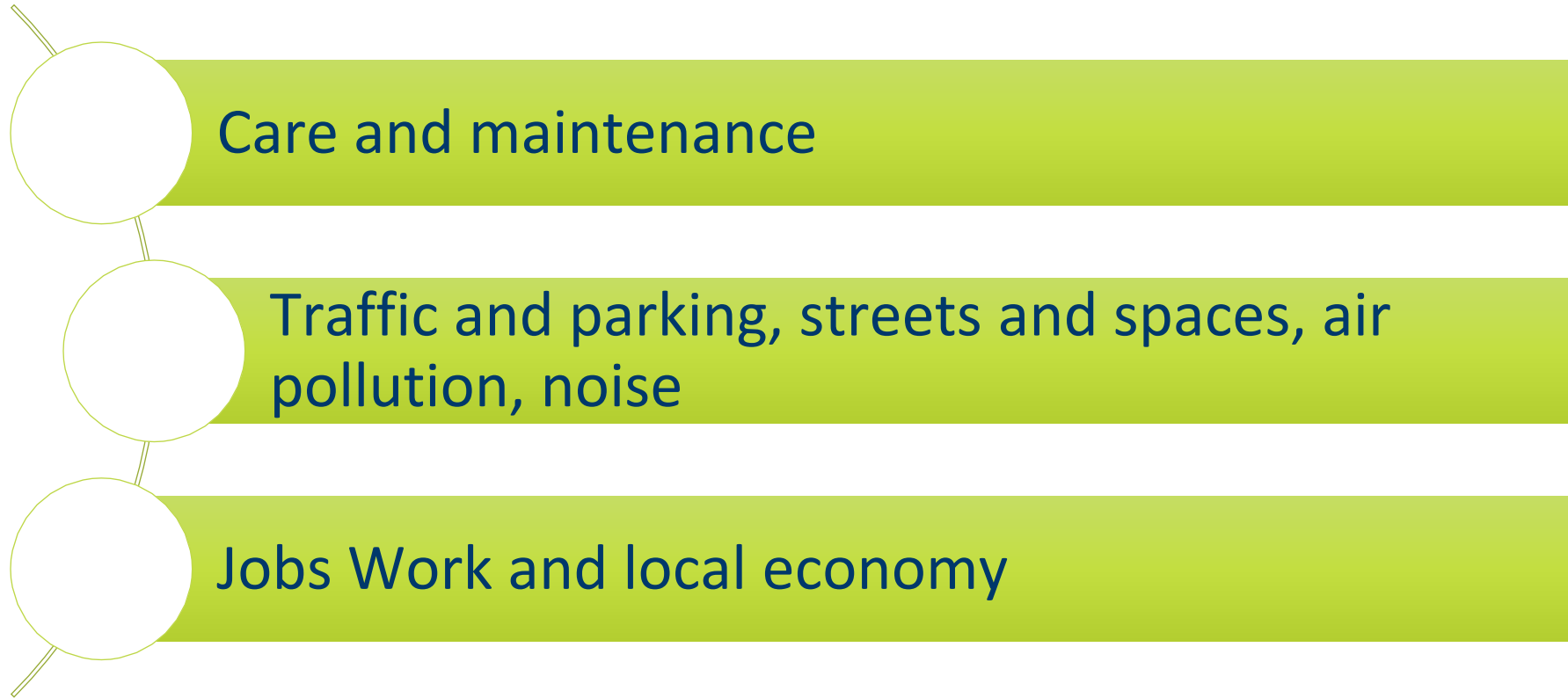


Figure 2. Attitudes and perceptions of the citizens and their sense of belonging

Local Context Moving around



PST - Priorities for the citizens



PST Karposh – Conclusions meeting objectives

- Stakeholders – especially citizens **fully accepted PST** as a useful tool in influencing policy in their place
- Municipality **top management** (Mayor and councilors) find it useful for creating the next year annual policy and budget plan



PST Karposh – Lessons learned and challenges

Great for:

- Getting people involved;
- Reaching a large number of inhabitants quickly;
- Generating a lot of information.

Methods:

- Can be used in different ways: online, discussion groups, interviews;
- Input about weighing the outcome of the different methods would be helpful
- Vocabular of terms useful



PST in Macedonia – next steps

- Follow up of the progress in Karpos municipality
- Start of the piloting in broader area of City of Skopje (Memorandum signed)
- Spreading the Tool in other municipalities – ongoing discussions with few of them
- Including the tool in the teaching and training activities in the Medical Faculty and School of Public Health



PST Karpos – lessons learned and challenges

- PST **increased the level of knowledge regarding healthy places and confidence** among the citizens to be actively involved in decision making process
- Remarks, comments, recommendations are more important than scores
- Proper implementation **very much rely on:** good governance and top level support, excellent organization, preparation, training of interviewers and focus group moderators, good timing, pre-knowledge of the participants/respondents



Local Context

Natural Spaces

