



DESIGN DUNFERMLINE

Our place making journey

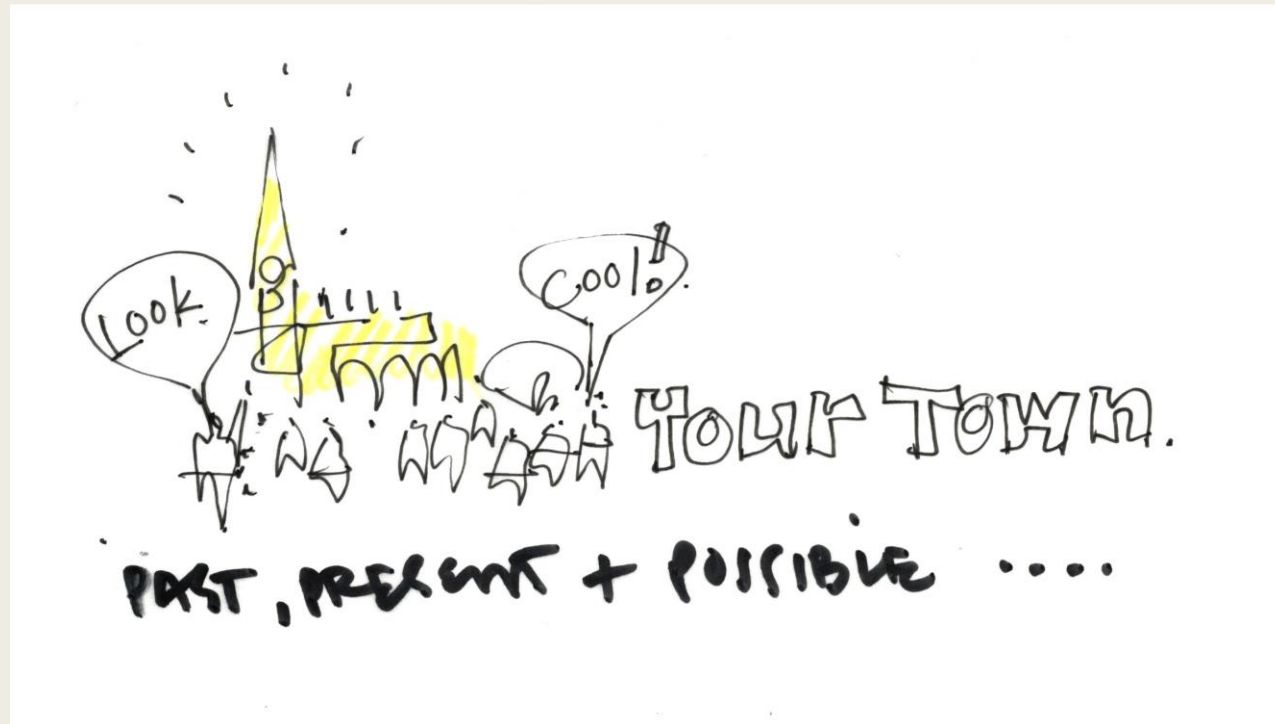


A photograph of Dunfermline Palace at dusk. The building is illuminated from within, showing its Gothic architecture with several tall, pointed spires. The scene is framed by the dark, bare branches of trees in the foreground. The sky is a deep purple and blue. A semi-transparent grey box is centered over the image, containing the text "DUNFERMLINE, ANCIENT CAPITAL OF SCOTLAND" in a yellow, serif font.

DUNFERMLINE, ANCIENT
CAPITAL OF SCOTLAND

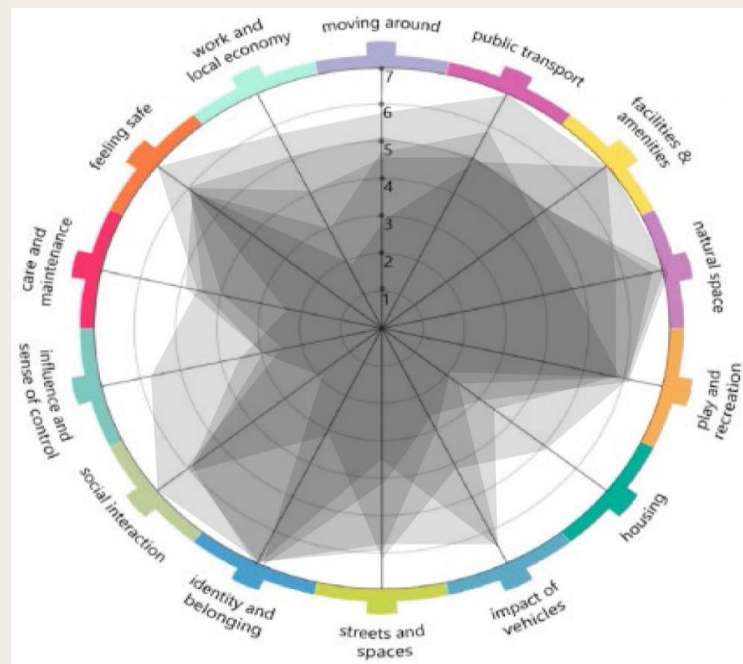
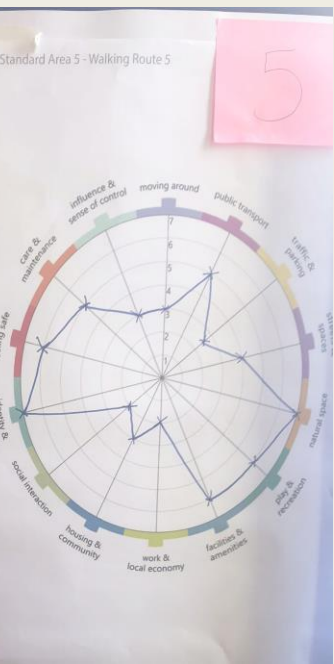
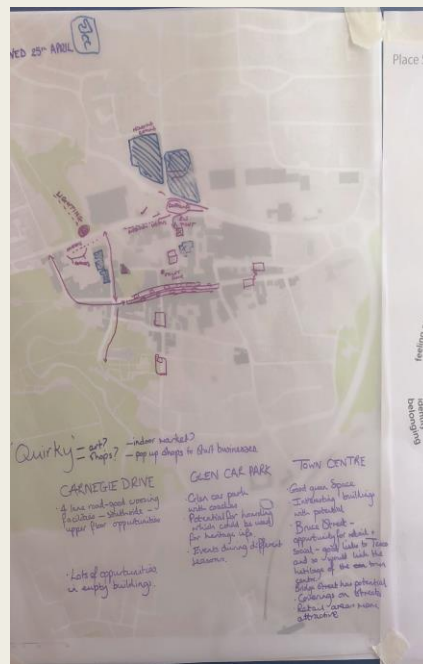
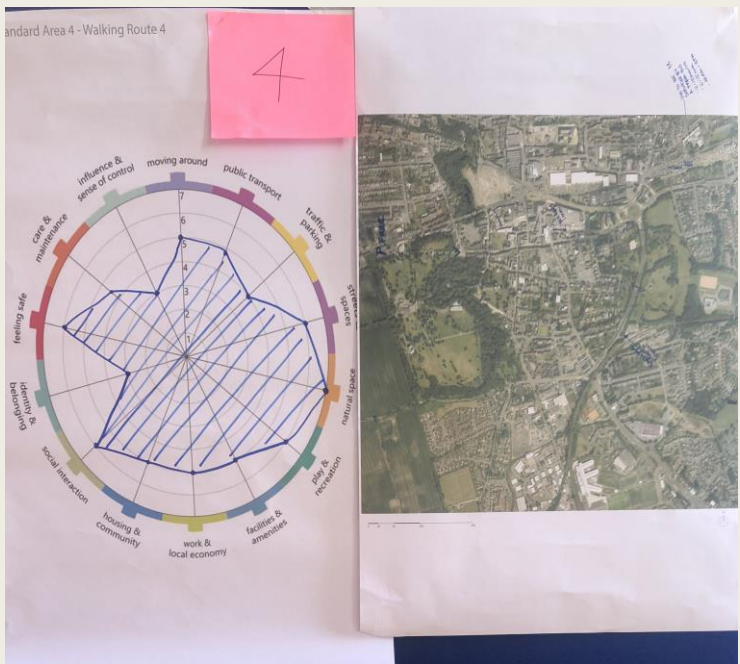
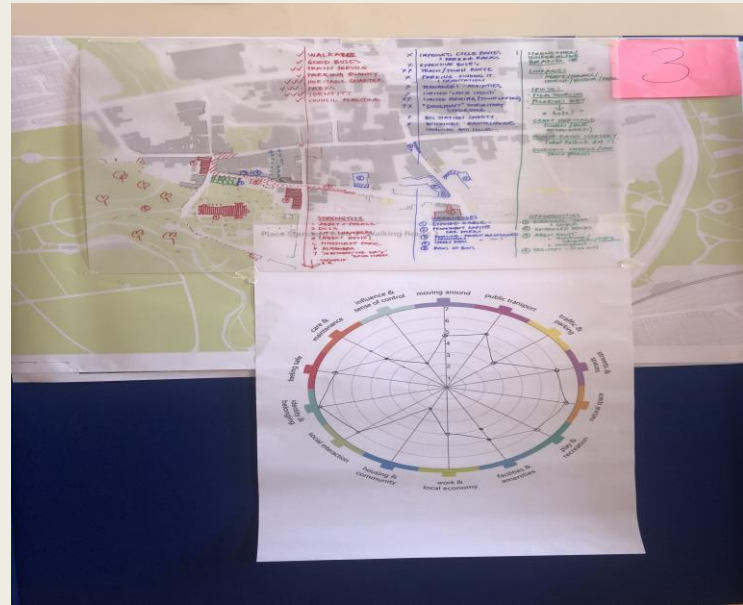
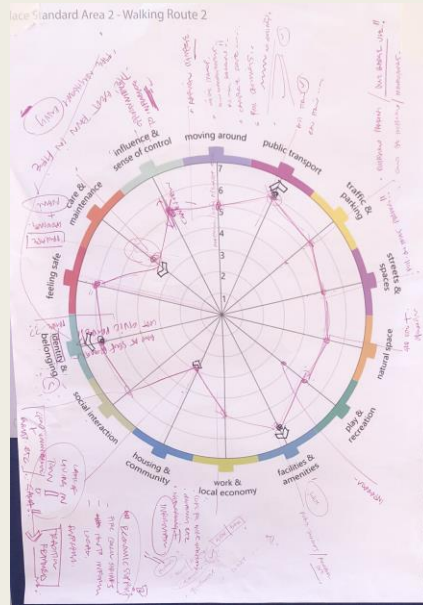
Design Dunfermline 2018

Dunfermline is a place with a unique and important heritage playing a key part in Scotland's story.
That heritage now has the potential to play a vital part in the regeneration of the town.





DONFERMLINE
we love this city



Emerging Themes

- How do we create a vibrant Town Centre for living in?
- How do we create a Town Centre where enterprise can thrive?
- How do we create a well connected Town Centre?
- How do we create a great place to visit?
- How do we create an accessible an inclusive Town Centre?

HOW DO WE CREATE A VIBRANT TOWN CENTRE FOR LIVING IN?



How do we create a Town Centre where enterprise can thrive?



How do we create a great place to visit?



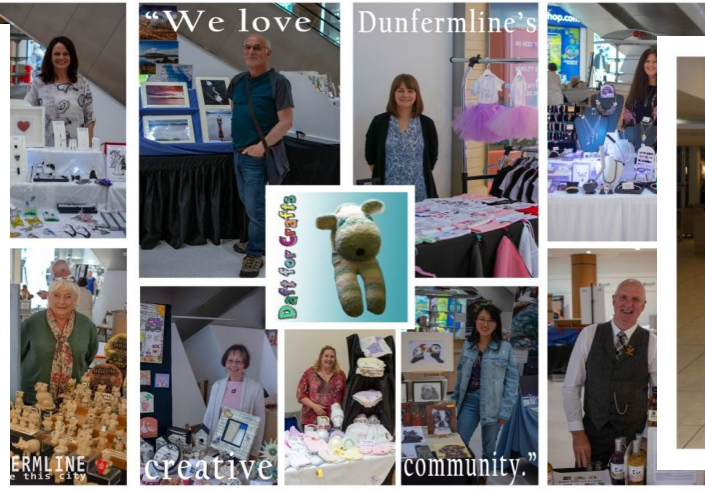
How do we create an accessible and inclusive Town Centre?



How this fits into our Local Community Plan



Community is our strength



Design Dunfermline

Our place making journey

Lisa Edwards
BID Manager
Dunfermline Delivers
lisa@dunfermline-delivers.co.uk

Gillian Taylor
Area Community Manager
Fife Council
gillian.taylor@fife.gov.uk