



**Hyb
Cymorth
ACE**

**Hyrwyddo a
Herio dros
Newid**

**Champion &
Challenge
for Change**

**ACE
Support
Hub**

Jo Hopkins – Director, ACE Support Hub

Laura Tranter – Community Engagement Lead Ace Support Hub

From Adversity to Wellbeing: How Communities Thrive

ACE Support Hub



To help Wales become a
world leader in preventing,
mitigating and tackling ACEs

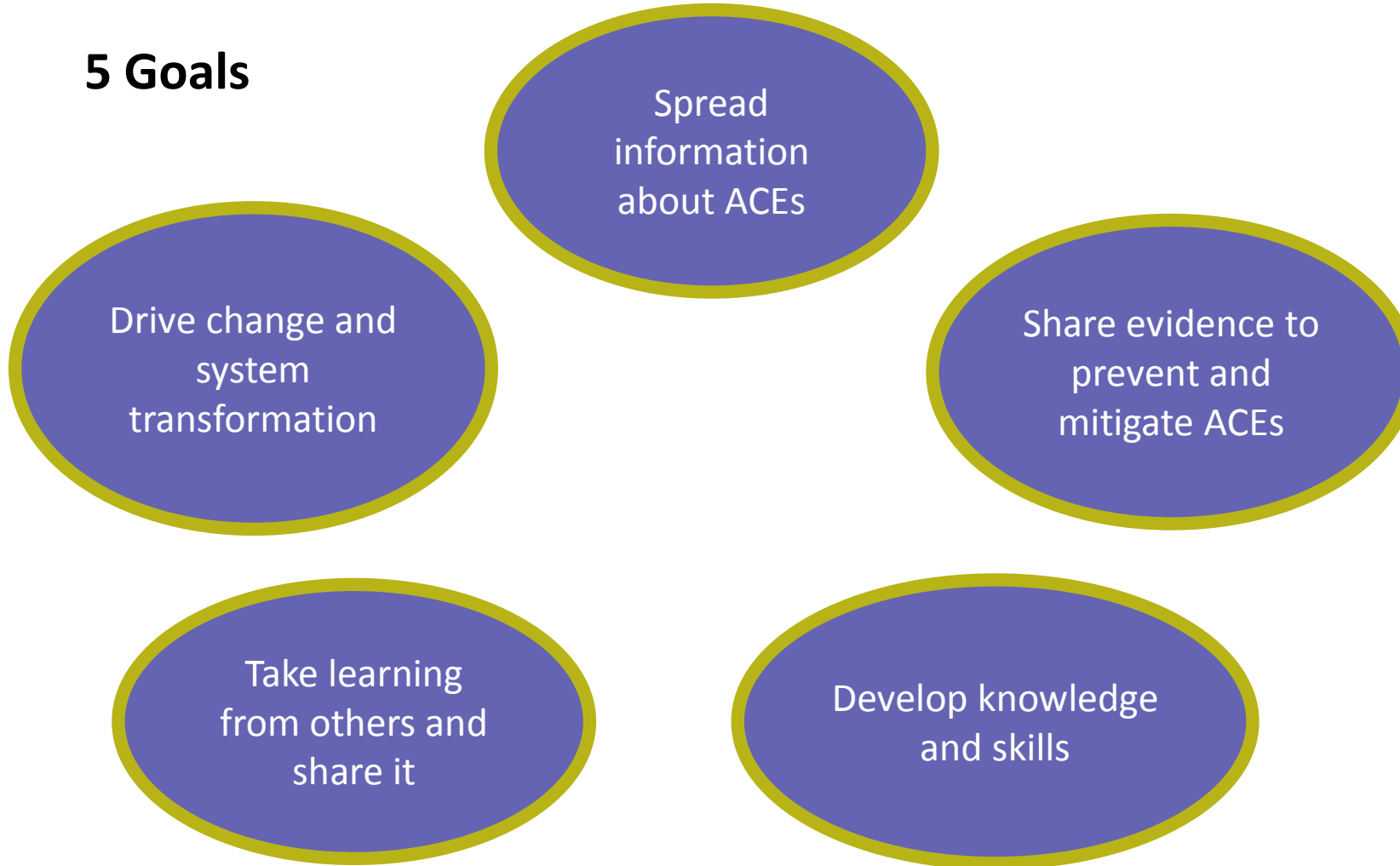


Llywodraeth Cymru
Welsh Government



What's the purpose of the Hub?

5 Goals



Hub Prospectus

Education

- ACE Awareness
- Recognising trauma, responding appropriately, developing resilience
- PATH approach to becoming an ACE-Informed School

Housing PATH Training

- Foundation
- 3-day
- Leaders

Youth

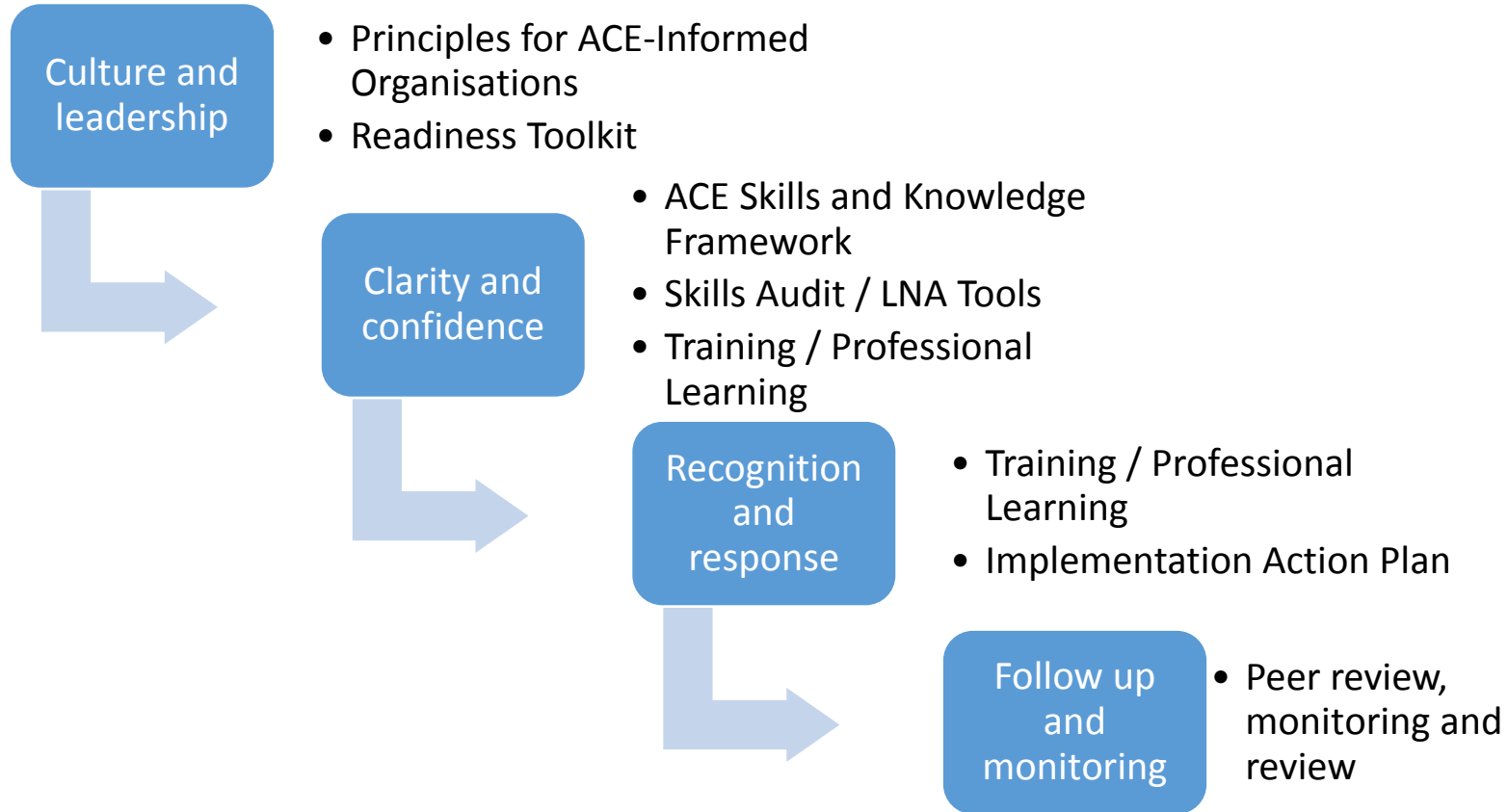
- Creating an ACE Aware Youth Workforce
- **Under development**
- ACE Aware Sports Sector

Multi-agency

Under development

- Introduction to ACEs (E-learning package)
- ACE Awareness Presentation
- 1-day ACE Informed (Train the Trainer)
- Leaders

ACE-Informed Organisations



Education

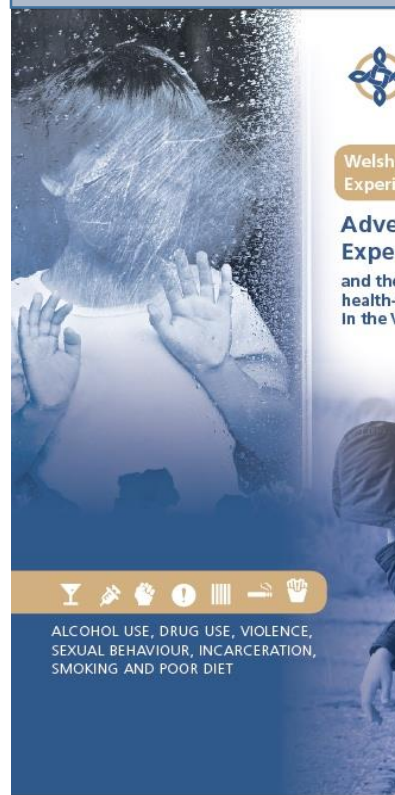
- Expert Panel
- Training developed alongside schools and Educational Psychologist Service
- **Phase 1**
- Consortia – 309 Ace Ambassadors, teachers and schools leads
- 140 Estyn inspectors and challenge advisors
- 95 Train the Trainers
- 3 secondary schools for pilot
- **Phase 2**
- 60 Ambassadors
- Delivered Phase 1 to schools who are working with EATP to support the work in this Pathfinder area, Operation Encompass

“Operation Encompass is a police and education early information sharing partnership enabling schools to offer immediate support for children and young people experiencing domestic abuse”



Camau Cynnar
gyda'n Gilydd
Early Action
Together

Opportunities for transformation



Welsh Adverse Childhood
Experiences (ACE) Study

Adverse Childhood Experiences

and the
health-

In the V



ALCOHOL USE, DRUG USE, VIOLENCE,
SEXUAL BEHAVIOUR, INCARCERATION,
SMOKING AND POOR DIET

Adverse Childhood Experiences: Breaking the Generational Cycle of Crime

Turning Understanding into Action: Summary Report

1



Authors and Contributors

Dr Kat Ford, Shaun Kelly, Jessica Evans, Annemarie Newbury, Zoe Meredith, and
Janine Roderick

Well-being of Future Generations (Wales) Act 2015

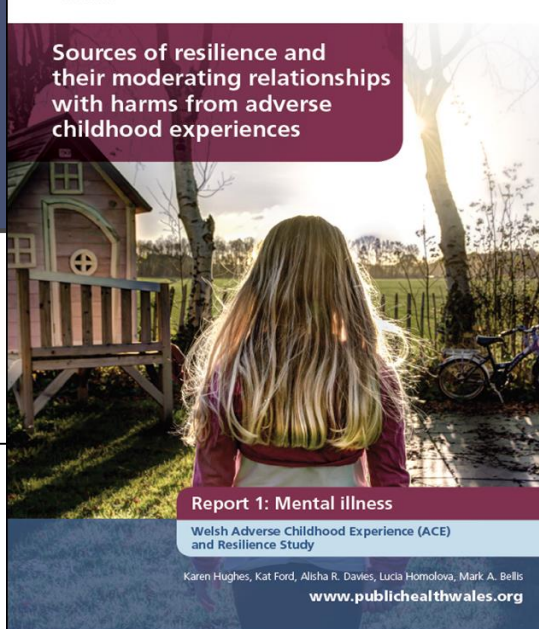
The Essentials



www.gov.wales



Sources of resilience and their moderating relationships with harms from adverse childhood experiences

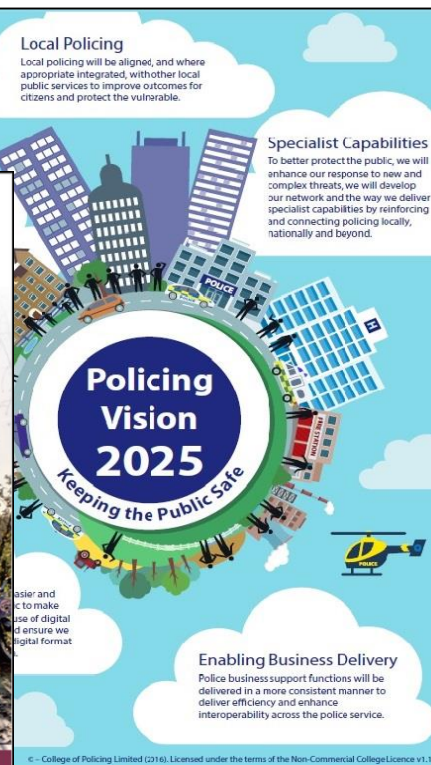


Report 1: Mental illness

Welsh Adverse Childhood Experience (ACE)
and Resilience Study

Karen Hughes, Kat Ford, Alisha R. Davies, Lucia Homolova, Mark A. Bellis

www.publichealthwales.org



Local Policing

Local policing will be aligned, and where
appropriate integrated, with other local
public services to improve outcomes for
citizens and protect the vulnerable.

Specialist Capabilities

To better protect the public, we will
enhance our response to new and
complex threats, we will develop
our network and the way we deliver
specialist capabilities by reinforcing
and connecting policing locally,
nationally and beyond.

Policing Vision 2025

Keeping the Public Safe

...asier and
...ic to make
...ize of digital
...d ensure we
...igital format

Enabling Business Delivery

Police business support functions will be
delivered in a more consistent manner to
deliver efficiency and enhance
interoperability across the police service.

© - College of Policing Limited (2016). Licensed under the terms of the Non-Commercial College Licence v1.1



Camau Cynnar
gyda'n Gilydd
Early Action
Together

Police and ACEs

61,590 Public Protection Notifications
57,364 occurrences
31% had more than 1 Public Protection Notifications

3.2%* Child Public Protection Notifications had Care and support plan

72% * of child Public Protection Notifications logged and closed

Increase risk, adversity and harm



Sexual abuse



Physical Abuse



Domestic Violence



Drug Use



Mental Health



Alcohol Abuse



Incarceration



Separation



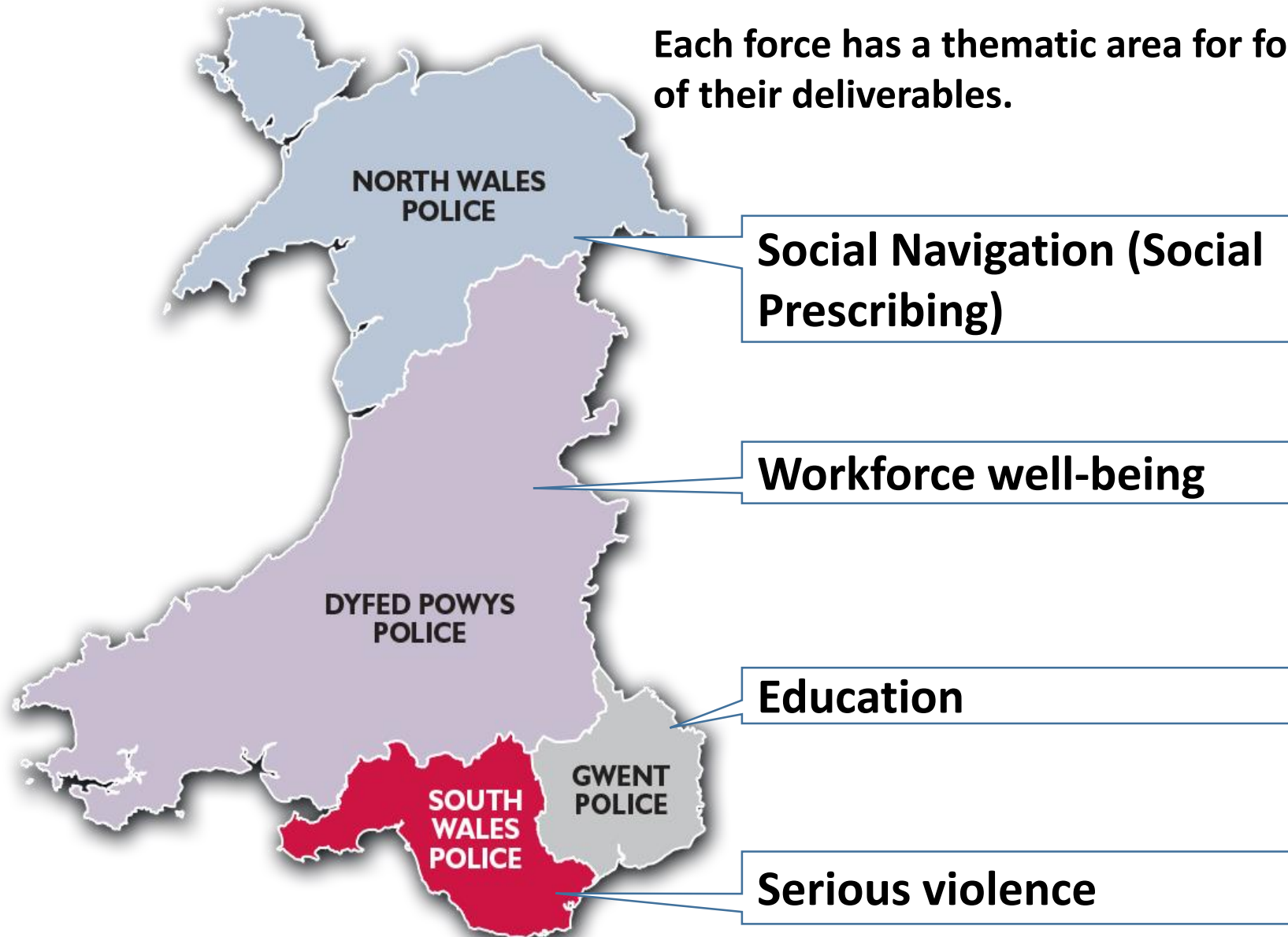
Verbal Abuse



Camau Cynnar
gyda'n Gilydd
Early Action
Together

Police Force Thematic areas

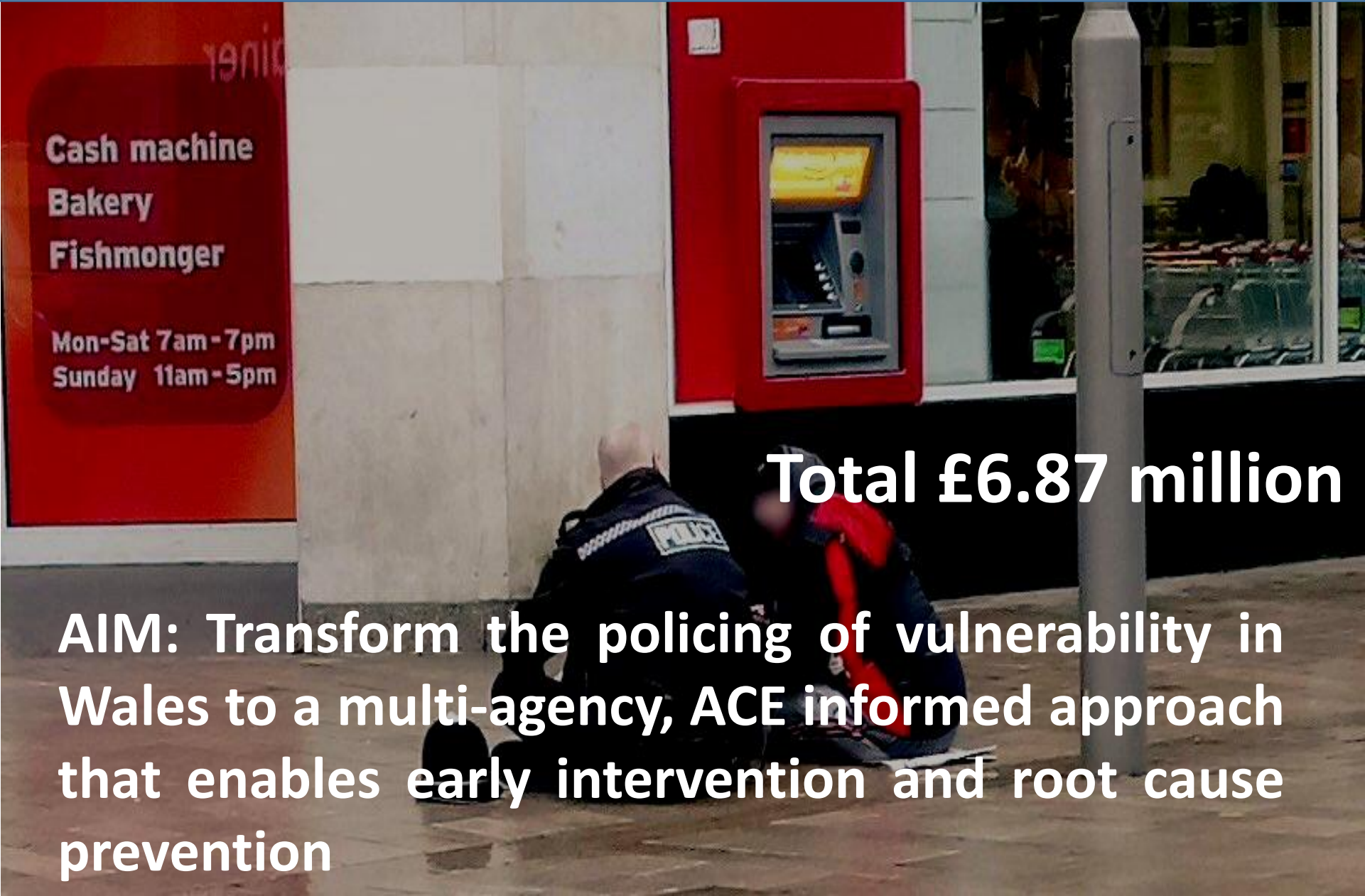
Each force has a thematic area for focus of their deliverables.





Camau Cynnar
gyda'n Gilydd
Early Action
Together

ACE Police Transformation



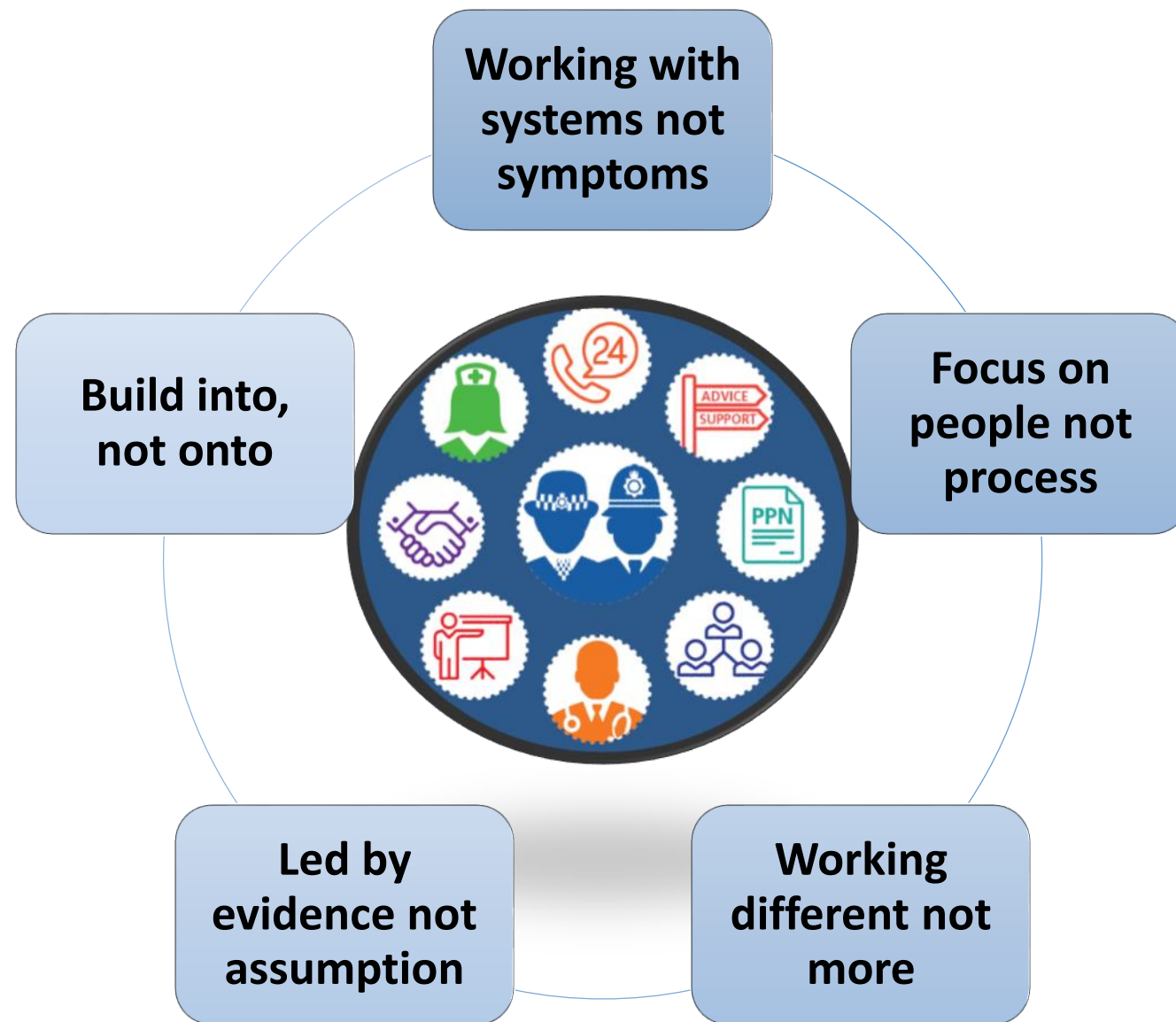
Total £6.87 million

AIM: Transform the policing of vulnerability in Wales to a multi-agency, ACE informed approach that enables early intervention and root cause prevention



Camau Cynnar
gyda'n Gilydd
Early Action
Together

Principles of Delivery





Camau Cynnar
gyda'n Gilydd
Early Action
Together

ACEs and Resilience

Protective Factors

The building blocks of resilience

One or more
stable, caring
child-adult
relationship

Equipped to
manage your
behavior and
emotions



Feel you can
overcome
hardship and
guide your
destiny

Involved and
connected



Camau Cynnar
gyda'n Gilydd
Early Action
Together

Tackling ACEs

- **Preventing ACEs**

- Early life child & parental support

↓ Child Maltreatment
↓ Violent offence as an adult

*Having experienced ACEs **does not** mean you are on an unchangeable path*

- **Building Resilience**

- Space and support where a child can temporarily escape their ACEs to develop normally

- **Always Available Adult**
- **Feel Community treats you fairly**
½ Adult poor mental well-being,
school absenteeism, heavy drinking

- **Trauma Informed Services**

- Services that understand the roots of problems they see and how to help people suffering from a history of ACEs

↓ Health service use
↓ School suspensions (83% USA)



ACPO
Association of Chief Police Officers (now National Police Chiefs Council)

BCU
Basic Command Unit

CAIU
Child Abuse Investigation Unit

CSE
Child Sexual Exploitation

DASH
Domestic Abuse Stalking Honour Based Violence

FGM
Female Genital Mutilation

MARAC
Multi-Agency Risk Assessment Conference

POVA
Protection Of Vulnerable Adults

PPN
Public Protection Notification

PPU
Public Protection Unit

PSC
Public Service Centre

VA1
Vulnerable Adult Form 1

South Wales Police Procedure

South Wales Police guidance/
supplementary document

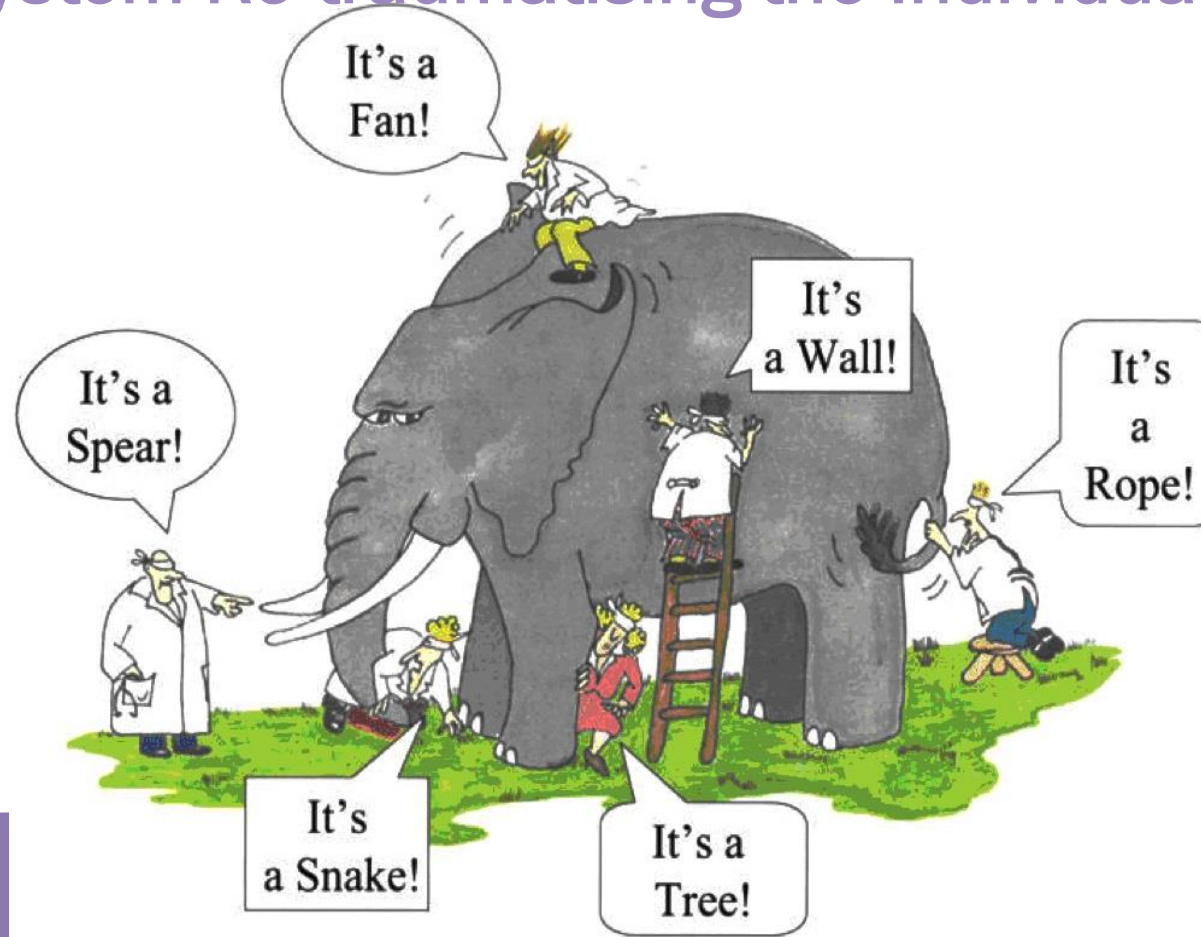
College of Policing / National
Police Chief Council
(previously Association of
Chief Police Officers)

All Wales Policies

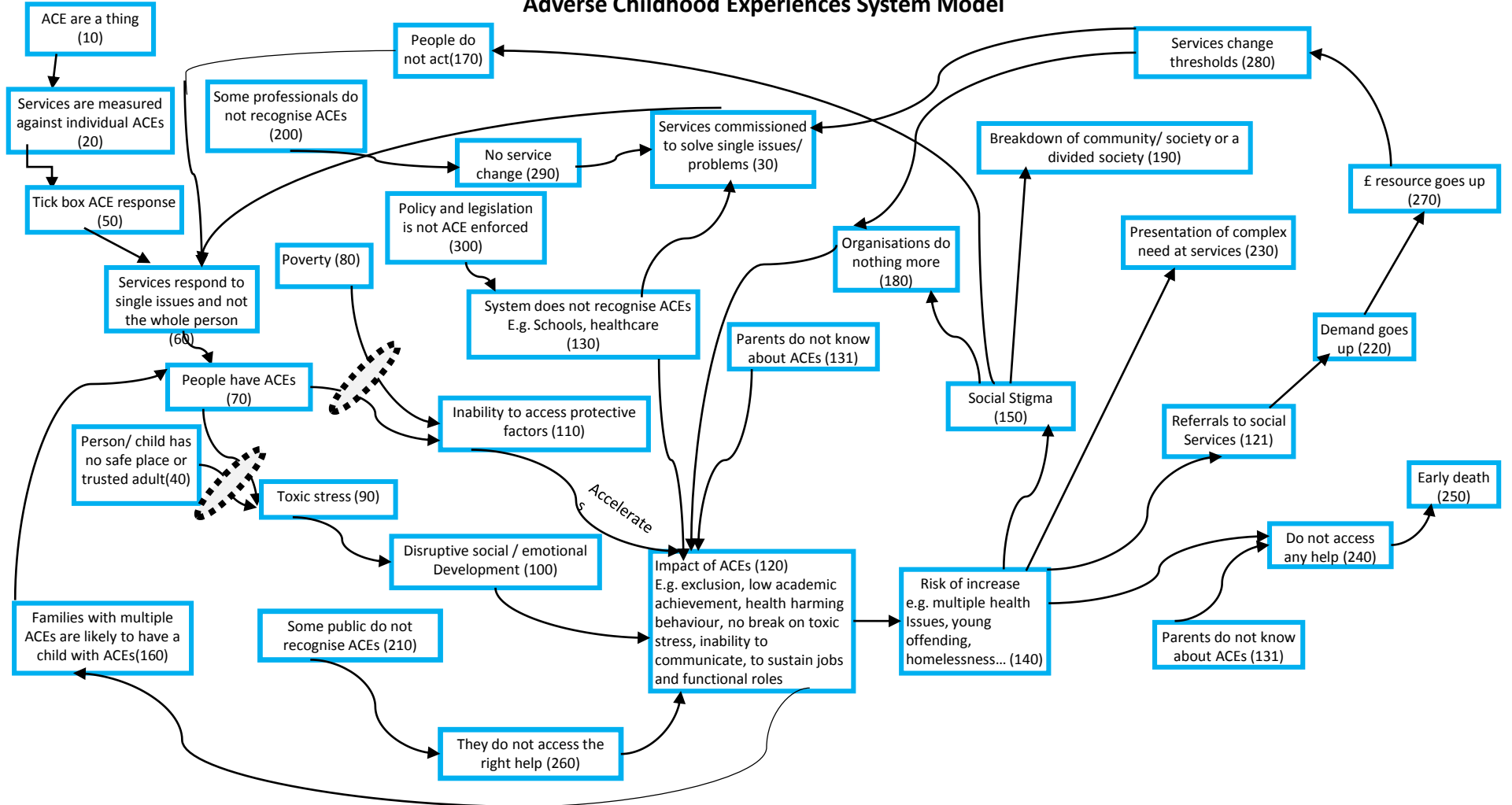
[illegible]

Correct at time of production (December 2016).

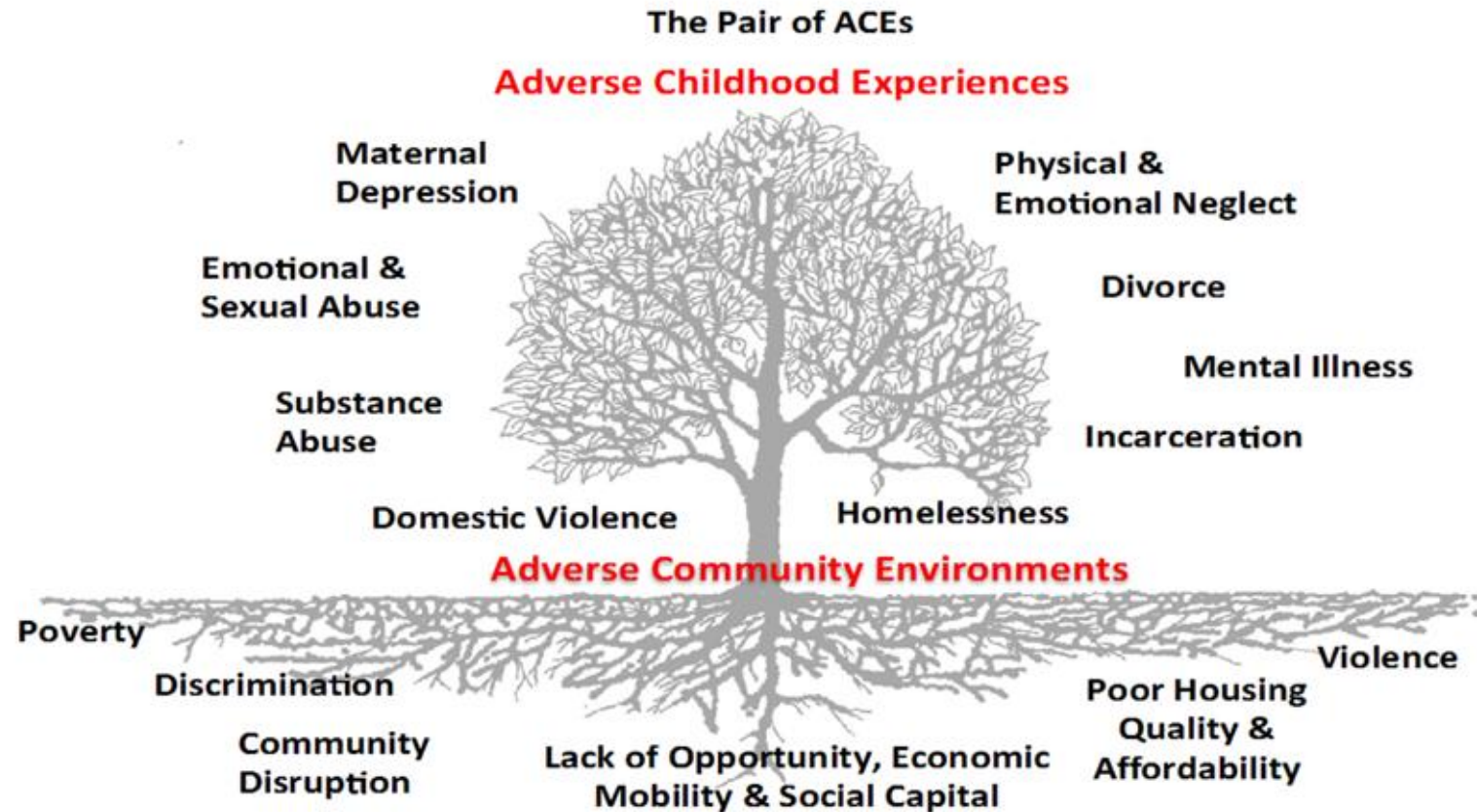
System Re-traumatising the Individual



Adverse Childhood Experiences System Model



Community Matters



Ellis, W., Dietz, W. (2017) A New Framework for Addressing Adverse Childhood and Community Experiences: The Building Community Resilience (BCR) Model. Academic Pediatrics. 17 (2017) pp. S86-S93. DOI information: 10.1016/j.acap.2016.12.011



Hyrwyddo a
Herio dros Newid



Champion & Challenge
for Change

My children
may not be 100%
OK but I am
doing an enormous
amount to help
them

Welsh video -
ACEs don't have to
be a life sentence
for future generations

ACEs
is not
destiny

I can
make
changes in
my children's
life

We can
change
our children's
lives for the
better

The gap
is some
months
to go

I still have
some negative
thought
Traps

Empower
that
do
protect

I did not realise
how much I
already did to
the girls.

I'm a
great
mum

Can
better
let

7/11
meditation
mindfulness

Understand
children
to be

Brain works
and realising
how much
trauma affects
the mind, body
and spirit.

Understanding children's
responses to stress
and how we can help
them

how to
be more
resilient
and teach
the children

ACEs are
common we're
not on our
own
"what's predictable"
is preventable



an
e
causes
ess.

be
or our
to be