



the coalfields  
regeneration trust

# Gary Porter New Leaders, New Horizons



# The Coalfields Regeneration Trust

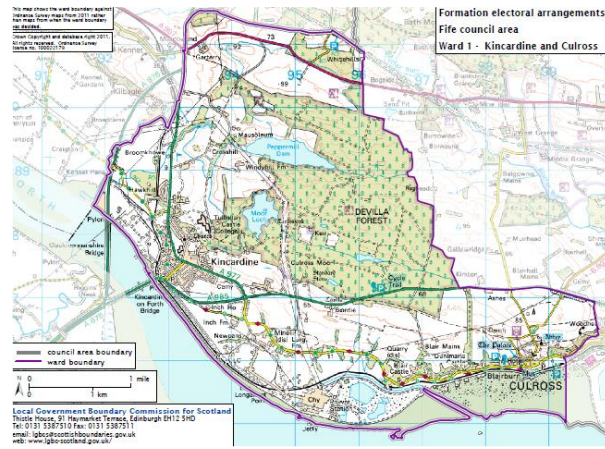
- Involved in community regeneration, community engagement and empowerment since 1999.
- Working with communities in the 5 former coalfields in Scotland:
  - Fife
  - Clackmannanshire / Falkirk / Stirling
  - The Lothians
  - Ayrshire
  - The Lanarkshires
- Community Action, Enterprise and Training and latterly Area Based Regeneration.



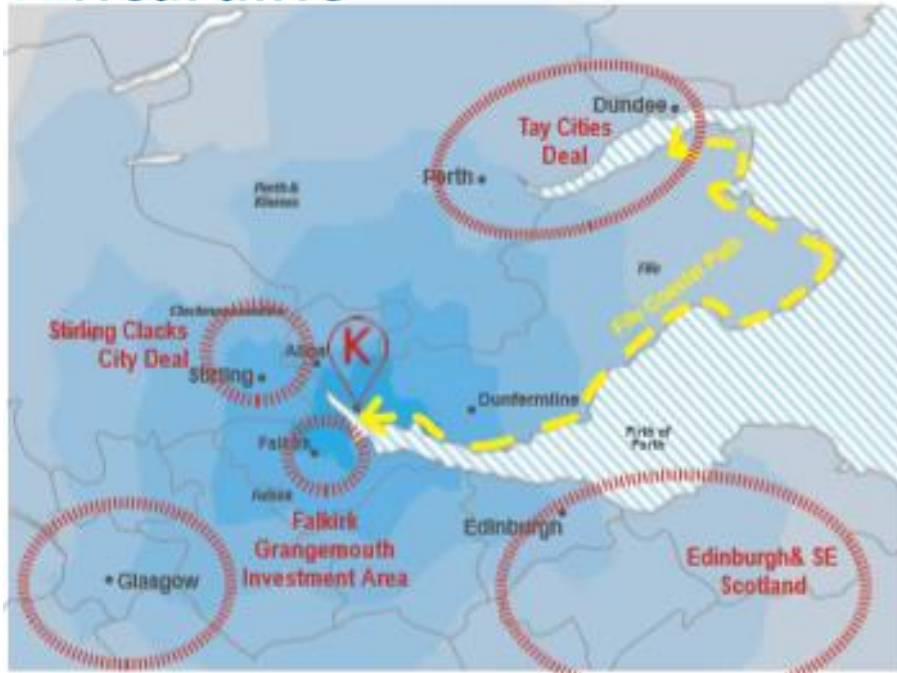


# COALFIELDS COMMUNITY FUTURES

- Local community planning and sustainable community development process that aims to encourage active citizenship and build local democracy
- 43 local community action plans with 5 more on the way.
- Revisits on first 4 previous –  
Inc – Kincardine (Charrette)







## Kincardine at a Glance

### Scottish Police College

Tulliallan Castle was built in the early 16th C. and became the Scottish Police College in 1954.

### Tulliallan Old Parish Church

Tulliallan Primary School  
Around 170 pupils, plus pre-school nursery.

### Former Kincardine Power Station

### Former Railway

The railway originally ran from Dunfermline to Alloa, with a station at Kincardine (1) until 1930, after which it was used to transport coal to the power stations.

### Town Centre

The centre retains good examples of vernacular buildings dating from the 17th-19th centuries, however, its layout was greatly altered during the construction of the Kincardine Bridge, when the A870 was driven through the central area. The Market Cross (4) shows the town centre has existed in this location since at least the 17th century.

### Waterfront

Despite Kincardine's beginnings in the shipping and salt industries, the town is now cut off from the waterfront by the railway. There is a level crossing (2) which allows access to the waterfront and old piers, as well as the Fife Coastal Path, which can also be accessed at (3).

### Ferry Pier

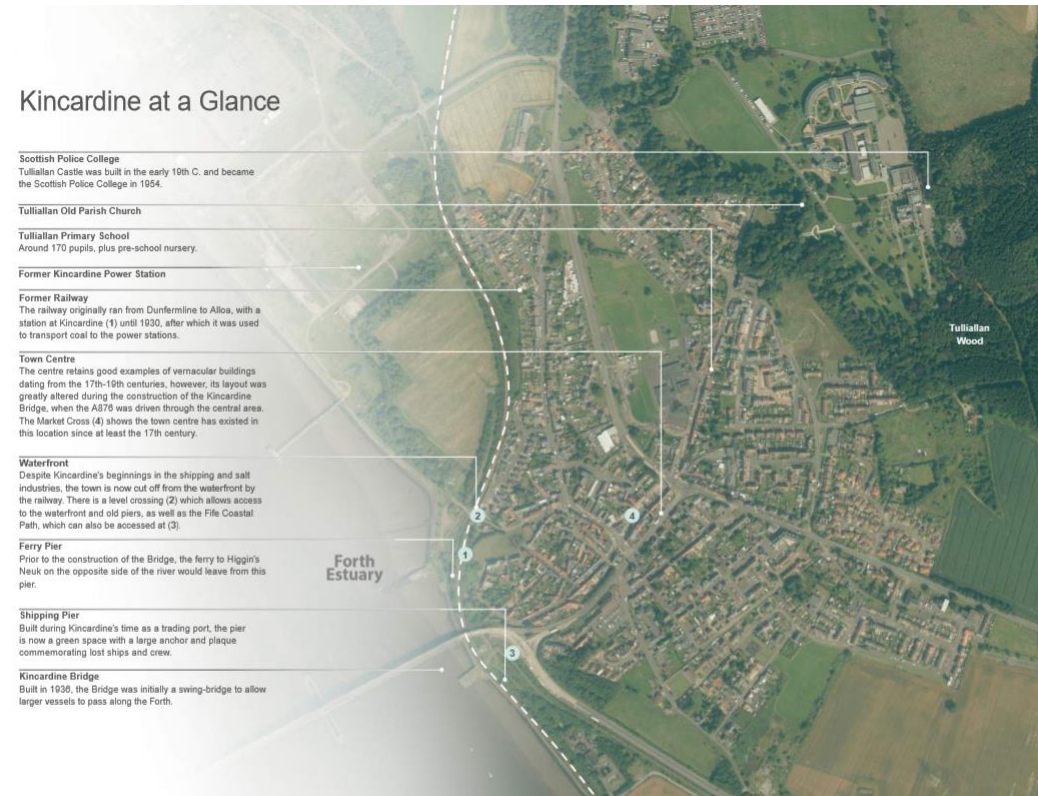
Prior to the construction of the Bridge, the ferry to Higgin's Neuk on the opposite side of the river would leave from this pier.

### Shipping Pier

Built during Kincardine's time as a trading port, the pier is now a green space with a large anchor and plaque commemorating lost ships and crew.

### Kincardine Bridge

Built in 1936, the Bridge was initially a swing-bridge to allow larger vessels to pass along the Forth.



Kincardine is framed between two significant road crossings of the River Forth and has been host to two large scale coal-fired power stations, now both decommissioned. It has engaging historical narratives from its history of seafaring, shipbuilding and mining



# #GoForthKincardine



Kincardine has wonderful natural resources, but would benefit from improved facilities and connections to these.



Kincardine is an historic Fife coastal settlement with Burgh status signified by its 15th century Mercat Cross - but there is virtually no interpretation of its heritage.



Devilla Forest has an extensive network of paths linking archaeological sites, leading to views of the Forth valley - there is lots of opportunity to extend access and facilities.



The High Street is at the heart of the town but it is dominated by buses and cars looking to park.



Trunk roads through the town centre are no longer as busy due to the construction of additional bridges.



Kincardine has a railway line ... but no station.

## Pre - Charrette Engagement

In collaboration with local teachers, the WAVEpartice team also ran a collective schools creative workshop with pupils from Tulliallan Primary School and Dunfermline High School.

They used a large vinyl floormap of the area to aid discussion about the town, and encouraged pupils to place stickers on this - gold stars on the places they liked, and red dots for the places they thought needed improvement.

Pupils were also invited to write a 'postcard from the future' to their current selves from their imaginary art in 10 years time - envisioning how Kincardine could have changed within the intervening 10 years, and how these changes were implemented. The pupils had lots to say about their opinions and future vision for the town, and came up with some impressive insights and ideas.



**Gold Star Areas**  
Gold stars were used to mark significant places, organisations or something in the town that works particularly well. These included:

- Devilla Forest
- Kincardine Bridge
- Tulliallan Primary School



**Red Dot Areas**  
Red dots were used to mark areas that need improving. These included:

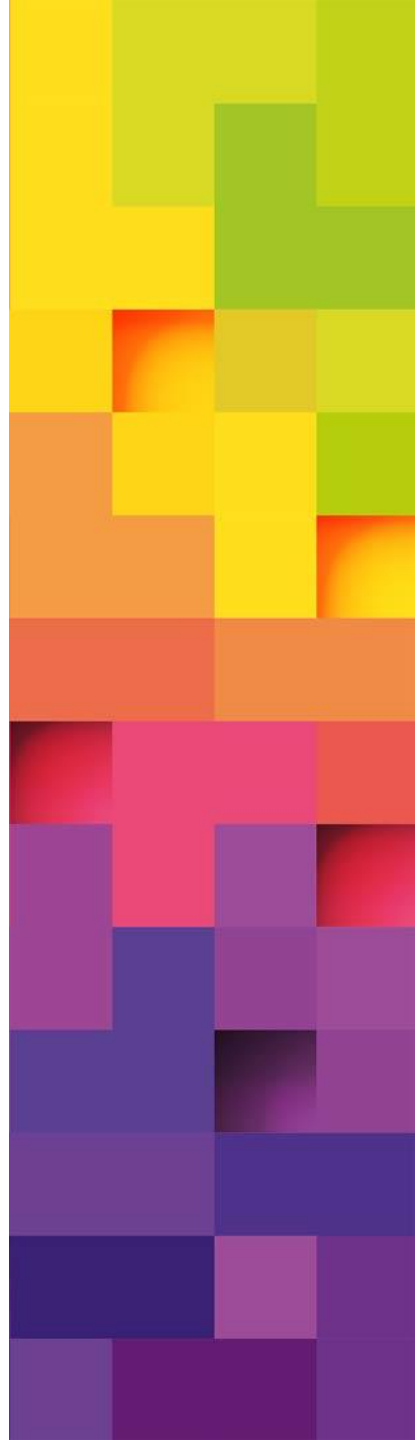
- The High Street  
needs more activity & variety, a desire for more places for young people to meet such as a coffee shop which stays open later in the evening
- More / Improved places to play sport particularly football & swimming
- Bus stops difficult for young people to access nearby areas without a car

"Not enough things for the youngsters to do"

"Kincardine is a forgotten village"



**NEW HORIZONS**



# NEW LEADERS



Traditional Methods –

Community Council – Chair / Leader ?

School Head – Leader ?

Religious Centres – Leaders ?

Local Authority / Cllrs – Leaders ?

Charrette –

Young Male 25 Year old business owner – Leader

Previously Homeless Female – Leader

85 Year Old local Historian – Leader

! NEW LEADERS !

Concept is the same in terms of leading on community and place, but the people, groups and organisations differed.

# Thank You

[www.coalfields-regen.org.uk](http://www.coalfields-regen.org.uk)

The Coalfields Regeneration Trust is a Charity registered in England and Wales (No. 1074930), a Charity registered in Scotland (No. SCO39277) and a Company Limited by Guarantee registered in England and Wales (No.3738566).

