



# **‘Healthy Housing’**

## **Building foundations in South Lanarkshire**

**Matt McNulty–Strategy Coordinator (Housing)**  
**Evelyn Devlin – Service Manager, Transitions**

# Overview

- Background
- Integrating housing, health and social care
- Transitions - new models of care
- Strategic Commissioning Plan 2019-2022

# South Lanarkshire

- 5<sup>th</sup> largest local authority area in Scotland:
  - 318,000 people
  - 148,000 homes
- Covers an area of 1,772km<sup>2</sup>
- Four diverse localities
- 31,600 social rented homes (21.5% of all)
- Per year +1,000 households of people aged 60+



# Existing foundations

- Worked in partnerships to deliver:
  - Joint Futures – closure of long-stay hospitals
  - Supporting People
  - Reshaping care for Older People (RCOP)
  - Amenity Upgrade and Conversion (Change Fund)
  - Local Housing Strategy (2012-17)

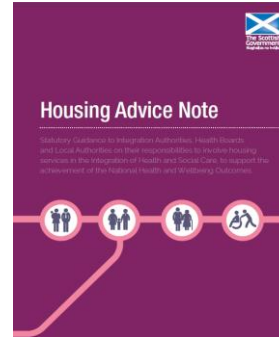
# Integration and strategic planning



Dec 2014



May 2015

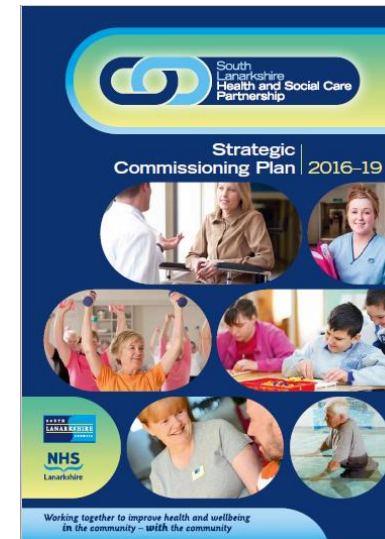


Sep 2015

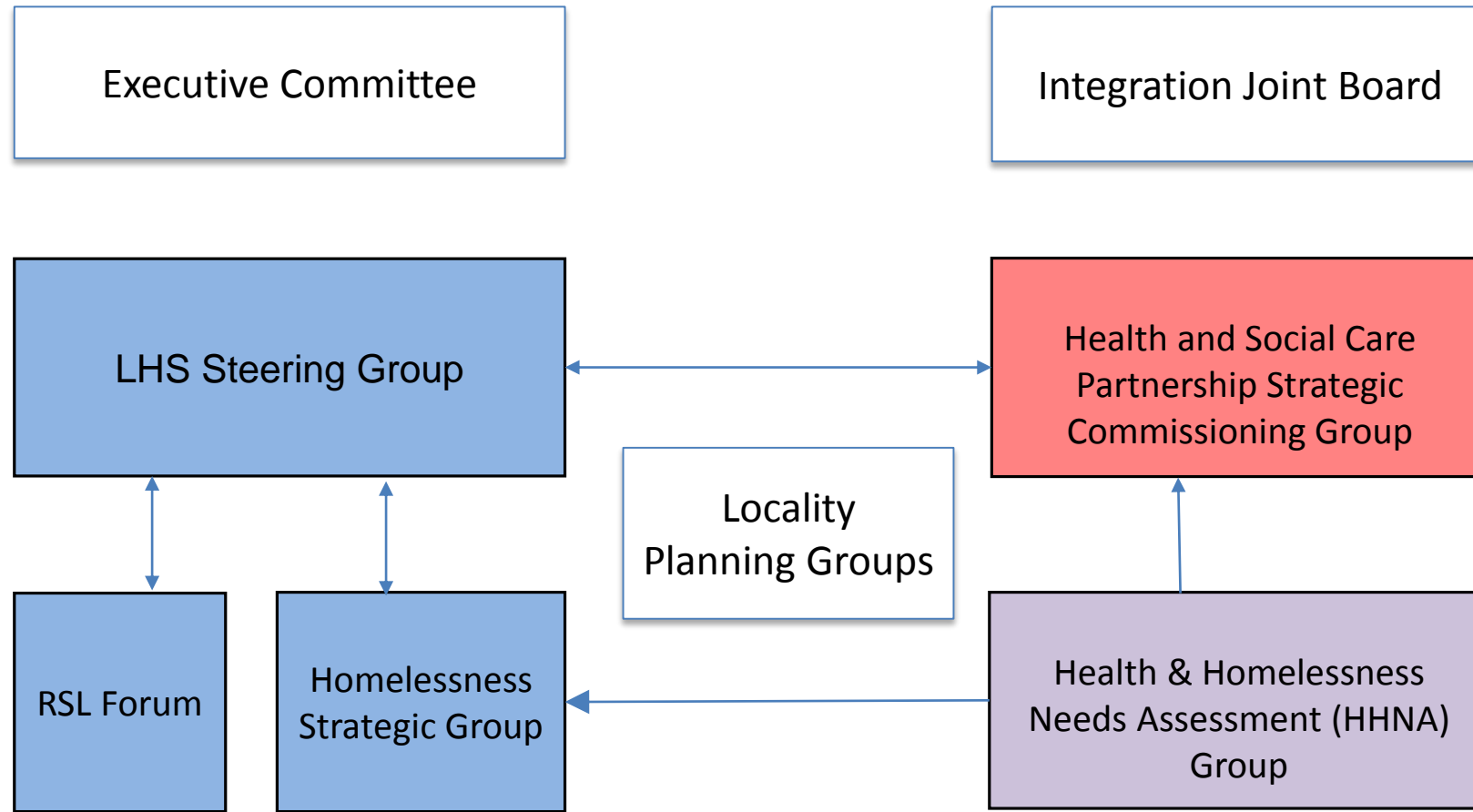
April 2016

## Housing Contribution Statement (HCS)

- Set out arrangements for the “must be delegated” housing functions
- Set out an overarching statement of how the Integration Authority intends to work with housing services, whether delegated to it or not, to deliver its outcomes.



# Structures and groups



# Representation and Governance

- RSL Forum provides opportunity for the “non-commercial providers of housing” to share views
- LHS Steering Group collates views across housing sector for South Lanarkshire
- LHS Steering Group Chair agreed as the ‘Housing’ representative at Strategic Commissioning Group (SCG)
- RSL partners noted that SCG has an ‘open seat’ for RSL representative, as required
- Housing providers input into Locality Planning Groups

# Housing related challenges

- Increasing housing (and support) demands from an ageing population
- Meeting affordable housing needs and addressing ongoing homelessness pressure
- Reviewing models of housing that can prevent the need for higher tariff care
- Early-warning and joint planning to address delayed discharge
- Understanding the costs and risks associated with complex needs, health and homelessness



# Early focus

- Smooth transition of core functions: adaptations service
- Working in partnership to complete a Health and Homelessness Needs Assessment
- Developing the multi-agency Hospital Discharge Hub
- Increasing supply of affordable housing suitable for older people and people with particular needs (new build and amenity programme)

# Delivering suitable, affordable, and sustainable homes



- 2 new sheltered housing complexes
- Amenity housing design with convertible loft-space
- Accessible flats suitable for older people
- Potential housing investment £140m over 5 years (2019-2024)

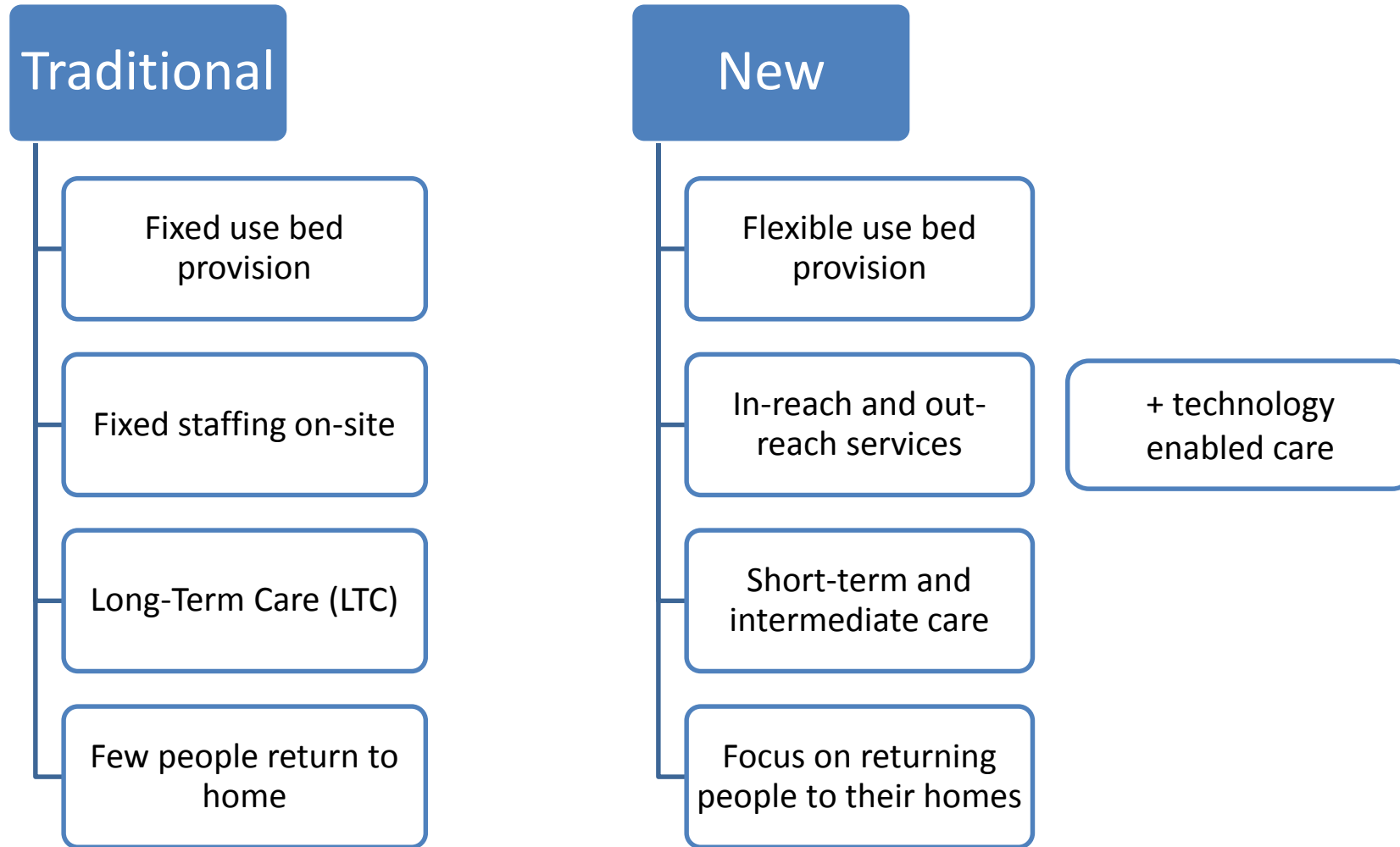
# Longer-term shared focus

- Dealing with projected increase in demand for housing and related services from an ageing population
- Building effective foundations for locality planning
- Transitioning to new models of care whilst continuing to meet current service commitments
- Supporting people with severe complex needs to sustain settled homes

# The transition framework

- Strategic Commissioning Plan 2016-19 priority:  
“intermediate care to reduce reliance on hospital and residential care”
- Council Plan priority:  
*“Older People will live more independently and choose what matters most about their care and support”*
- Focus on developing a new model for care that supports independent living
- £18m capital funding to invest in future care facilities

# Transforming models of care



# South Lanarkshire care facilities

## Rutherglen & Cambuslang

- David Walker Gardens (50)

## Hamilton/Blantyre

- Kirkton House (30)
- Canderavon (47)
- McWhirters (30)
- Dewar House (16)



## East Kilbride

- Meldrum Gardens (35)
- McKillop Gardens (37)

## Clydesdale

- McClymont House (27)

# Bed-based Intermediate Care Project

- 22 IC Beds across 3 Council care homes
  - Meldrum Gardens (East Kilbride) – 7 beds
  - McKillop Gardens (East Kilbride) – 7 beds
  - Canderavon House, Stonehouse – 8 beds
- Multi-professional referral hub
- Mostly older people “step-down” from hospital
- Independently reviewed as contributing effectively to 4 of the 9 National Health & Wellbeing Outcomes

## Liz Adamson – Senior Social Care Worker

“The introduction of transitional beds has been a great experience for staff.

“They enjoy building a relationship with people, helping them get back on their feet and returning to their own homes – there is a lot of job satisfaction.

“Staff like to learn and to improve the care and support they deliver.

“They really enjoyed the additional training to successfully support transitional care.”





## Dr Rebecca Howie GP



“My experience of the transitional beds in Canderavon House has been very positive, it puts us in a better position to really assess a patient’s overall wellbeing.”

“Patients do not want to be in hospital they want to be at home and you can see the improvement in them as they are being supported towards that goal.”

“Even if the decision is that an individual is unable to return home that decision is being taken in a calmer environment, where both they and their relatives can consider all the options.”

# Hamilton Locality Profile Assessment

## Drivers

- **Demographic**
  - Largest overall population of 107,000
  - 65+ make up 29.4% of total locality population
  - 85+ population growth most significant at 4.1% per annum
- **Health Needs**
  - Highest rate of emergency hospital admissions
  - 131.5 per 1,000 of 65+ population classified as frail
  - 3% of the population living with multiple long term health conditions
  - Highest mental health prevalence (including dementia)
- **Assets**
  - 3 of the 4 oldest care homes are within this locality



# Four Components to Model

Transitional Support  
Hub

Technology Enabled  
Properties and  
Mainstream Housing



Centre for Excellence,  
Skills and Learning

Community  
Regeneration

# Strategic Commissioning Plan 2019-2022

- Modernising facilities and new models of care
- Promoting telehealth and telecare
- Addressing Health and Homelessness Needs - rapid rehousing and Housing First
- Embedding the housing contribution statement



# Thanks for listening

## Any questions?

For further information contact:

[Matthew.mcNulty@southlanarkshire.gov.uk](mailto:Matthew.mcNulty@southlanarkshire.gov.uk)

[Evelyn.Devlin@southlanarkshire.gov.uk](mailto:Evelyn.Devlin@southlanarkshire.gov.uk)