



**SUSTAINABILITY  
ACTION**  
Our NHS Our People Our Planet

# Adaptation to Climate Change

**Caitlin Hamlett**

**Sustainability Manager, NHS National Services Scotland**



**Scotland's climate is warming and we are facing more extreme weather and rising sea levels. Limiting global warming to 1.5°C will require rapid, far-reaching and unprecedented changes in all aspects of society. More work is urgently needed to prepare the personnel, the systems and the facilities of the NHS, as well as other institutions involved in healthcare, for the implications of unavoidable climate change. This session will consider what NHSScotland is currently doing to assess the developing impacts of climate change, and what more needs to be done to ensure we are properly prepared...**



# Why adapt?

- **British health systems 'unprepared for devastating effects of climate change'**  
**The Guardian 16 March 2016**

Leading health bodies urge ministers to be 'properly prepared' as extreme weather events such as flooding or heatwaves become more common



**UK Health Alliance on Climate Change urged ministers not to “wait for disaster” before acting.**





**There is alarming evidence that important tipping points, leading to irreversible changes in major ecosystems and the planetary climate system, may already have been reached or passed.**



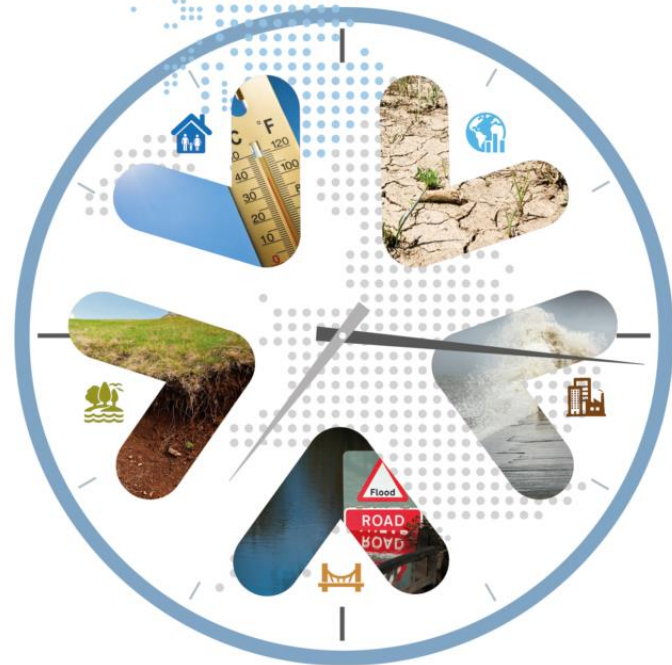
# Impacts on Health and Social Care Systems – High Risk



UK  
2017 | Climate  
Change  
Risk  
Assessment

## UK Climate Change Risk Assessment 2017 Evidence Report

Summary for Scotland



ADAPTATION TO CLIMATE CHANGE

### Glasgow's major roads, railways and hospitals at risk from climate change - study

Exclusive: Storms, flooding and heatwaves could severely impact the city by 2050, an in-depth study reveals



▲ Up to 1.8 million people in the Glasgow area could be affected by regular heatwaves and heavy winter flooding in future, according to the study. Photograph: Henri Martin/Alamy

- Flooding and high temperatures pose the greatest risks to people and the greatest need for action in the next five years.
- These risks interact across multiple levels – communities, buildings, health systems and individuals



# Climate change adaptation for the health and social care system is two-fold:

- Climate change could negatively impact the physical and mental health and wellbeing of the UK population. The health and social care system needs to be prepared for different volumes and patterns of demand.
- Climate change could impact the operational delivery of the health and care system. The system infrastructure (e.g. buildings, communications, emergency service vehicles, models of care) and supply chain (e.g. fuel, food, care supplies) need to be prepared for and resilient to weather events and other crises.





# UK Climate Change Risk Assessment 2022

- Ch 5 risk of climate change to the health and social care sector
- Barriers identified e.g. lack of knowledge / awareness of local impacts, need mandated action
- Better communication of climate risks is needed for managers and frontline staff

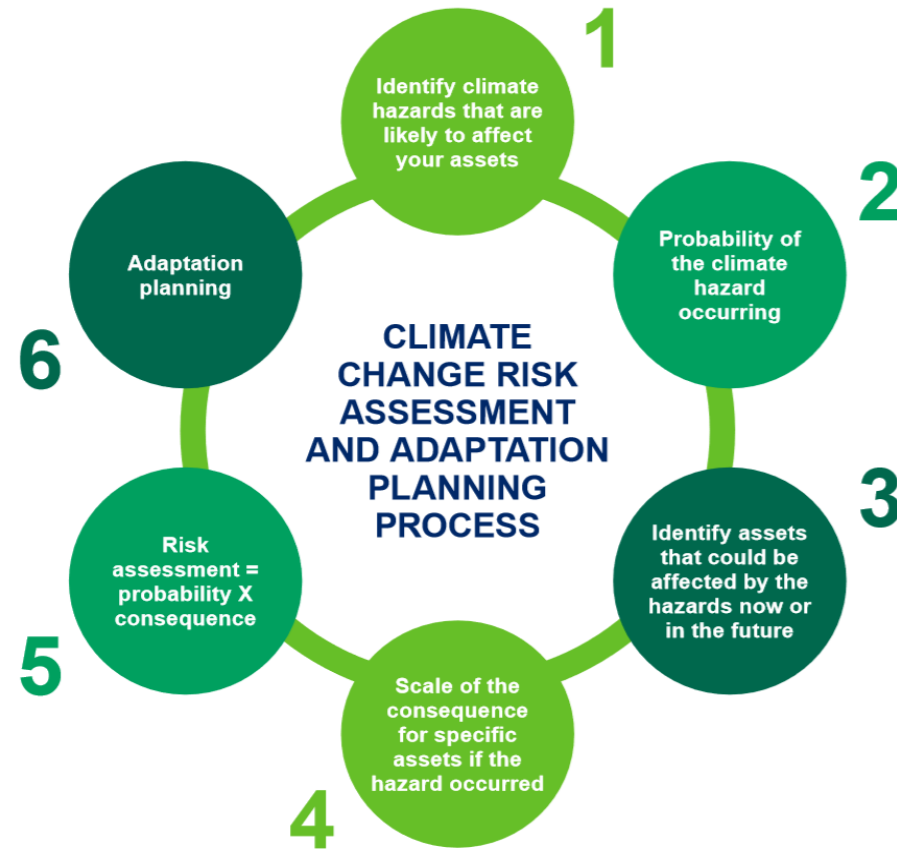


# What have we done?





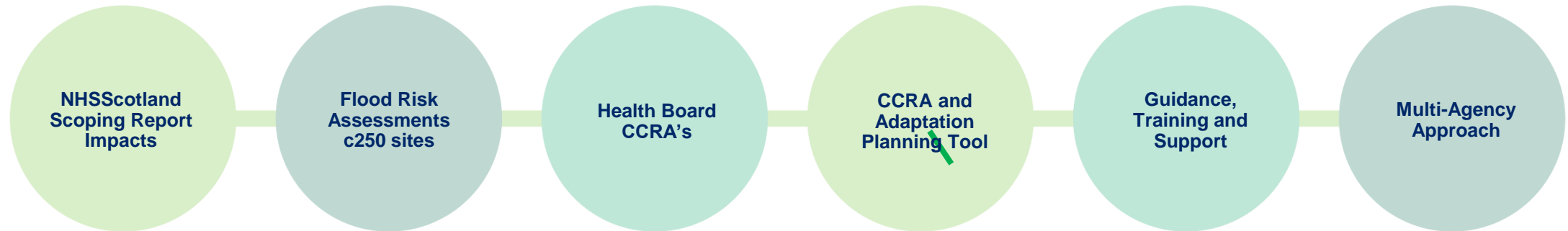
# Climate Change Risk Assessment and Adaptation Planning



*Understand climate risks and prepare action plans*



# Progress to date



***Work in partnership***



# CCRA and Adaptation Planning Tool for Healthcare Assets

NHS Scotland  
Climate Change Risk Assessment & Adaptation Planning Tool

Guidance

The following worksheets will allow you to assess the climate change risks to your health care assets and to identify adaptation measures to help manage these risks. Impacts on these assets will have implications for service delivery and this should also be considered when using the tool.  
Note: Many of the cells within this workbook are locked for editing and are automatically populated.

Dashboard

When viewing the Dashboard you will need to select your board from the drop down menu as marked in the image, this ensures the correct filters are applied and new data is associated with the correct board.

If you wish to view a summary of both existing and future risk please click here.

If you wish to view and update the adaptation plan for any identified risk then please click here.

To input new data into the tool please click here.

To update existing information within the database please click here.

To remove existing information from the database please click here.

The login command is for database management purposes, it will unlock the database for manual edits, in order to do this the user will require a password.

NOTE: The password should not become openly available as it leaves the workbook in a state which could easily be broken.

Generate New Record

The screenshot shows a dashboard titled 'NHS Scotland Climate Change Risk Assessment & Adaptation Planning Tool'. It features a dropdown menu for 'Please select your Board:' with 'NHS 24' selected. Below this are buttons for 'View Risk Summary', 'View Adaptation Plan', 'Generate New Record', 'Update Record', 'Remove Record', and 'Login'. The 'Login' button is under the 'Database Management:' section.



# Climate Change Risk and Vulnerability Web-based GIS Assessment Tool

The screenshot shows a web browser window displaying the NHS Scotland mapping tool. The URL is <https://www.tellus-toolkit.com/nhsmap/map.php>. The interface includes a navigation menu with 'Home', 'Intro', 'Maps', 'Help', and 'Copyright'. A search bar contains 'Grampian'. The user is logged in as 'nhsscotland'. The map displays the Grampian region, showing various risk layers for river depth, river extent, river velocity, health boards, and a mask. The legend on the right side of the map provides a key for these layers, with color-coded indicators for low, medium, and high likelihood. The map also includes a scale bar (0 to 20 km) and a north arrow.

The NHSScotland mapping tool assesses the risk and vulnerability of healthcare assets to climate change impacts across Scotland.

The mapping tool is designed as a platform to display spatial data and provide information to improve understanding of how climate change impacts will effect the NHS estate and wider community. It supports the facilitation of climate change adaptation planning and decision-making and aids spatially targeted adaptation responses.

Choose the [Maps](#) link above to list available map layers.

© Crown copyright and database rights 2019 Ordnance Survey. Terms of Use



# Prof. Richard Kingston

**University of Manchester**



# Angus Petite

**JBA Consulting**



# What's next?

