

ONHS Strategic Interventions

NHS Greenspace for Health Partnerships

- Managing and developing NHS greenspace for staff, patients and visitors

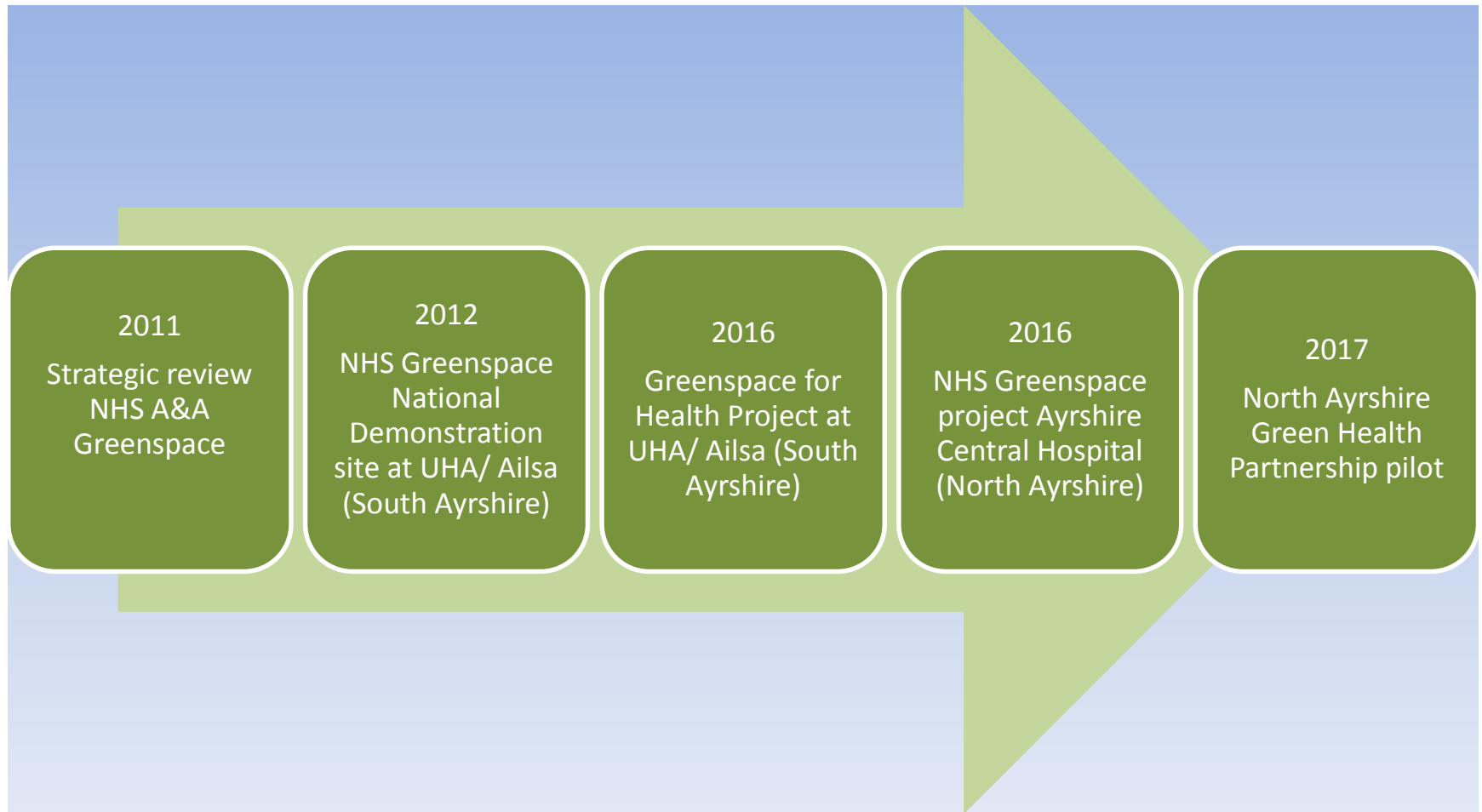
Local Green Health Partnerships

- Developing area wide co-ordinated cross -sector action to upscale and mainstream green exercise

Green Infrastructure for Well-being Partnerships

- Developing partnerships to maximise the health benefits from planned investment in new green infrastructure

Our story so far in Ayrshire & Arran....



The Untapped Potential of NHS Greenspace

Health and Wellbeing

- ✓ Views from hospital buildings
- ✓ Outdoor rehabilitation and recovery programmes
- ✓ Informal use
- ✓ Green prescription
- ✓ Therapeutic gardening
- ✓ Employability and volunteering
- ✓ Active travel

Supporting Sustainability

- ✓ Enhancing biodiversity
- ✓ Contribution to biomass schemes
- ✓ Sustainable drainage
- ✓ Active travel





<https://www.youtube.com/watch?v=78JCeh0my08&feature=youtu.be>

<https://www.nature.scot/green-ways-health-case-studies>

Green Health Referral



TCV
The Conservation Volunteers

GREEN GYM™

at University Hospital Ayr & Ailsa
Wednesdays 10am - 1pm
Also... 5 Ways Well Green Gym
Fridays 10am - 1pm

Join in, feel good

From sowing seeds to planting trees, we have practical conservation tasks running every week to help you get active and improve the Hospital Greenspace. The Green Gym is a free drop in and drop out service and open to all - including patients, staff, visitors and the community.

For more information, contact David Meechan on 01292 885946 or 07773 200525 or d.meechan@tcv.org.uk

Registered in England as a limited company (276440) and as a charity in England (267190) and Scotland (SC038822). Registered Office: South Street, Huddersfield, West Yorkshire HD6 2BE





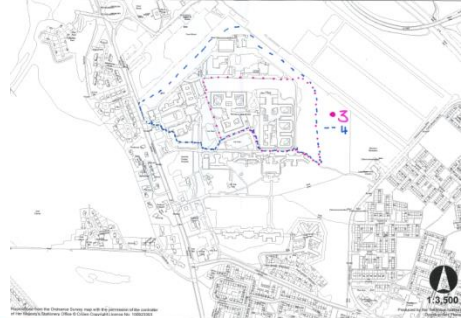
Roll out the learning.....

We want to develop our natural resources on the Ayrshire Central Hospital site in Irvine to help improve the health and wellbeing of everyone who visits.

One of the ways we want to do this is by introducing woodland walks. Come along to one of our events and tell us your view on how we could improve the land for visitors, staff and patients.

Come along to Woodland management consultations on:

- Tuesday 28 June
12noon until 2.30pm
in the Gallery Dining Room,
Ayrshire Central Hospital,
Irvine, KA12 8SS
- Wednesday 29 June
12noon until 2.30pm
in Castlepark Community Centre,
Castlepark, Irvine KA12 9LQ
- Friday 1 July
12noon until 2.30pm
in Woodland View's main reception,
Ayrshire Central Hospital,
Irvine, KA12 8SS



We will have 2 large maps of the site and you will have the opportunity to comment on them and complete a short questionnaire if you wish.

Follow us on Twitter @NHSAA
Find us on Facebook at www.facebook.com/nhsaa
All our publications are available in other formats
We are website: www.nhs.uk





Scottish
Natural
Heritage

The
Conservation
Volunteers

NHS A&A
Public Health
AHPs
Nursing

NAC
Community
Development
Cultural
Development
Active travel

The Ayrshire
Community
Trust
Arran CVS

Ayrshire
College

Scottish
Forestry

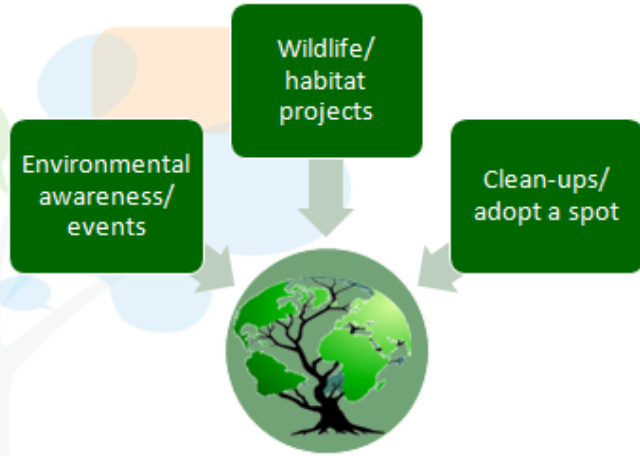
Scottish
Wildlife
Trust

KA Leisure

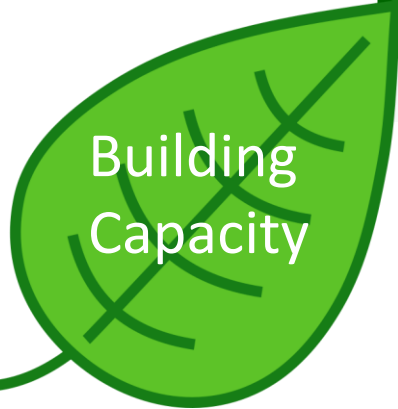
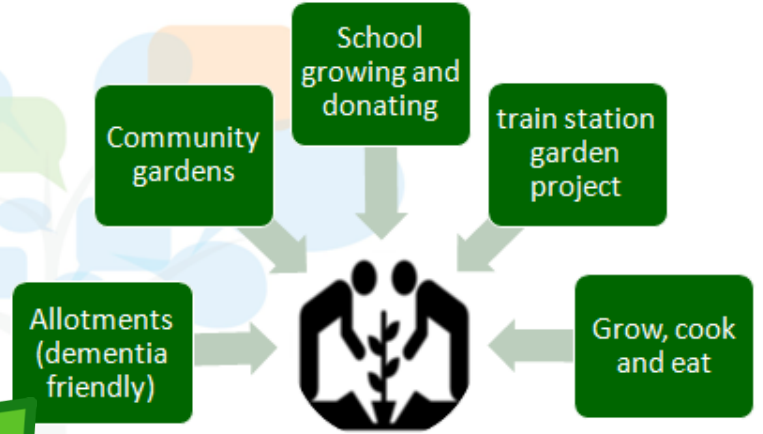
North
Ayrshire
Green Health
Partnership



Green Health Fund: Conservation



Green Health Fund: Growing



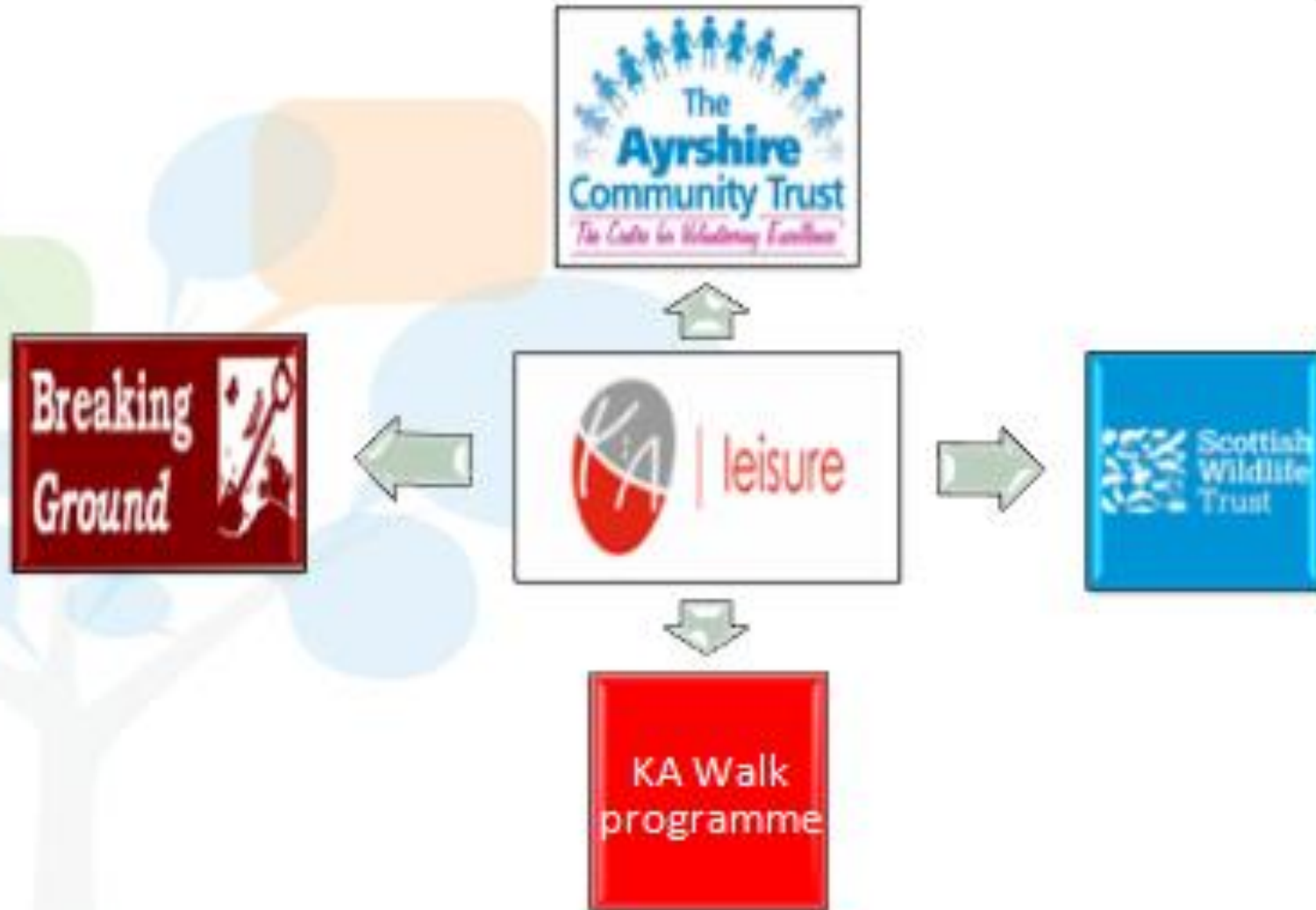
Green Health Fund: Walking & Cycling



Green Health Network



Green Health Referral





Communication Plan

North Ayrshire Green Health Partnership

Spending time in nature is good for the body and mind

Green Health Week

22nd – 28th April



TALKING HEADS

North Ayrshire Green Health Partnership
Update Blog – June 2019



North Ayrshire

DrEAM

Drop everything and **MOVE**

active, involved, inspired

North Ayrshire Green Health Partnership

Spending time in nature is good for the body and mind

Follow us on Twitter and Facebook: @NAGreenHealth

Visit: www.nagreenhealth.org.uk

Scottish Natural Heritage
 Dualchas Nàdair na h-Alba
nature.scot



**Thanks
for
Listening
....thoughts?
comments?
Queries?**

