



**Sustainable
Healthcare
Coalition**

TRANSITIONING HEALTH SYSTEMS TO SUSTAINABILITY

Dr Fiona Adshead

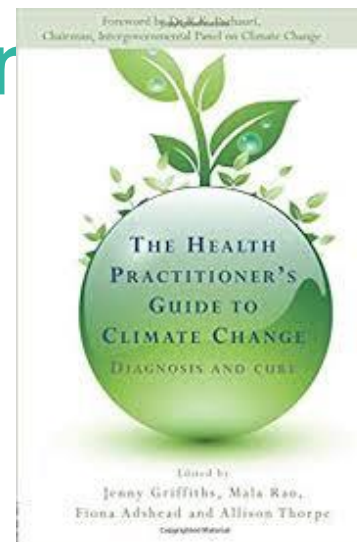
NHS Scotland Sustainability Conference |
Edinburgh | 24th September 2019

A Health and Sustainability Journey



Climate Change Act 2008

 Sustainable Development Unit



Transitioning Health Systems to Sustainability | Edinburgh | 2



Health and Climate Change: Systems in Transition

Climate Change is a Health Emergency



"Climate change is the biggest global health threat of the 21st century."

See The Lancet Commissions page 1693



"The Planet is Sick – and we all need to work together to ensure the health and wellbeing of future generations"

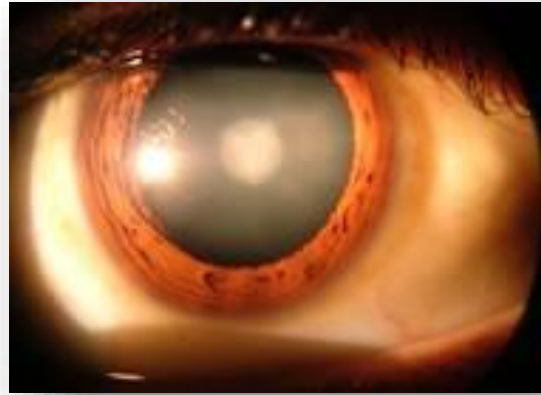
HE Bertie Ahern, Co-Chair of the InterAction Council, former Taoiseach, Prime Minister, Republic of Ireland



The Future is Reusable| Bracknell | 17th September 2019



Climate change causes illness and death directly and indirectly...



Global changes impacting on health

The changing environment

Deadly heat wave holds firm in Europe

Temperatures throughout Europe continued above normal, as France reported as many as 3,000 deaths due to the heat.

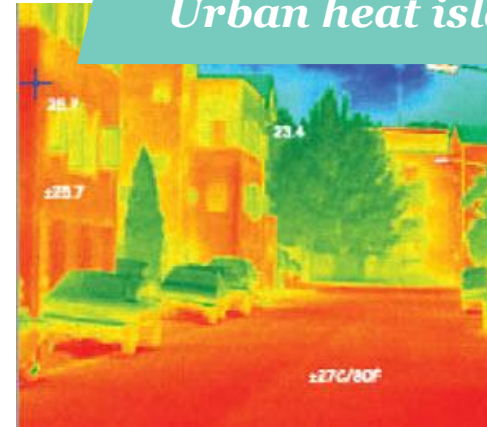
Difference from normal temperatures Aug. 3 to Aug. 9, 2003



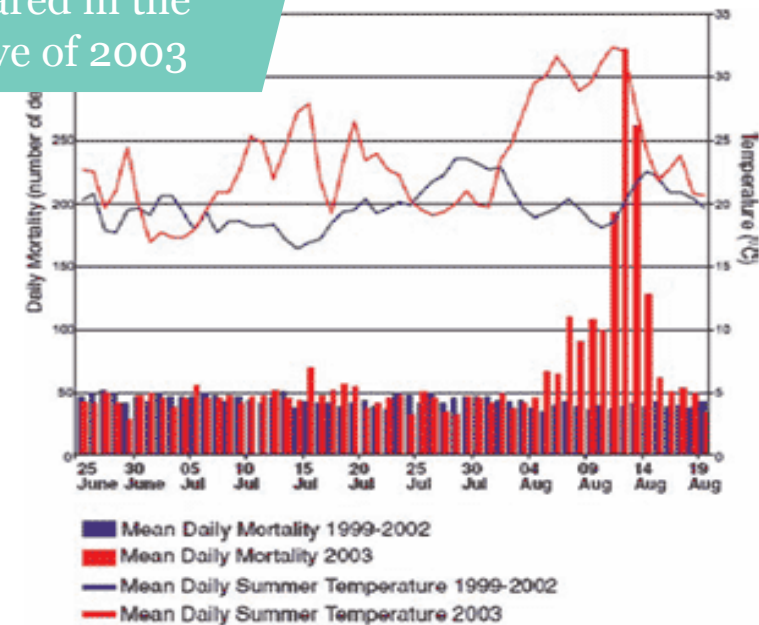
SOURCE: Climate prediction center, NOAA.

AP

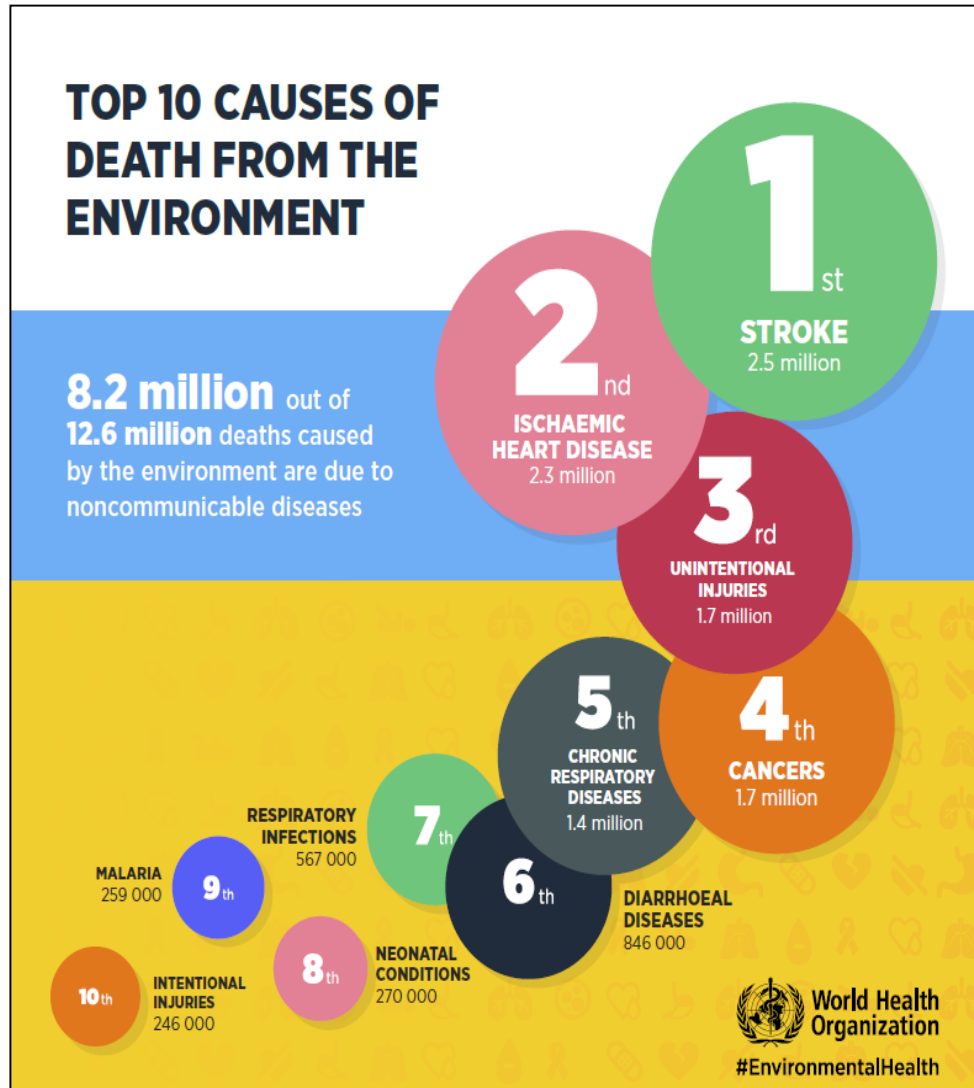
Urban heat islands



Excess deaths soared in the summer heat wave of 2003

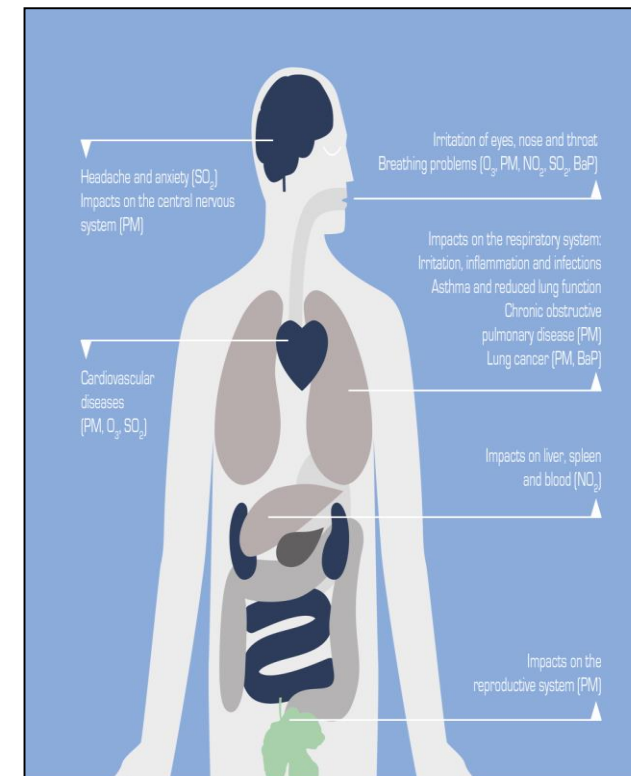


The Environment Shapes Our Health



400,000 premature deaths linked to air pollution in Europe & 7 million globally

Source: (1) EU Commission data, euractiv.com;
<http://www.who.int/mediacentre/news/releases/2014/air-pollution/en/>



HEALTH IN THE SDG ERA

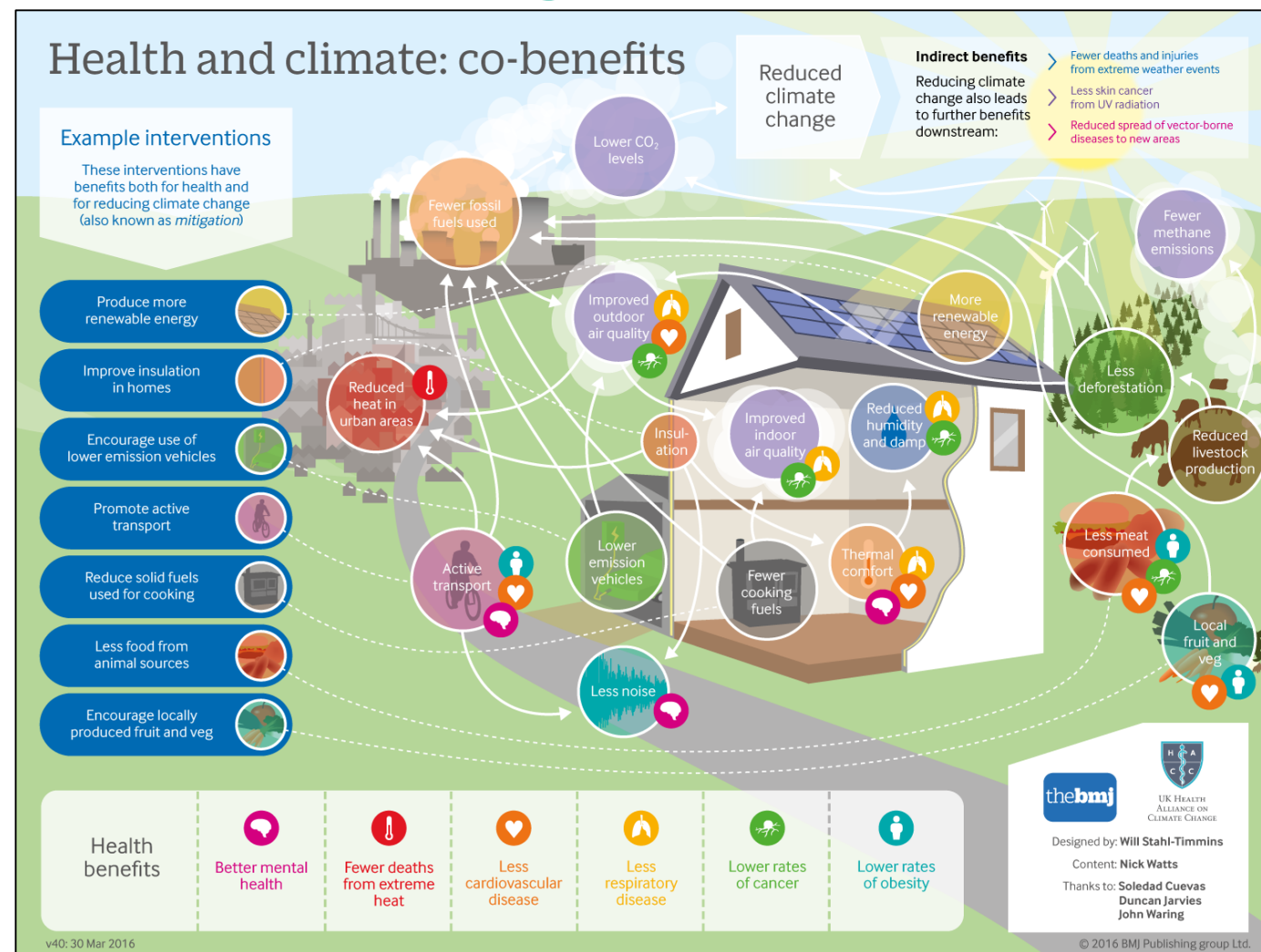
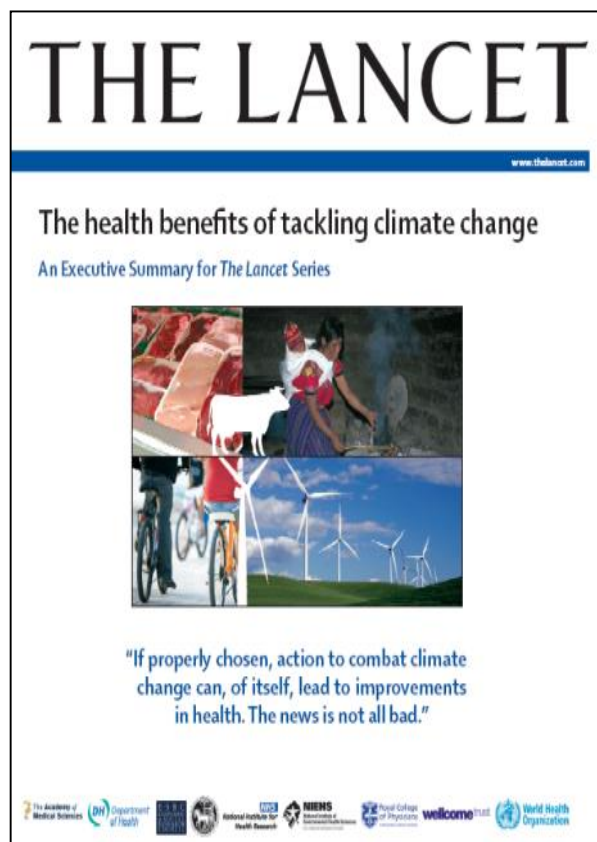


World Health Organization

WWW.WHO.INT/SDGS



Co-benefits of healthy behaviours through action across the economy



Health: co-benefits of healthy behaviours through action across the economy

Walking & Cycling instead of driving

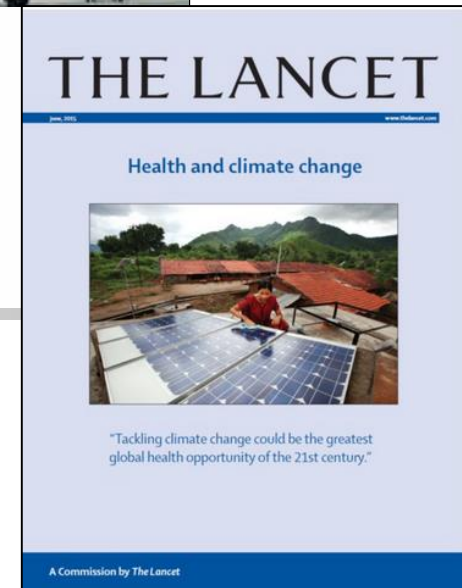
- ↓ Heart disease & Stroke 10-20%
- ↓ Breast cancer 12-13%
- ↓ Dementia 8%
- ↓ Depression 5%
- ↓ Reduce health service costs by 17 billion

Eating 30% less saturated animal fat

- ↓ Heart disease by 15%
- ↓ Obesity
- ↓ Diet-related cancers

Low carbon saves money

Connecting to nature is good for health

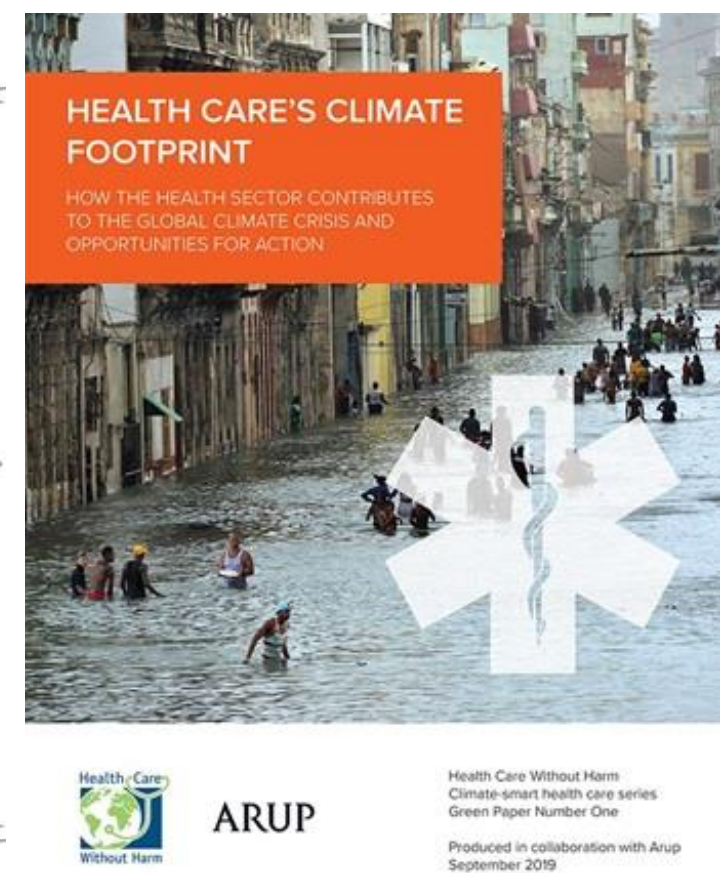
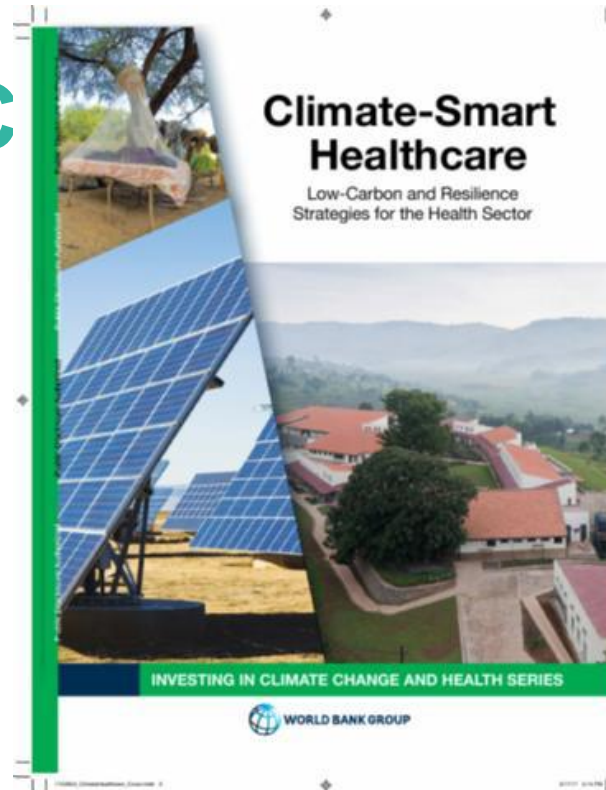


Health Care Sector: Impact and Opportunities for Action

Impact of Global Health C

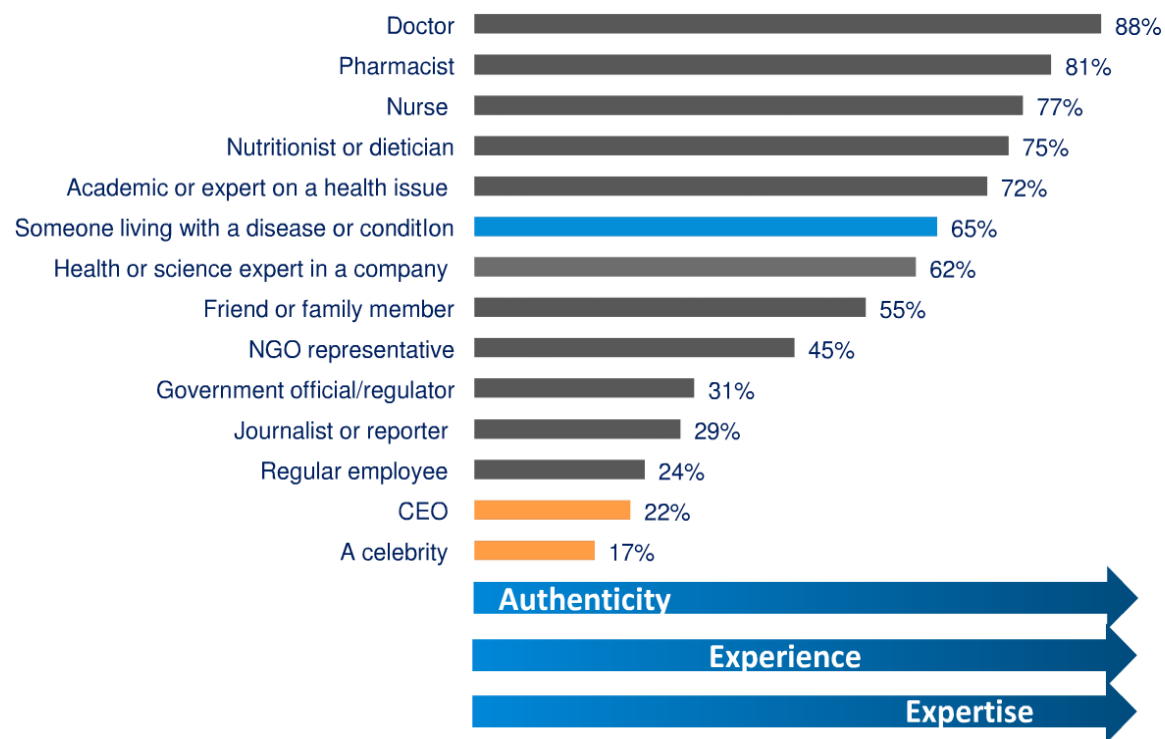
Global Impacts:

- Healthcare sector's footprint is equivalent to 4.4% of global CO₂ net emissions (2 GT of CO₂ eq)
- Equivalent to 514 coal-fired power plants or the 5th largest planetary emitter
- Linked to spending: top three emitters United States, China and EU (56% of global footprint)
- Energy (12%), transport (17%), products and services and waste (71% supply chain)
- Focus on low carbon, resilience, climate-smart development investment and procurement



Health Leadership Matters.....

Expertise, experience and authenticity are required for credibility



Q106 - 119. Below is a list of people. In general if you heard health-related information from that person, how credible do you think that information would be - extremely credible, somewhat credible, neither credible nor incredible, not very credible or not credible at all? (Global) (Top 2 Box - Credible = Extremely Credible/Somewhat Credible)

*Engaging Companies:
The Sustainable Healthcare
Coalition*

Who we are

A partnership of healthcare companies and other health agencies addressing some of the most pressing sustainability issues in global healthcare.

Our purpose is to facilitate the journey towards good health and wellbeing on a finite planet, through open-minded collaboration across public and private healthcare.

Our core group draws in participation from other health system players including trade bodies, state healthcare providers, public health institutions and international agencies.



Carbon Footprint and Care Pathways

- Created by NHS Sustainable Development Unit in response to evidence that pharmaceutical products were responsible for much of the NHS's carbon footprint.
- By sharing data and expertise, the group was able to create world-first guidance on how to measure the carbon footprint of pharmaceuticals and medical devices.
- Inviting wider collaboration, the partnership went on to produce guidance on understanding the environmental impacts of whole care pathways.



CARE PATHWAYS MODULES

- GP consultation
- Patient travel
- Emergency Department visit
- Inpatient bed day
- Surgical procedure



Case studies



Baxter



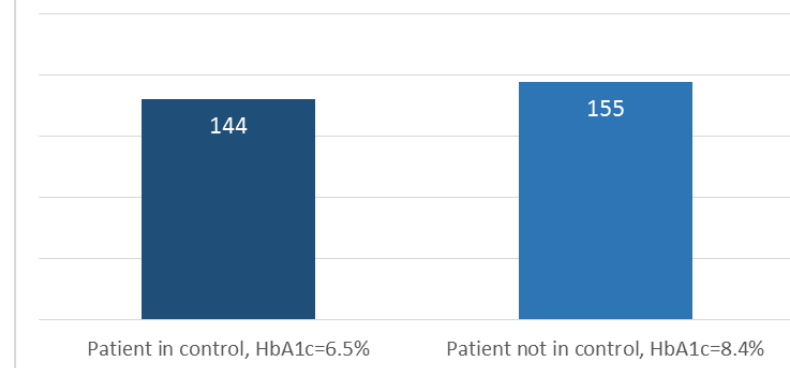
Baxter



Johnson & Johnson



GHG emissions per year of diabetes management
(kg CO₂e / year)



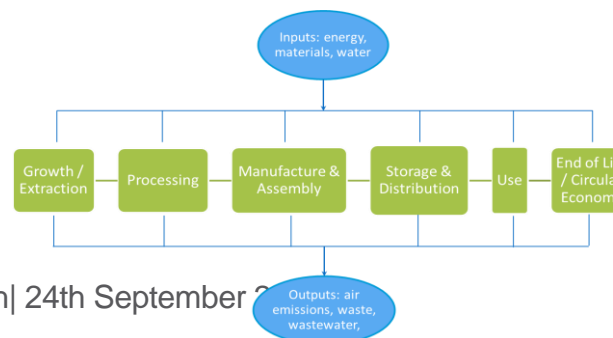
Stepping Up Action

The Sustainable Healthcare Coalition is now expanding its thinking and activity:

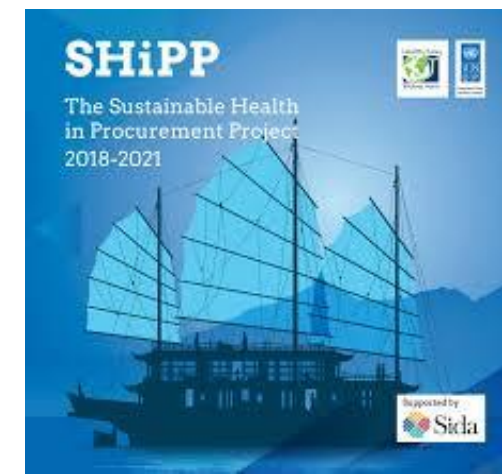
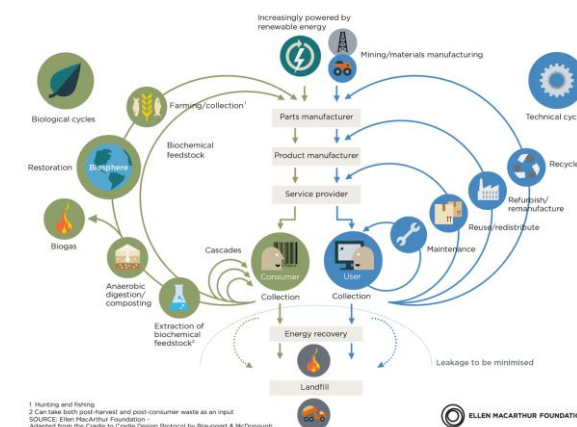
- How circular economy principles can be applied to 'circular healthcare'.
- How supply chain and procurement processes could operate for effective, efficient and sustainable healthcare systems.
- Review guidelines for impact and change and new use
- How can innovation drive change
- Opportunities to collaborate, understand barriers and opportunities and test to learn



Transitioning Health Systems to Sustainability| Edinburgh| 24th September 2020

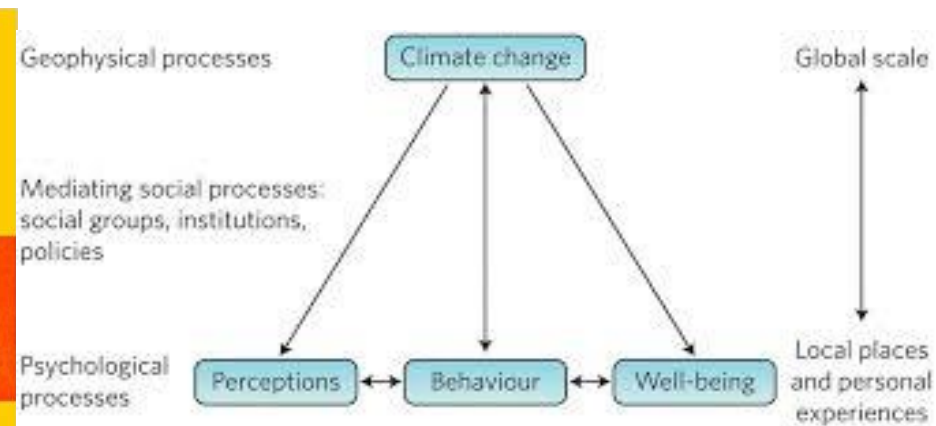
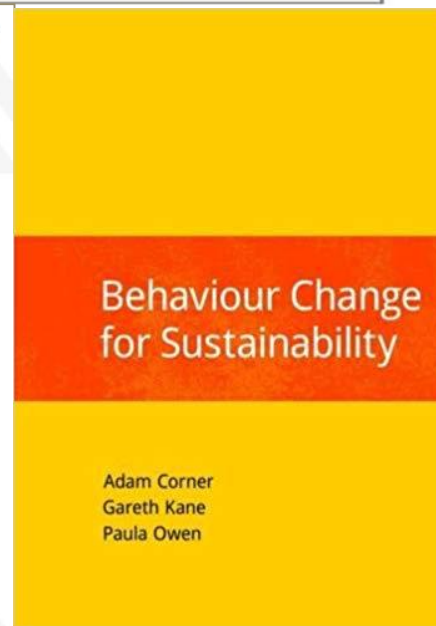
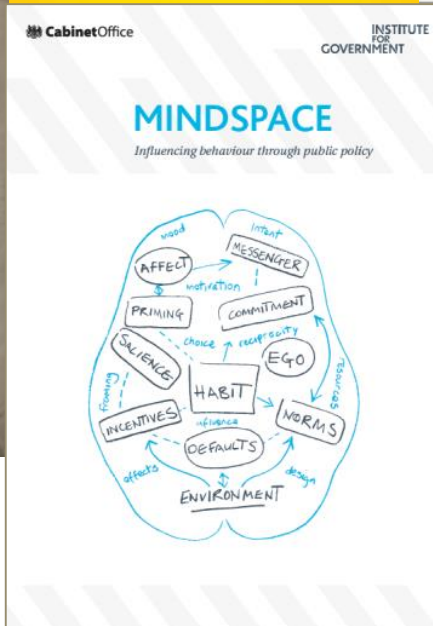
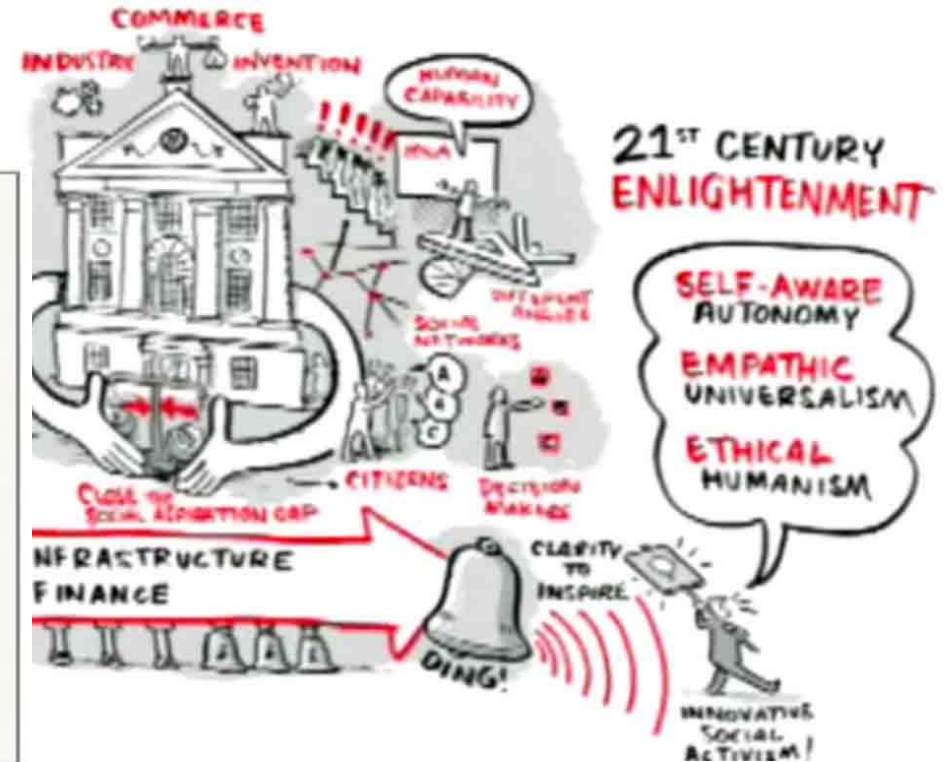
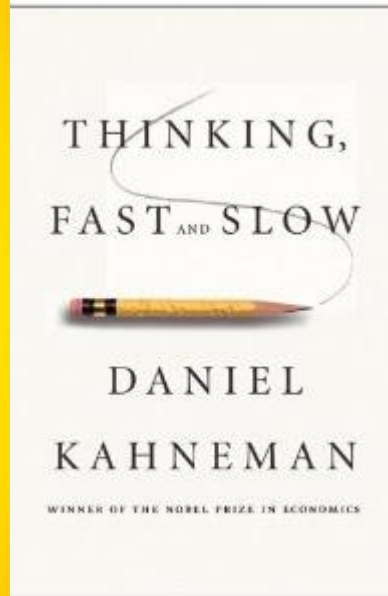
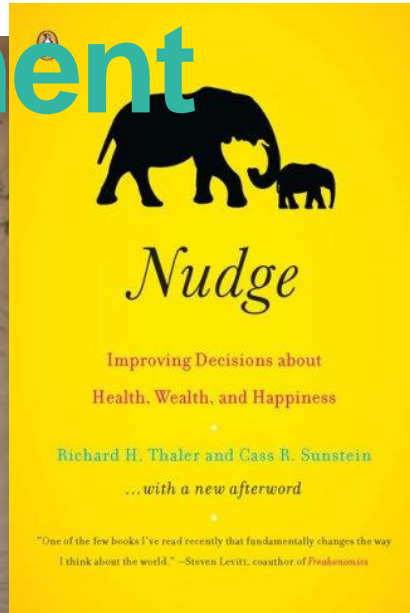


CIRCULAR ECONOMY - an industrial system that is restorative by design



Skills for transition

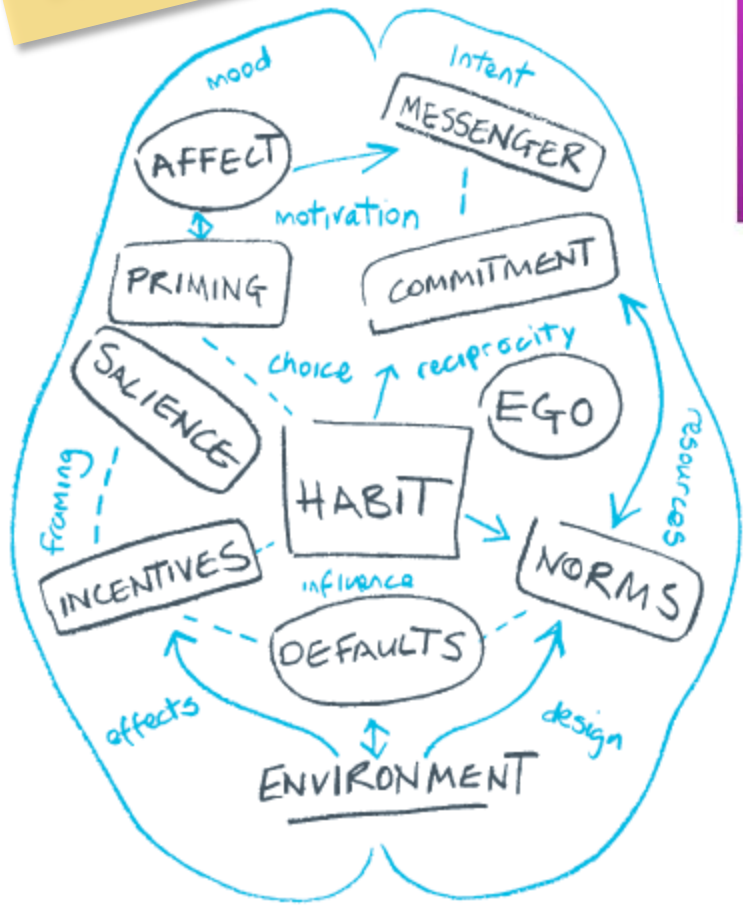
21st Century Enlightenment



Psychological research and global climate change
Clayton et al. Nature Climate Change, 5, 640-46, 2015

Developing core capabilities and solutions for transformation

Behaviour change



Human Centered DESIGN

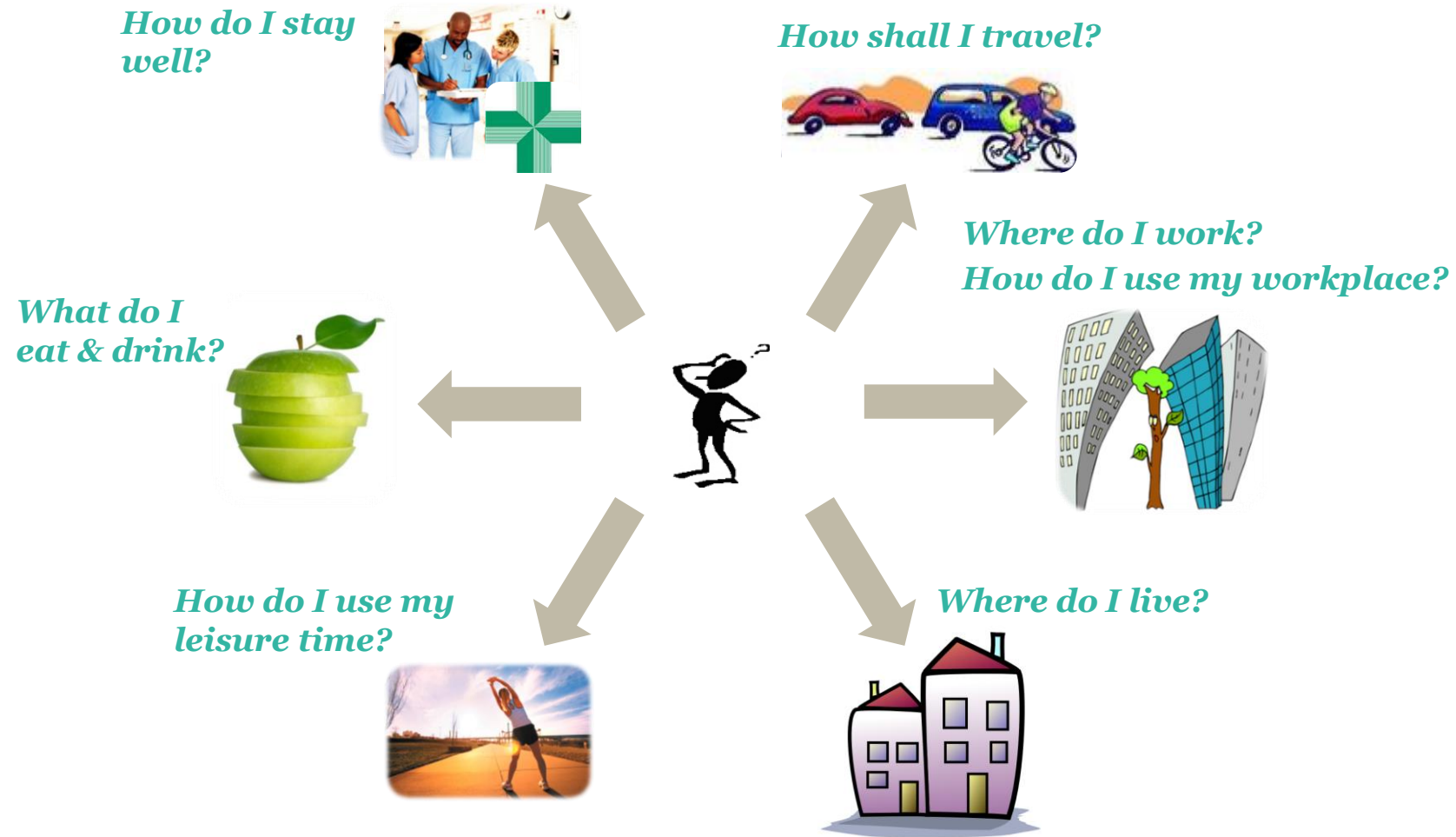
Connected Communities

Digital solutions



Health: the daily sustainability opportunities

Behaviour choice points across sectors

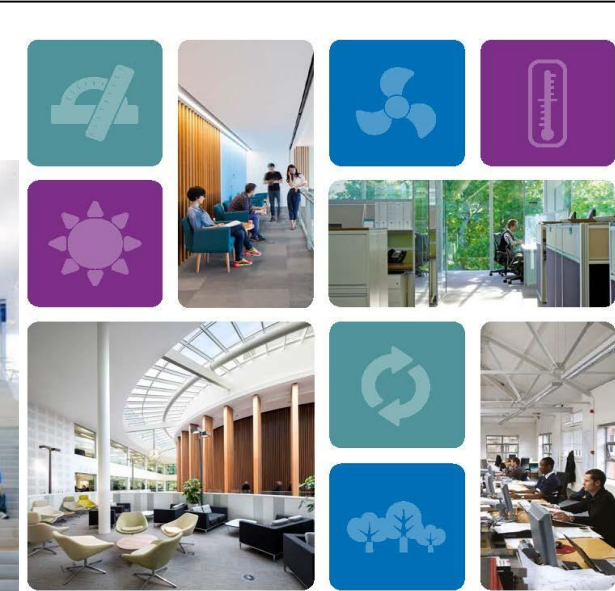
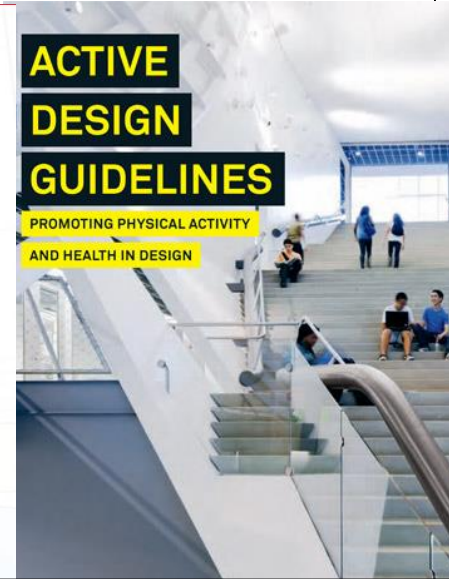
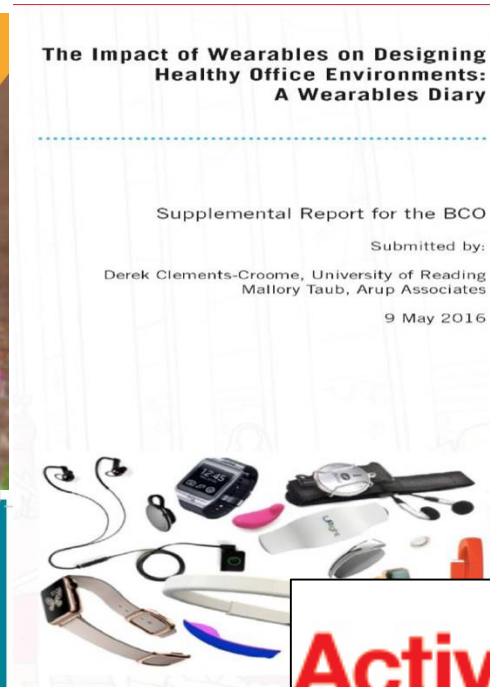


Designing in Sustainable Health....



THE ECONOMICS OF BIOPHILIA

WHY DESIGNING WITH NATURE IN MIND MAKES FINANCIAL SENSE



Health, Wellbeing & Productivity in Offices

The next chapter for green building



Building with Nature

User Guide

Transitioning Health Systems to Sustainability | Edinburgh | 24th September

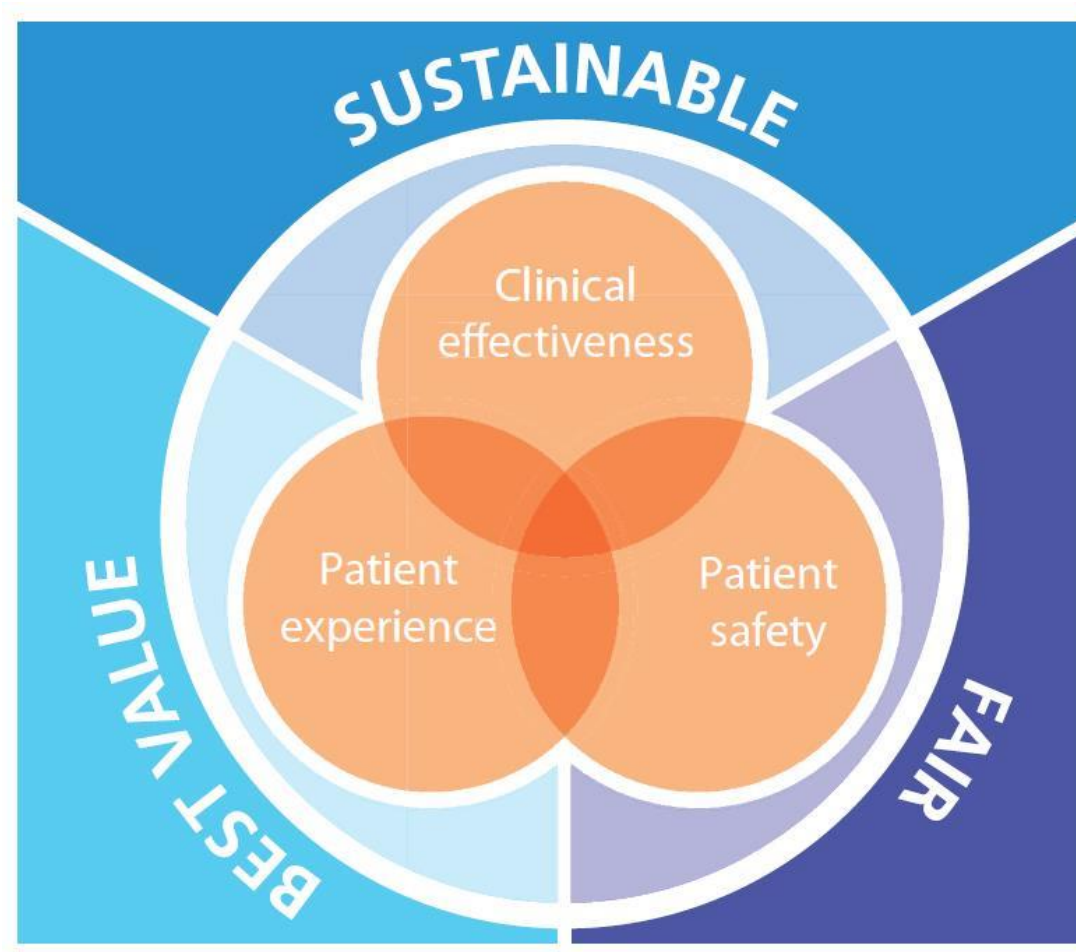
Transforming the System

A Transformed System.....

From	health care as an institution led service	To	health and social care as part of the community
From	curative and fixing medical care	To	early intervention and preventative care
From	sickness	To	health and well-being
From	professional	To	personal
From	isolated and segregated	To	integrated and in partnership
From	buildings	To	healing environments
From	decision making based on today's finances	To	an integrated value of the future which accounts for the impacts on society and nature
From	single indicators and out of date measurements	To	multiple score card information and in real time
From	sustainability as an add on	To	integration in culture, practice and training
From	waste and over use of all resources	To	a balanced use of resources where waste becomes a resource
From	nobody's business	To	everyone's business

 Sustainable Development Unit

Redefining Quality...



 Sustainable Development Unit

Together we go further...

CARE
WITHOUT
CARBON



At Success Partnership we are daring to do things differently for a better working life and a greener NHS. We Dare to Care.
Take a dare online at www.carewithoutcarbon.org



operation
Turn off - Lights out - Close doors
TLC



Choose
to
Reuse



SUSTAINABILITY
ACTION

Our NHS Our People Our Planet

Together we can create
a better NHS Scotland

Get involved
Visit www.nhsscotland.net/sustainability-action



Seven Steps to
Sustainable Healthcare



Swastheering



Buildings



Journeys



Procurement



Culture



Wellbeing



Future

MIXED RECYCLING
PLEASE

STILL NOT SURE?
CHECK OUT THE POSTERS
ABOVE THE BINS

Our NHS Our People Our Planet



Transitioning Health Systems to Sustainability | Edinburgh | 24th September 2019



Thank you!

Dr Fiona Adshead

Chair, Sustainable Healthcare
Coalition

Fiona.Adshead@btinternet.com
+44 (0)7850 515 759



A Health and Sustainability Journey...