

Vaccination Transformation Programme

NHS GGC Progress & Plans

Scott Hanley

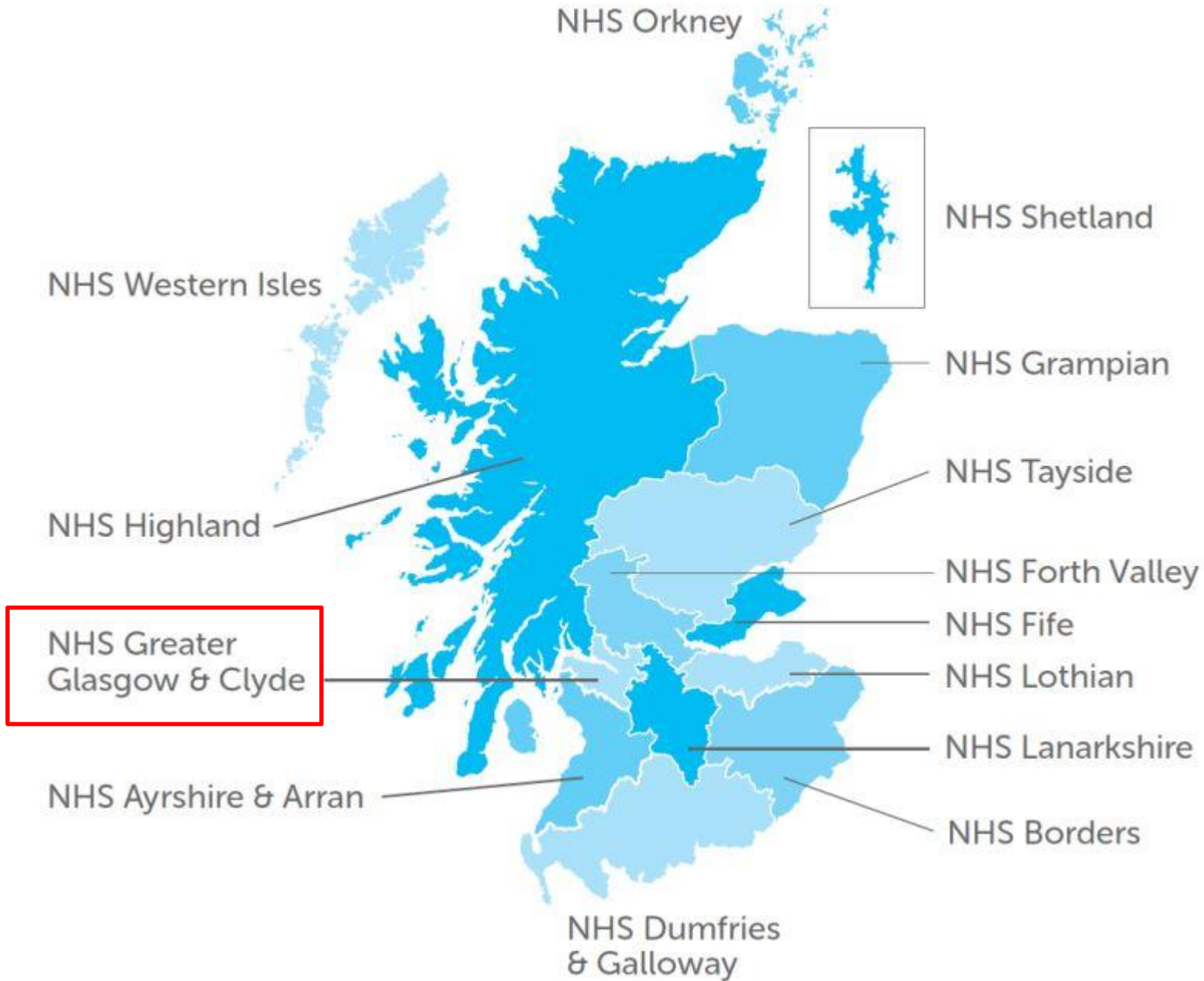
Vaccination Programme Manager (interim)

NHS Greater Glasgow & Clyde

Thursday 28th March 2019

Delivering better health

www.nhsggc.org.uk

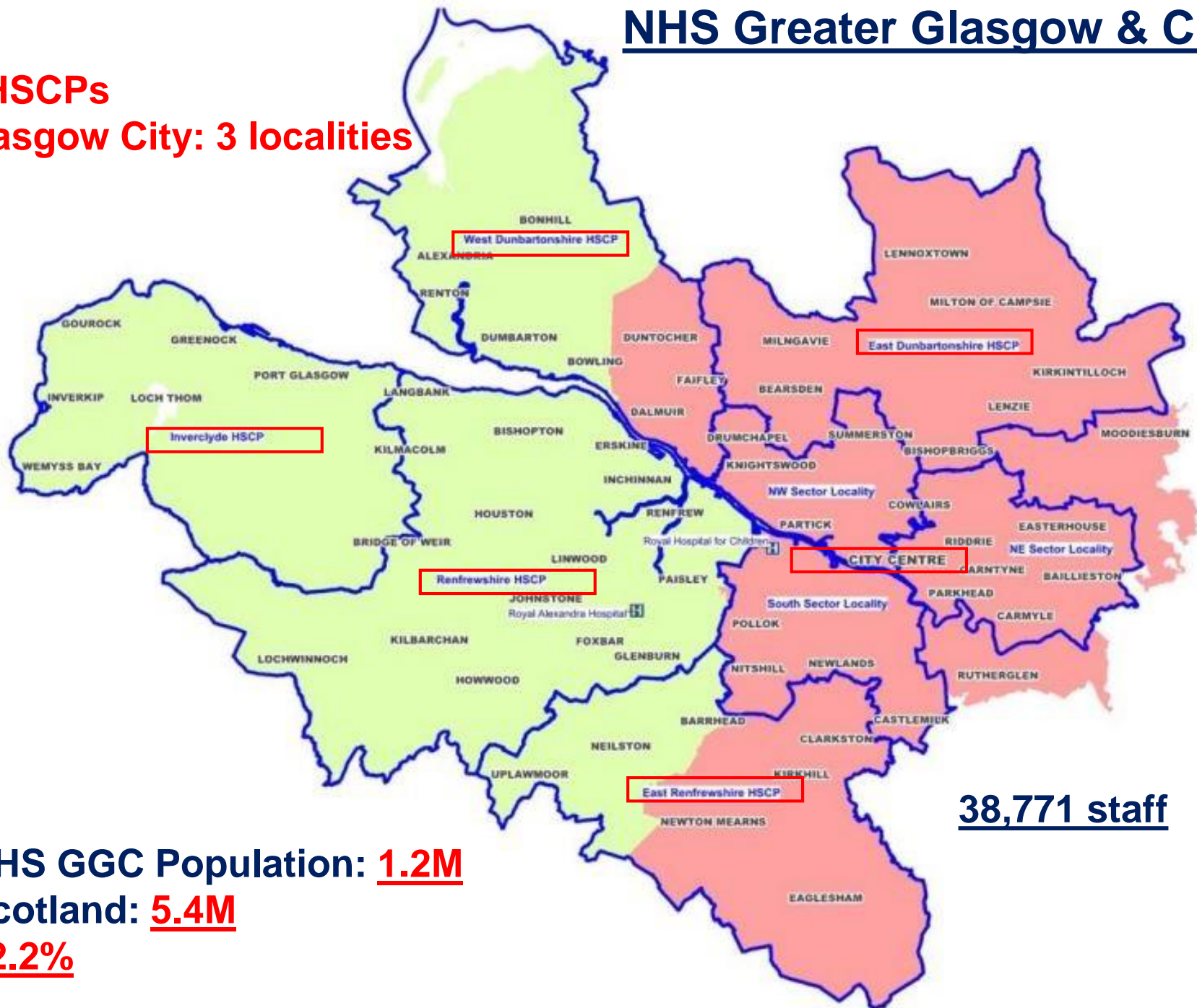


Delivering better health

www.nhsggc.org.uk

NHS Greater Glasgow & Clyde

6 HSCPs
Glasgow City: 3 localities



38,771 staff

NHS GGC Population: 1.2M

Scotland: 5.4M

22.2%

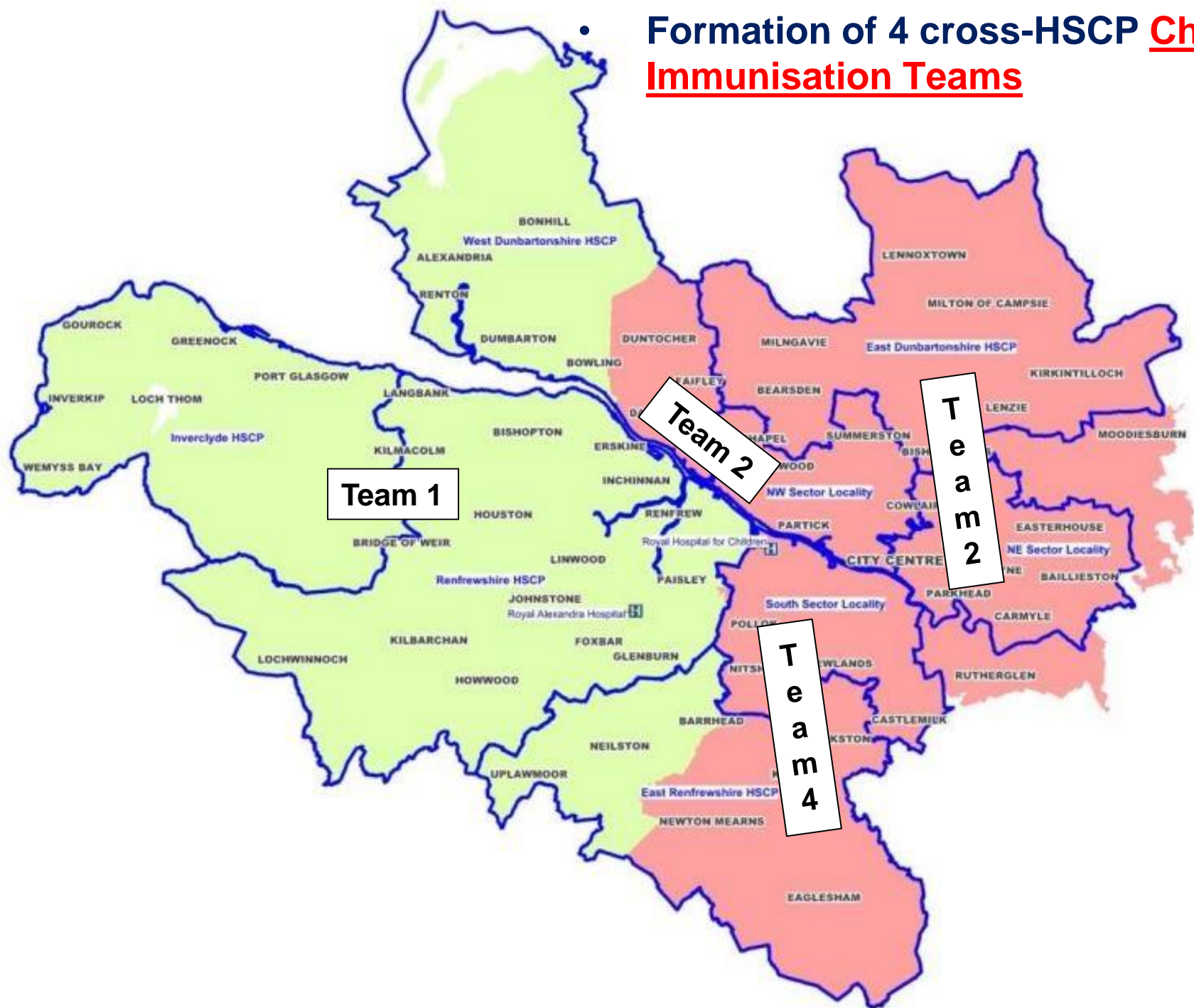
Year 1: 2018-2019: Routine Childhood Immunisation

- Other pressures led to prioritisation for year 1 i.e. Universal Care Pathway; staffing levels impacted.
- Call/Recall/Scheduling, Recording, Data Sharing and Uptake Reporting via **SIRS** as per current – easy transition with respect to IT/Data
- Migrated from **235** practices to **40** Community Clinics – mainly Health Centres
- 60% (**143**) of GP Practices are located in private premises in the local community
- 40% (**96**) located within Health Centre premises
- Centralisation can compromise service accessibility & introduce inequity

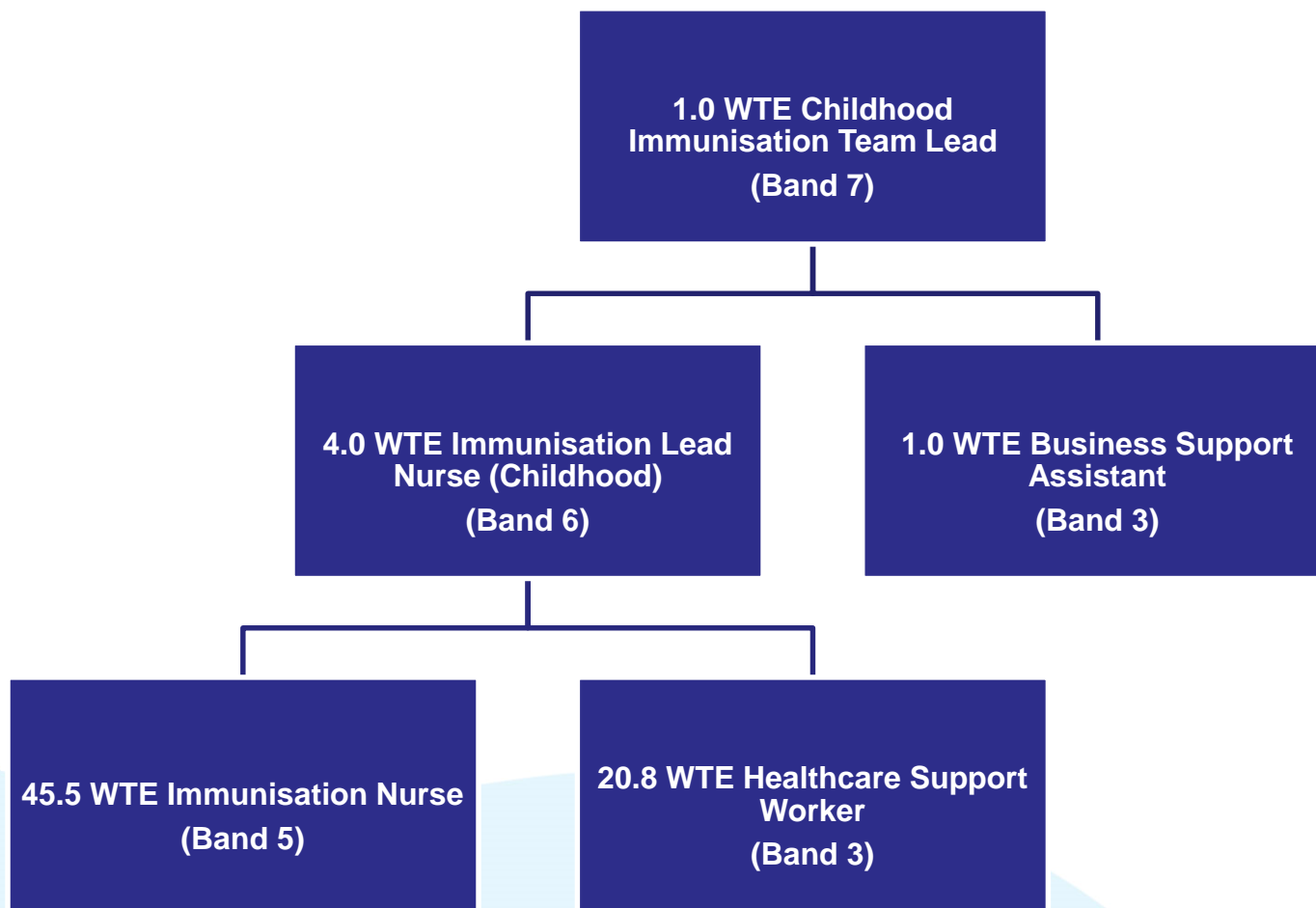
Year 1: 2018-2019: Routine Childhood Immunisation

- Analysis of Health Centre accessibility to patients attending c.60% practices outwith using Google Maps/local knowledge – journey required to nearest Health Centre.
- Immunisation cohorts (per GP practice) mapped per Health Centre
- GGC cohorts: c. 12,300 - 13,000 children per annum (depending on birth year)
- EQIA published 26/06/2018 - <https://www.nhsggc.org.uk/media/248937/eqia-routine-childhood-immunisation-clinic-delivery-redesign.pdf>

- Formation of 4 cross-HSCP Childhood Immunisation Teams



- Inspired by School Immunisation approach.



- **Based on 15 minute appointments**

Year 1: 2018-2019 Routine Childhood Immunisation

Table 1: Primary Immunisation Uptake Rates by 12 months old

Evaluation Period: 1 January to 31 December 2018

Born 1 January to 31 December 2017

Local authority ¹	Number in Cohort ²	% completed primary course by 12 months							
		6-in-1*		PCV		Rotavirus ³		MenB	
		No.	%	No.	%	No.	%	No.	%
East Dunbartonshire	1,114	1,090	97.8	1,096	98.4	1,056	94.8	1,090	97.8
East Renfrewshire	956	943	98.6	947	99.1	924	96.7	944	98.7
Glasgow City	6,810	6,474	95.1	6,516	95.7	6,096	89.5	6,392	93.9
Inverclyde	662	651	98.3	653	98.6	641	96.8	649	98.0
Renfrewshire	1,776	1,735	97.7	1,741	98.0	1,685	94.9	1,731	97.5
West Dunbartonshire	891	854	95.8	862	96.7	824	92.5	859	96.4
Scotland	53,413	51,228	95.9	51,460	96.3	49,590	92.8	50,982	95.4

Source: SIRS/ISD Scotland
Date: 11 February 2019

Year 1: 2018-2019: Routine Childhood Immunisation

Table 4: Primary and Booster Immunisation Uptake Rates by 6 years old

Born 1 January to 31 December

Evaluation Period: 1 January to 31 December 2018 2012

Local authority ¹	Number in Cohort ²	% completed primary and booster course by 6 years					
		MMR1		DTP/Pol		MMR2	
		No.	%	No.	%	No.	%
East Dunbartonshire	1,197	1,174	98.1	1,156	96.6	1,152	96.2
East Renfrewshire	1,245	1,210	97.2	1,212	97.3	1,203	96.6
Glasgow City	6,971	6,571	94.3	6,278	90.1	6,266	89.9
Inverclyde	777	757	97.4	749	96.4	744	95.8
Renfrewshire	1,965	1,907	97.0	1,863	94.8	1,855	94.4
West Dunbartonshire	1,067	1,043	97.8	1,008	94.5	1,009	94.6
Scotland	59,867	57,625	96.3	56,179	93.8	55,862	93.3

Source: SIRS/ISD Scotland

Date: 11 February 2019

Year 2: 2019 – 2020: Pre-School Flu Vaccination

- Same venues as Routine Childhood clinics.
- Immunisers mainly bank staff over 10 week period Oct – Nov with core Childhood Imms team members supervising.
- 7.5 minutes per vaccination (one vaccine only; mainly intranasal spray).
- Late afternoon/early evening weekday clinics; potential for Saturdays.
- GGC cohort = 31,500 = 2363 per week (75% uptake) over 10 weeks (Oct/Nov).
- Test-for-change planned Mon 30 Sept 2019. Participating centres to be agreed.

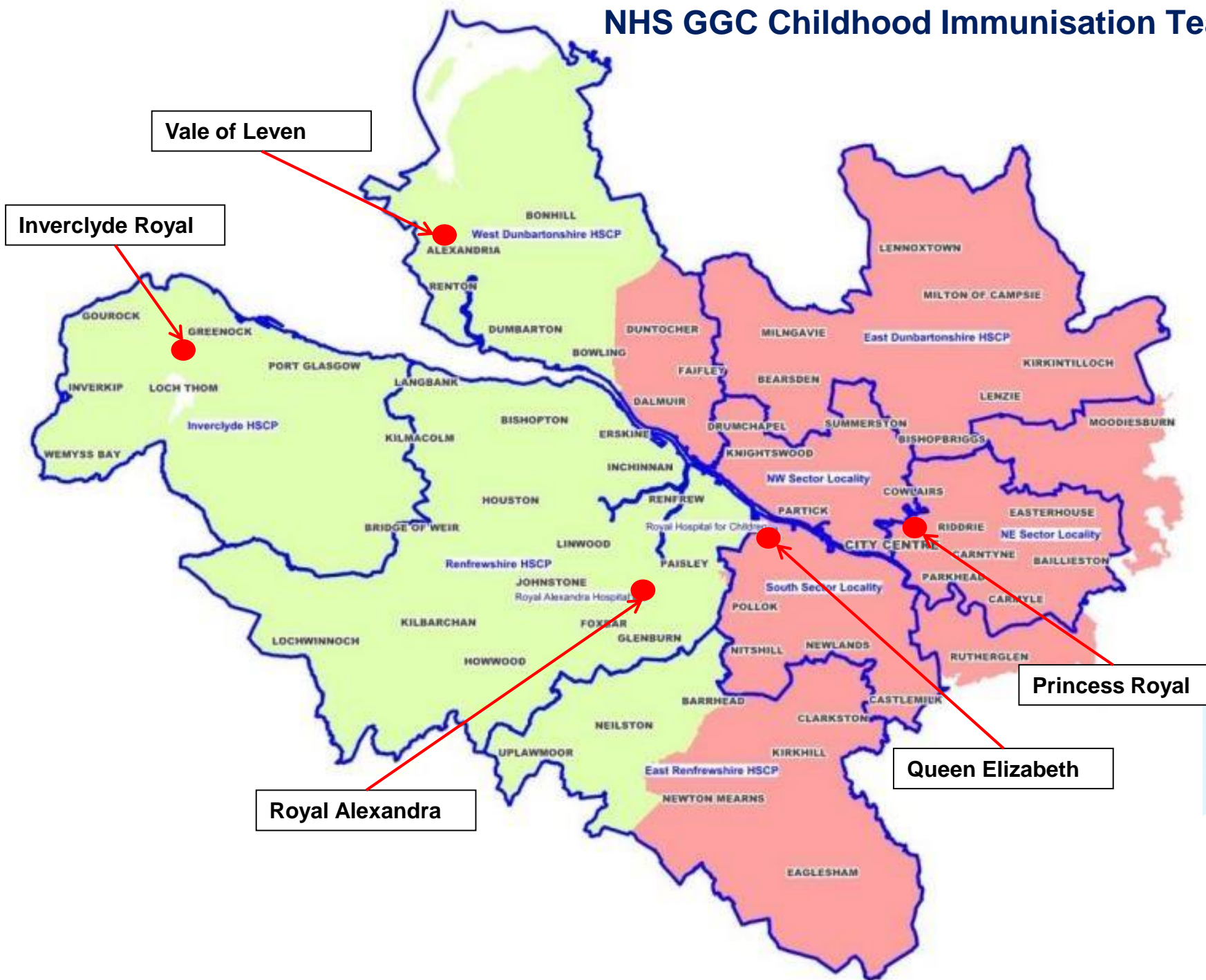
Year 2: 2019 – 2020: Pre-School Flu Vaccination

- Dependency on local, contingency IT/data/processes developed, tested and 'live' **in next 6 months** to support call/recall, scheduling, immunisation recording, data-sharing (with GPs) and national uptake reporting.
- Dependency on GPs identifying and sharing data for those infants 6 months to under 2 years 'At Risk' by a secure and robust process.
- Uptake currently **54%** in NHS GGC but **75%** for primary school programme. Opportunity to improve/align.

Year 2: 2019 – 2020: Pregnant Women

- **Delivered via Women & Children's Services/Midwifery**
- **Offered at:**
 - **12 week booking (flu)**
 - **20 week scan (pertussis and flu)**
 - **Any other antenatal opportunity prior or following**
- **Venues: GGC Maternity Centres, mainly:**
 - **Princess Royal Maternity Unit, Glasgow Royal Infirmary**
 - **Queen Elizabeth University Hospital**
 - **Royal Alexandra Hospital**

NHS GGC Childhood Immunisation Teams



Year 2: 2019 – 2020: Pregnant Women

- **Centralisation, however, vast majority of pregnant women pass through service via maternity centres at least for 12-week booking, as well as 20-week scan.**
- **Cohorts:**
 - **Princess Royal Maternity: 6000**
 - **Queen Elizabeth: 7000**
 - **Royal Alexandra: 3700**
 - **GGC: 16,700**
- **Cross-Health Board Service Provision**
 - **NHS Lanarkshire: 2023**
 - **NHS Highland: 566**
 - **NHS A&A: 96**
 - **NHS FV: 65**
 - **NHS Western Isles: 35**

Year 2: 2019 – 2020: Pregnant Women

- **EQIA to be conducted**
- **Uptake currently:**
 - **Flu ‘not at risk’: 54% (of 9335)**
 - **Flu ‘at risk’: 64% (of 820)**
 - **Pertussis: 67% (of 8304)**

Opportunity to improve.

Year 2: 2019 – 2020: Pregnant Women

- Immunisers will be **3 x Band 4 Maternity Care Assistants**: end-to-end vaccination service coordination
- Service test-for-change from **Mon 30 Sep 2019**
- Identification via self-referral of women into service and call via TrakCare appointment letter for booking/scan/antenatal appointment.
- Data recording via BadgerNet.
- Development and testing of local contingency solution **in next 6 months** to allow recall/identification of women not yet immunised, data sharing (with GPs), and national uptake reporting.

Year 3: 2020 – 2021: Adult Immunisations

- **370,000** Under 65 'At Risk' and 65 and Over Cohort 100%
- At 75% uptake = **27,750 per week over 10 weeks** (Oct/Nov)
- **Challenge:** cohort size and accessibility of service.
- 1. Formation of HSCP Adult/Older People's Services Adult Immunisation teams (as per Childhood and Schools).
- 2. Community Pharmacy:
 - Mop-up (following 2 appointments offered; show call letter)
 - Opportunistic immunisation (on presentation at pharmacy)

Year 3: 2020 – 2021: Adult Immunisations

- **‘Best of both’: partially centralised, large clinics + geographically dispersed service model. Partnership approach will share challenge of huge flu cohort size and optimise accessibility.**
- **All adult vaccines: Flu, Pneumococcal, Shingles, Travel. HSCP Clinic, Housebound Service, and Community Pharmacy.**
 - **Will require gap analysis of HSCP Adult/Older People’s Services staffing resource (as per the Childhood programme) to create teams.**
 - **Will require Item of Service pricing negotiation with Community Pharmacy sector.**

Year 3: 2020 – 2021: Adult Immunisations

- **Test-for-change planned Oct 2020.**
- **Dependency on local, contingency IT/data/processes developed, tested and 'live' to:**
 - **Identify those under 65 and 'At Risk'**
 - **Provide relevant clinical data e.g. contraindications for Shingles**
 - **Call/Recall/Schedule vaccinations. Alternative – 'drop in' clinics, however, unpredictable/large cohorts.**
 - **Create and record 370,000 adult immunisation records.**
 - **Share immunisation data with GP practices**
 - **Support national uptake reporting.**