

Welcome

Role of local government, local authorities and Violence Against Women Partnerships in driving the local area response to gender-based violence and learning disability

Who we all are

- Who you are
- your professional role
- What **matters** to you

EQUALLY SAFE

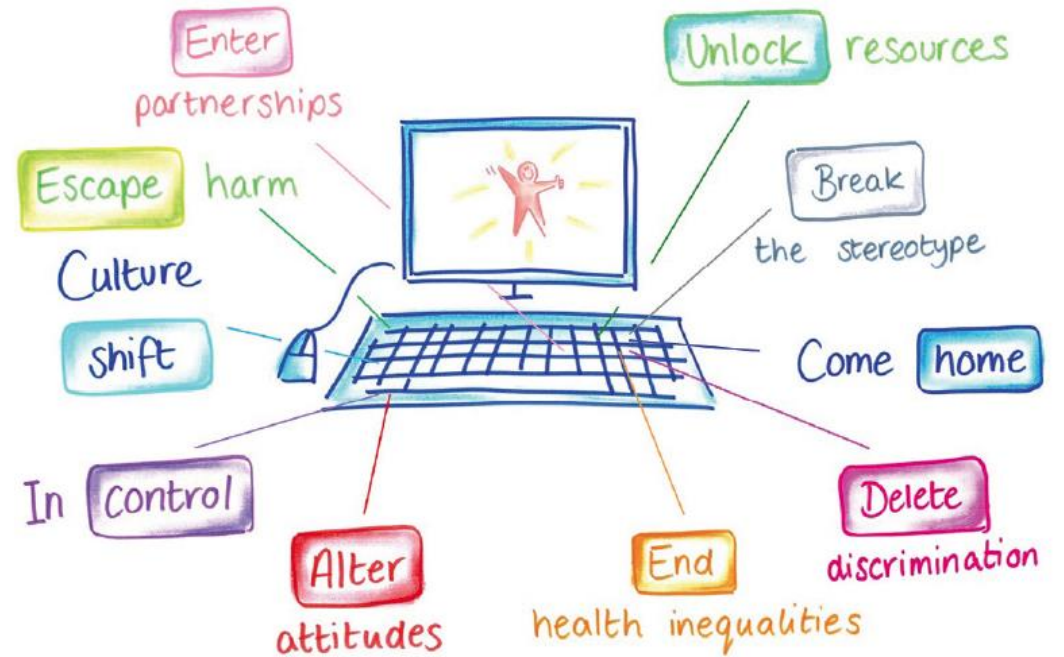
A Delivery Plan for Scotland's strategy to prevent and eradicate violence against women and girls

2017-21

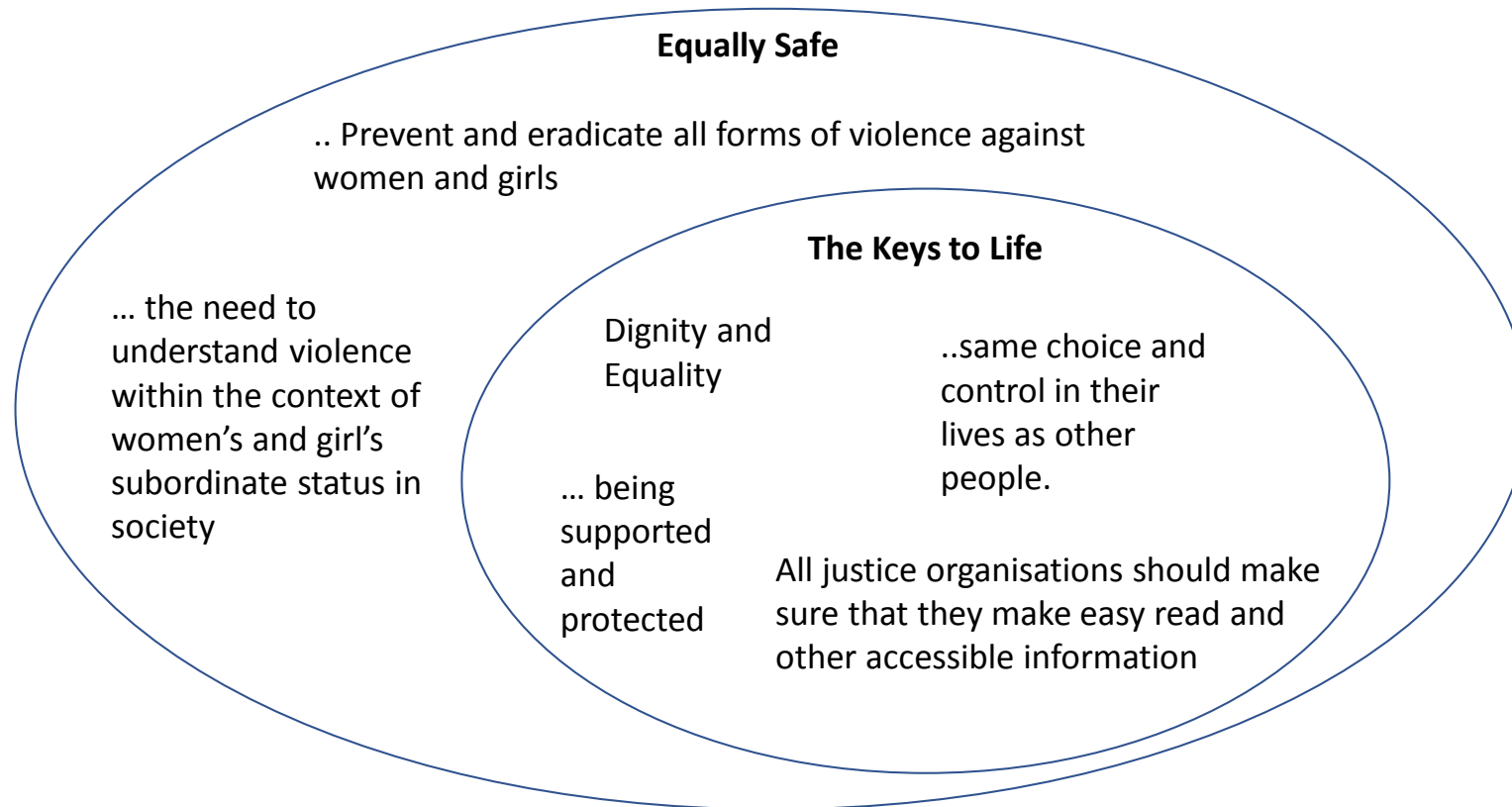


The keys to life

Unlocking Futures for People with Learning Disabilities
Implementation framework and priorities 2019-2021



The Keys to Life





Violence Against Women Partnership Guidance

KEY CONTACTS

- Katie Brown – Equally Safe Policy Coordinator COSLA
katie@cosla.gov.uk
- VAW Partnerships : - Joanna McLaughlin
Joanna.McLaughlin@improvementservice.org.uk
- Keys for Life – COSLA key contact – John Urquhart
johnu@cosla.gov.uk