

Loss and adversity in childhood: how adversity, gender and the system can interact

Nina Vaswani
Research Fellow

CYCJ Theory of Change

Children & young people flourish



Practice and policy improvements



**Practice
Development**

Advice, peer support,
consultancy support,
trying out initiatives,
guidance, toolkits,
training, supporting
change projects

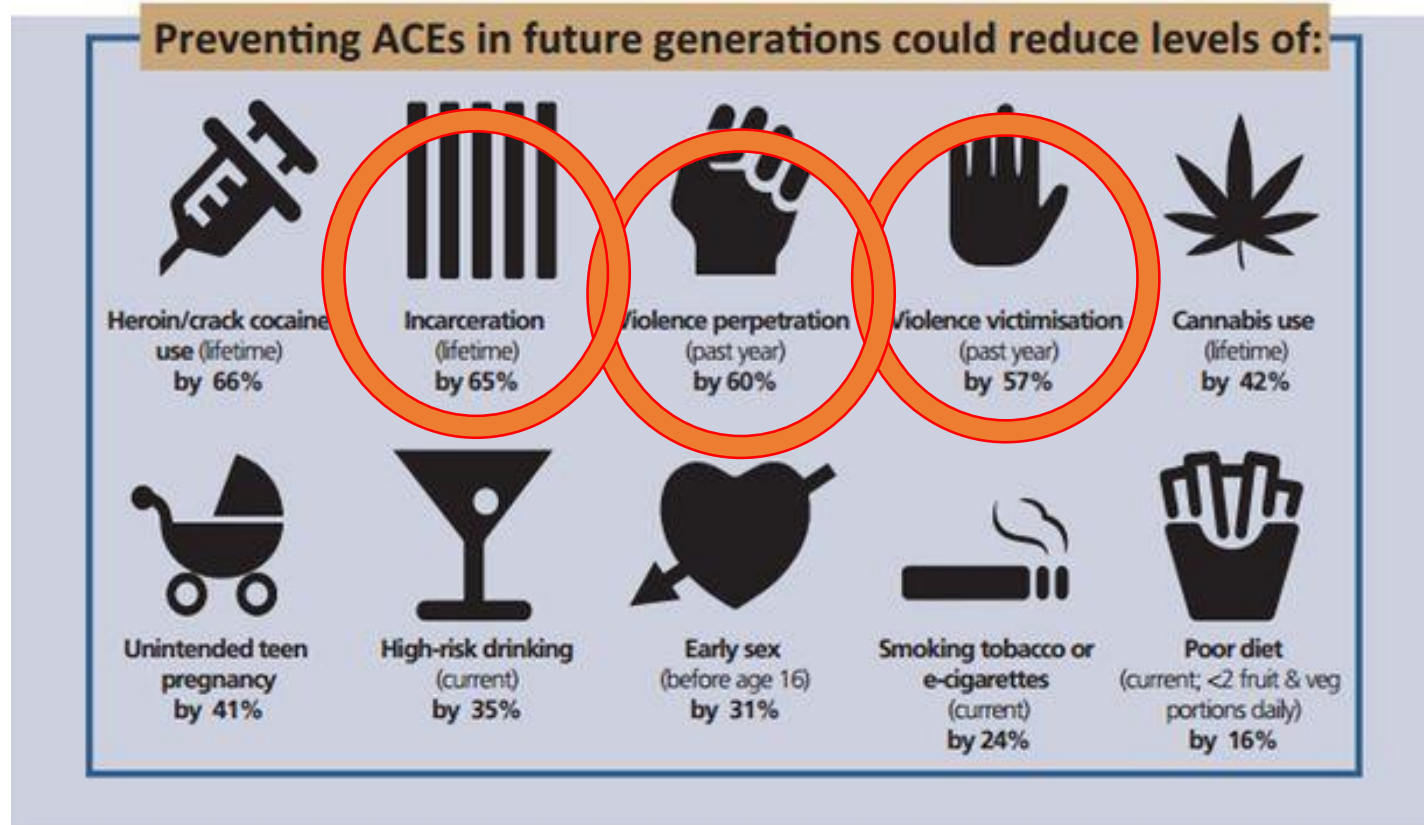
Research

New knowledge,
synthesising research
evidence, evaluating
initiatives, supporting
evidence use

**Knowledge
Exchange**

Capturing knowledge,
promoting sharing,
disseminating, improving
access & accessibility,
integrating forms of
knowledge

CYCJ's interest in ACEs

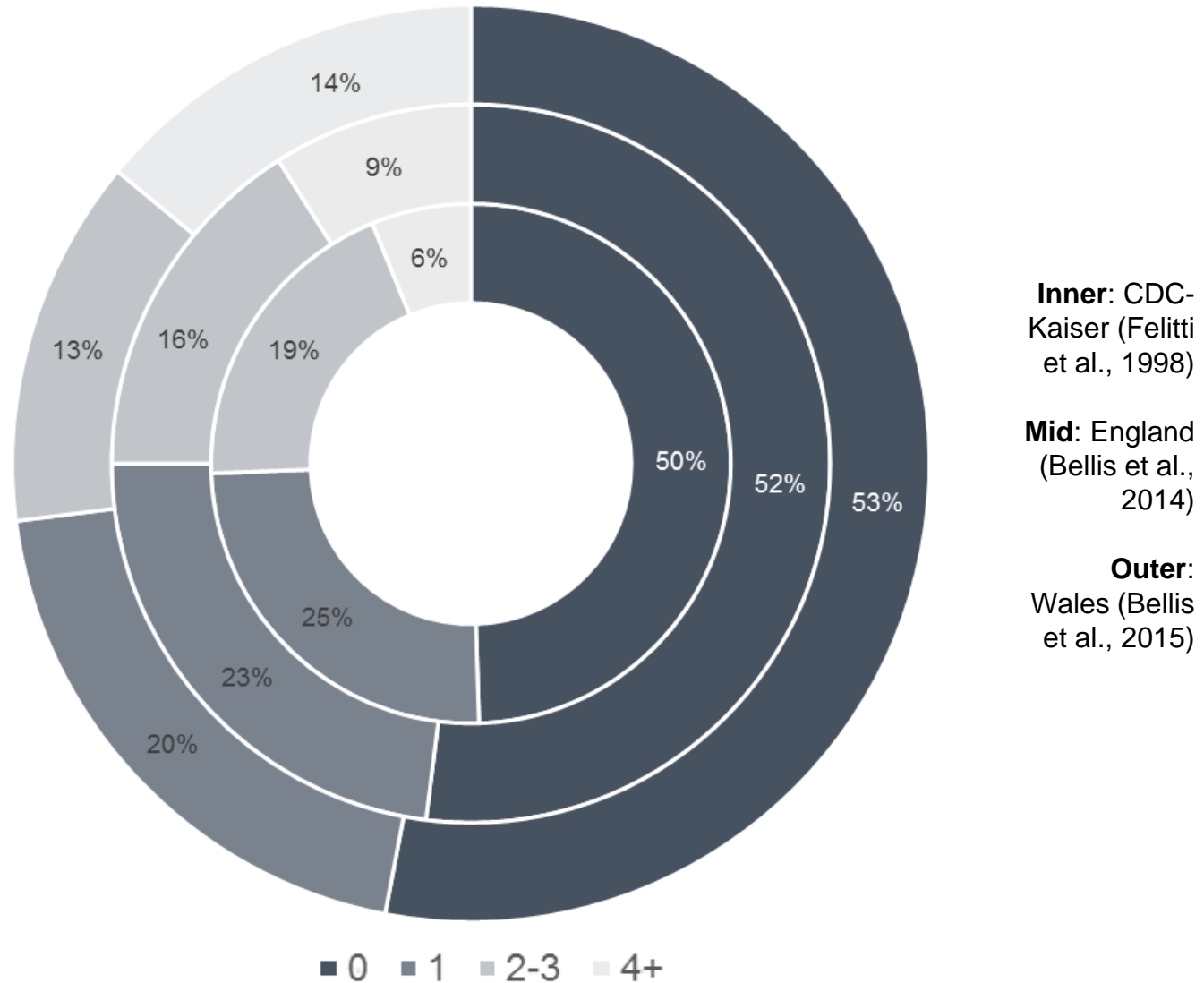


Public Health Wales, 2015

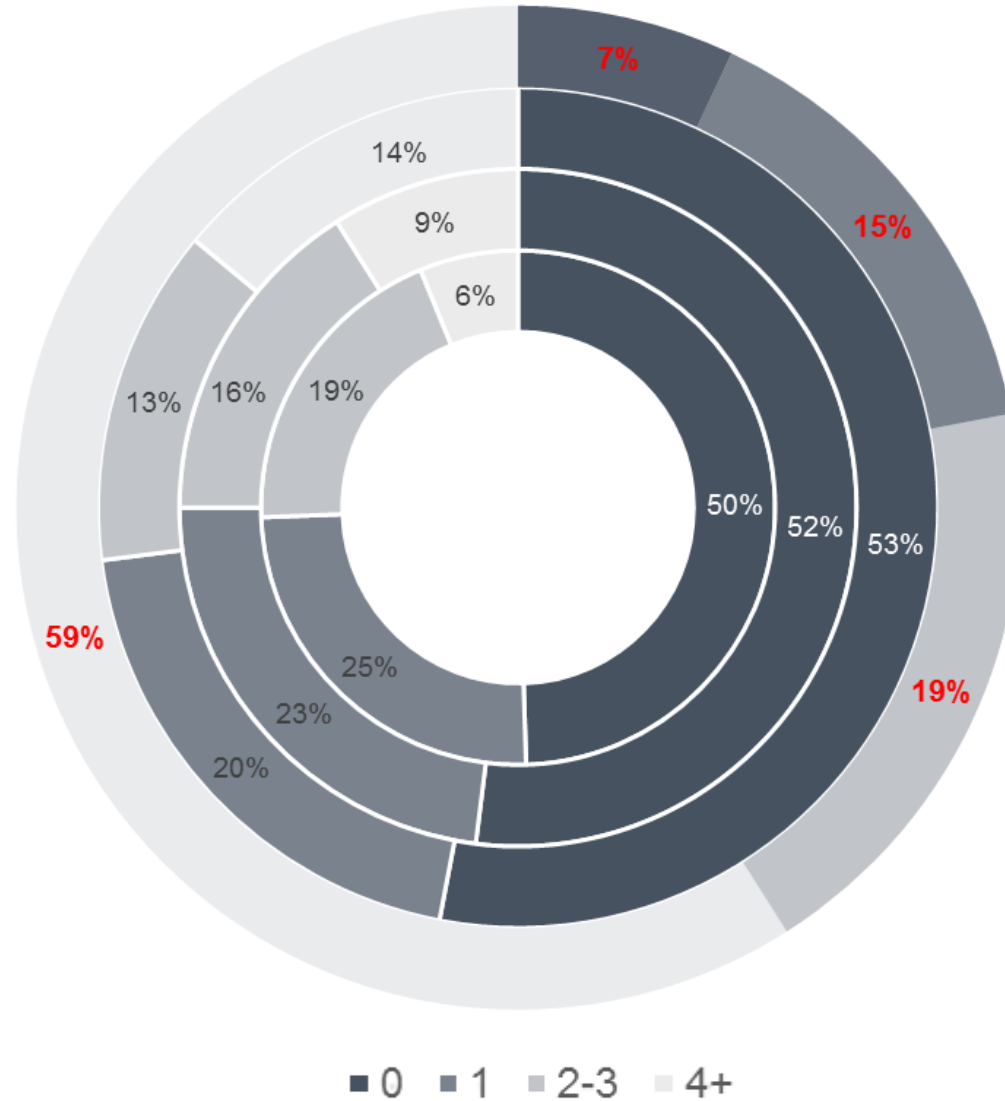
CYCJ's study

- Interventions for Vulnerable Youth (IVY)
- 130 participants
- Aged 11-18
- 111 males, 19 females
- Case file review

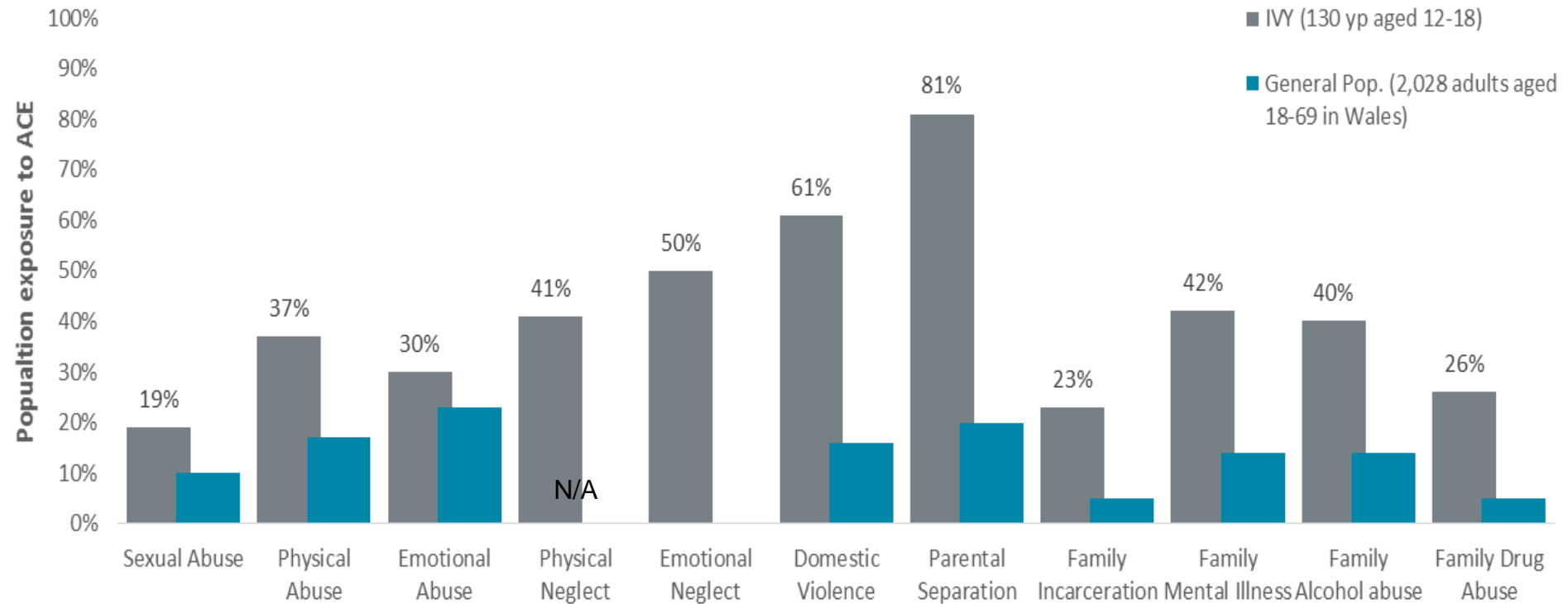
The prevalence of ACEs



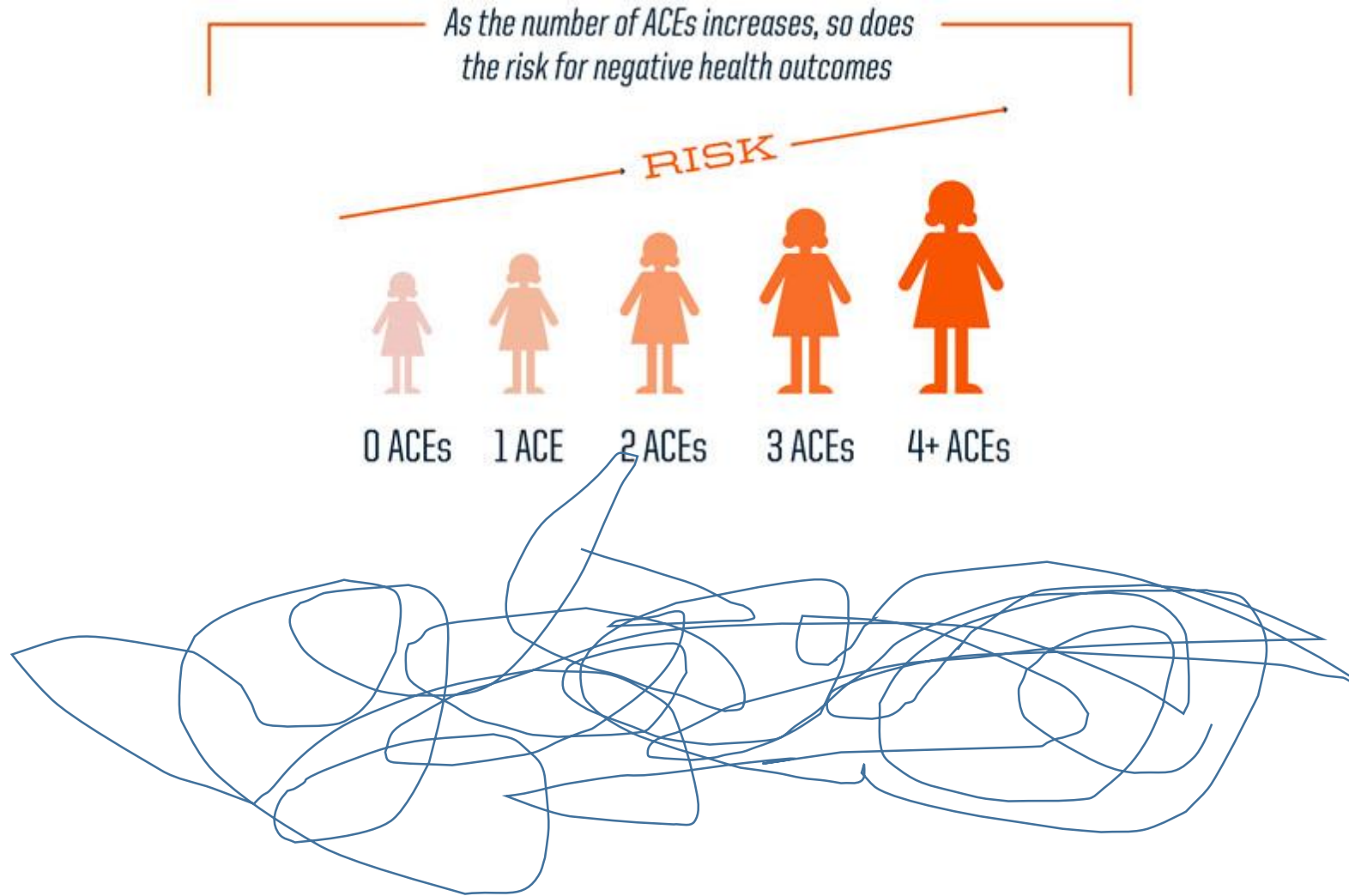
Overall ACE prevalence



Individual ACE exposure



Relationship to negative outcomes



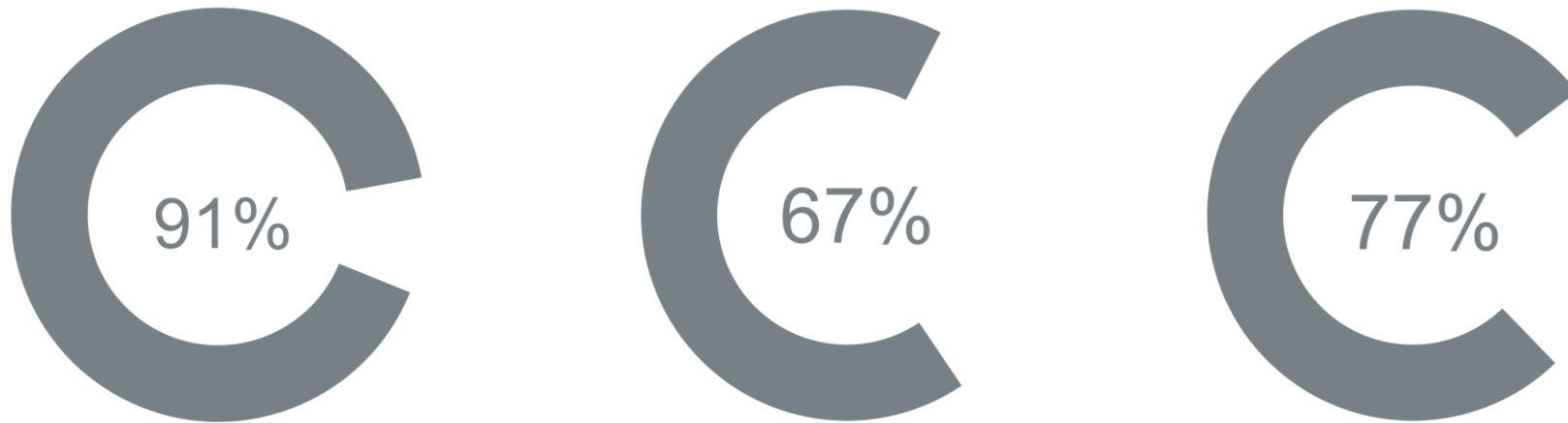
The limitations of ACEs?

- Simplistic measure?
- Affected by memory, self-disclosure etc?
- 'Missing' ACEs?
- Mediating or mitigating factors?
- Labelling and stigma?
- Pervasiveness underplays effects?

Missing ACES – Bereavement?



Missing ACES – Bereavement?

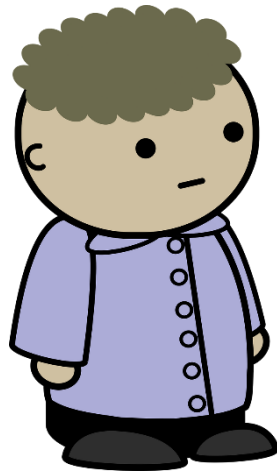


Including bereavement increased the mean ACE score from 3.92 to 4.24

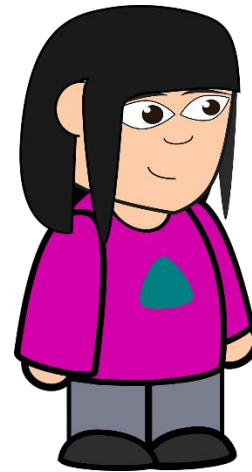
I was thinking about like 'how many more people do I have to see die? Am I gonnae grow up and see everybody die off?' know what I mean? That was the way I kinda felt, I'm only 19 and that's five people died already and I keep thinking to myself 'are the rest of them gonna die?' know what I mean then I'll grow up alone.

Gender

- Significant difference in overall ACE exposure.
- Mean ACES:



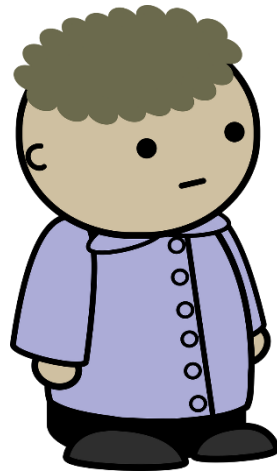
3.74



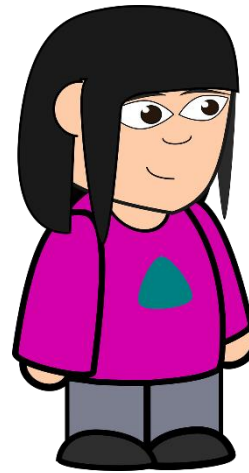
4.95

Gender

- Males had experienced more bereavement.
- ACE score no longer significantly different.



~~3.74~~
4.09



~~4.95~~
5.11

Thoughts?

- Are there gender differences in ACE exposure?
- Are there difference in the way males and females respond to ACEs?
- Are there differences in the way 'we' (society/the system) respond to males and females affected by ACEs?

I mean I've never seen my dad cry...when ma Granda died I didn't see him greet, when ma Gran died I didn't see him greet...I spose I've just always held myself back as well, rather than talk about things

...I couldn't talk to anyone, I couldn't open up...if I was angry I would just explode, start smashing things up, start fighting with people...