



Dougal and the not so magic roundabout

James Docherty

THE MAGIC ROUNDABOUT

Ring road
Cirencester
A4289



(M4)

Marlborough
Burford
Oxford



A4312



PRISON AND REHABILITATION



BETWEEN APRIL 2015 AND MARCH
2016 IN SCOTLAND:

13,735 PEOPLE WERE SENTENCED
TO PRISON

65% OF THEM WERE SENTENCED
TO 6 MONTHS OF LESS

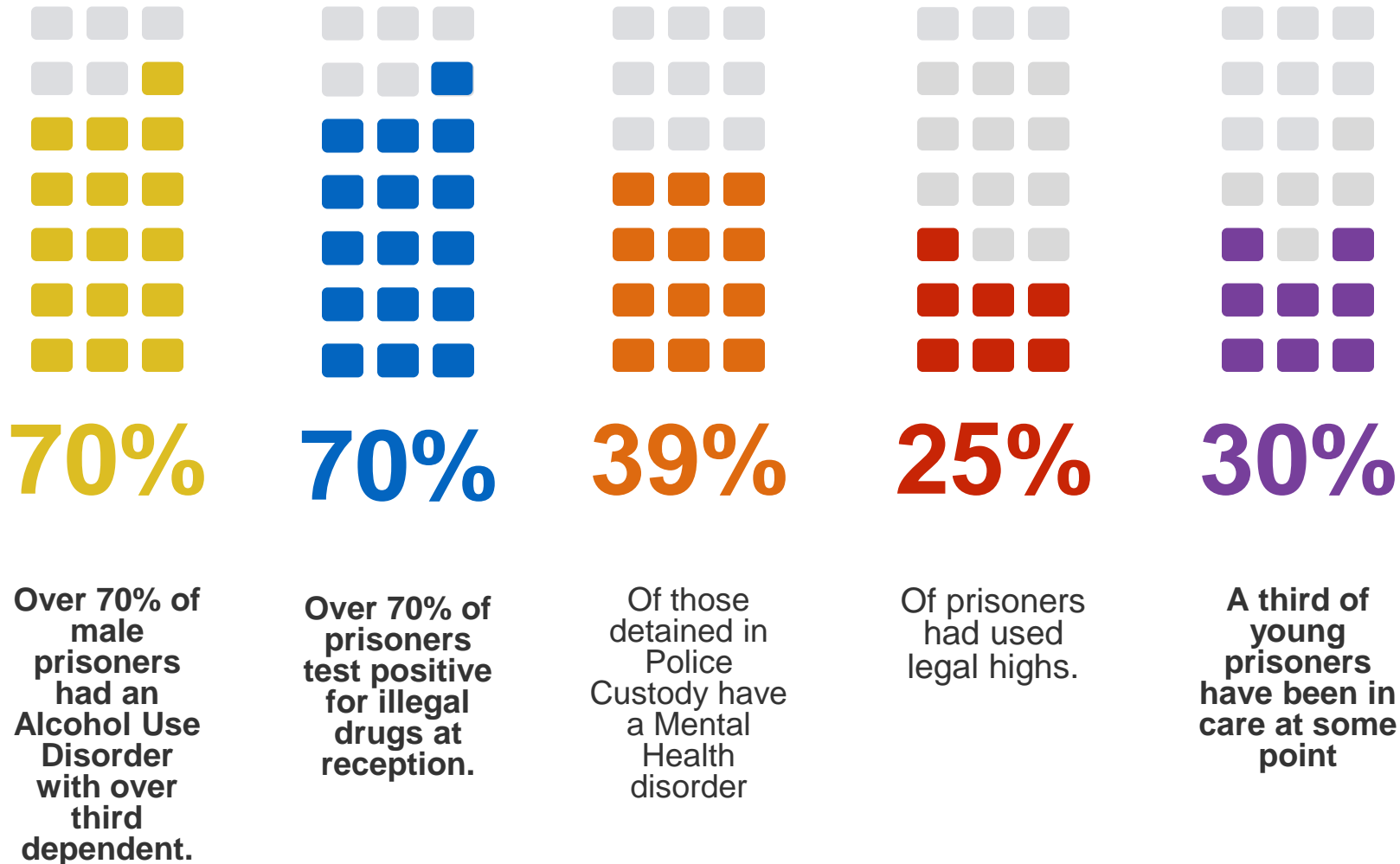
57% OF THOSE PEOPLE ARE
RECONVICTED WITHIN A YEAR

39% RETURN TO PRISON WITHIN
A YEAR



SOURCES:
SCOTTISH CRIME AND JUSTICE SURVEY (SCJS)
CRIMINAL PROCEEDINGS DATA

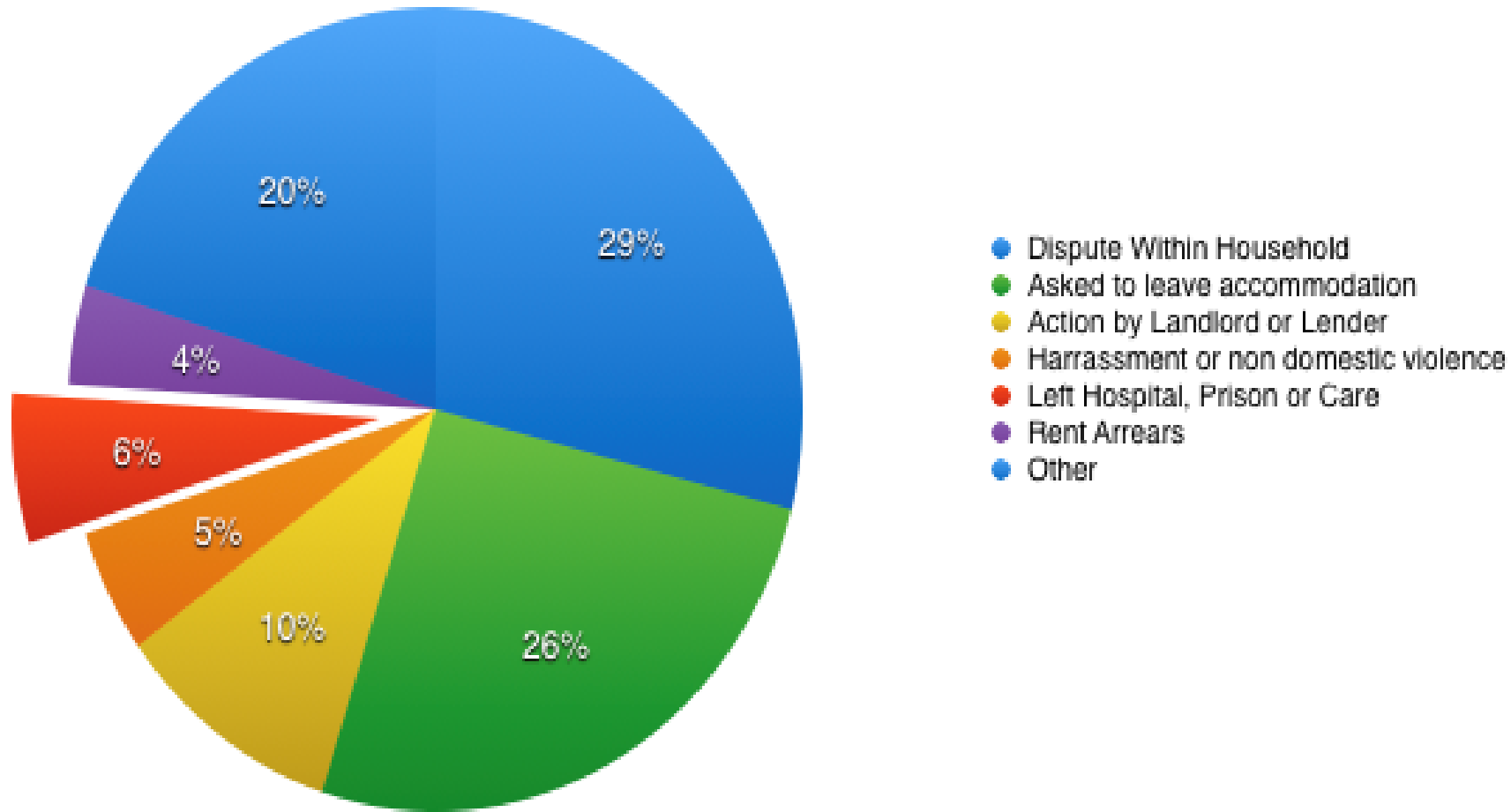
People in Contact with Justice System



Troubled Children..



Why do people become homeless?



Why do people end up in custody?

4 groups of people face particular problems when leaving prison

Remand / Those on short sentences

Women

Young people

Those who were homeless before they went in

Effective approaches to supporting prison leavers include:

proactively providing advice and information on housing needs well before release;

support after release to help sustain tenancies; partnership working with other agencies and offering practical support

Back To Christie....

Cycle of deprivation and low aspiration have been allowed to persist because preventative measures have not been prioritised.

High levels of public resource devoted to tackling 'failure demand', which could have by earlier preventative measures

Dealing with negative demand, i.e. negative outcomes retrospectively, absorbs 40% of all spending on public services.

We don't try to reduce long term failure demand. We tackle symptoms, not causes, leading to failure demand.

**‘BETWEEN THE IDEA. AND THE
REALITY. BETWEEN THE MOTION.
AND THE ACT. FALLS THE SHADOW.’**

T.S. ELLIOT
THE HOLLOW MEN.

**IT IS IN THE SHADOWS THAT THINGS FAIL – AT
DELIVERY.**